



ARCHI QUARTERLY BREAKFAST

June 6, 2018

WELCOME & INTRODUCTIONS

Tom Andrews
Mercy Care

ATLANTA TRANSFORMATION SCENARIO



FAMILY PATHWAYS



EXPAND INSURANCE



INNOVATION FUNDS



GLOBAL BUDGETING



CARE COORDINATION



HEALTHY LIFESTYLES



CAPTURE AND REINVEST



AGENDA

- **Responding to Historical and Ongoing Housing Discrimination & Segregation**
- **Solutions Panel**
- **Reflections & Action**
- **ARCHI Updates**



Responding to Historical and Ongoing Housing Discrimination & Segregation

ARCHI

June 6, 2018

Dan Immergluck

Professor

Urban Studies Institute
Georgia State University

dimmergluck@gsu.edu

twitter: @DanImmergluck



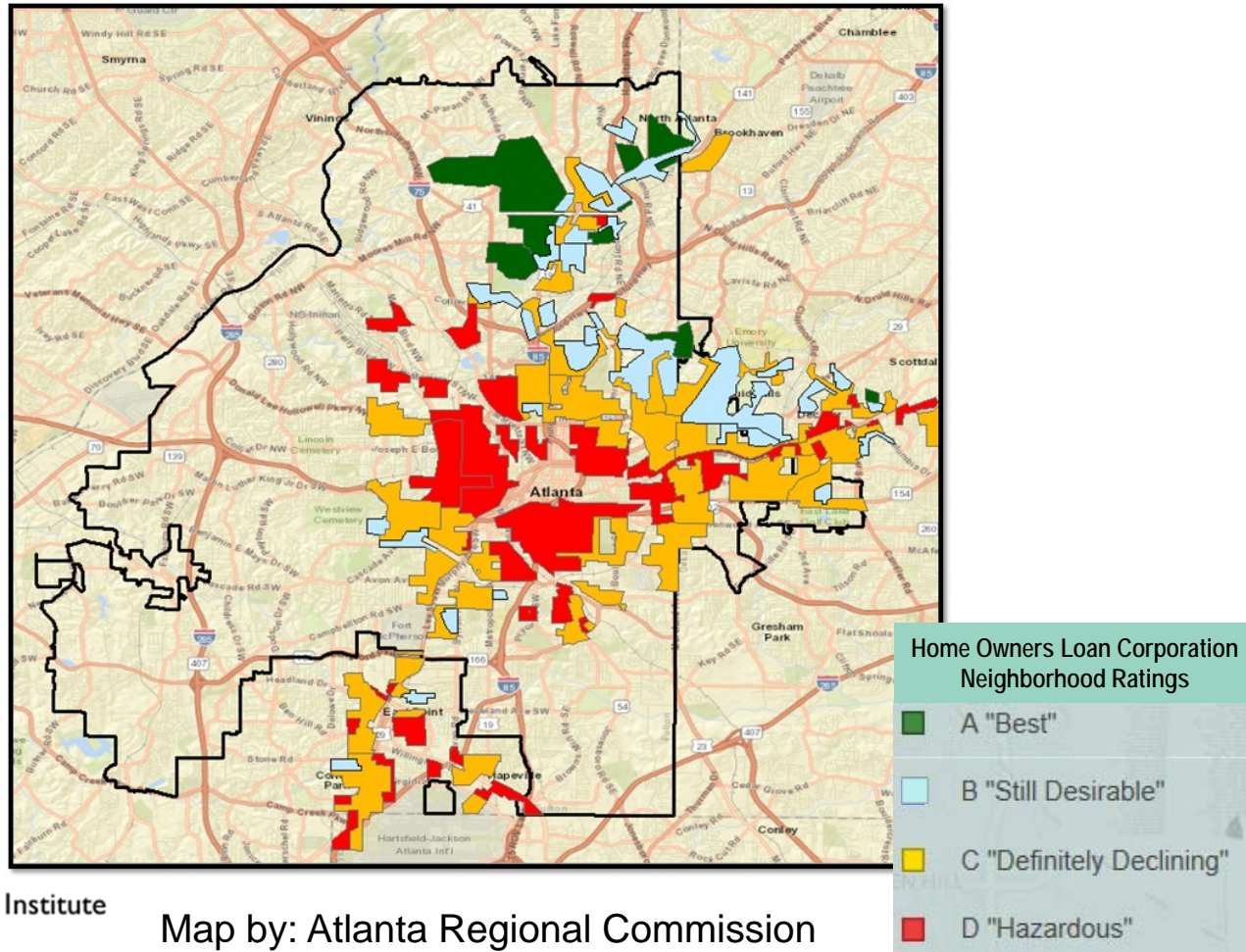
Urban Studies Institute

Segregating Forces

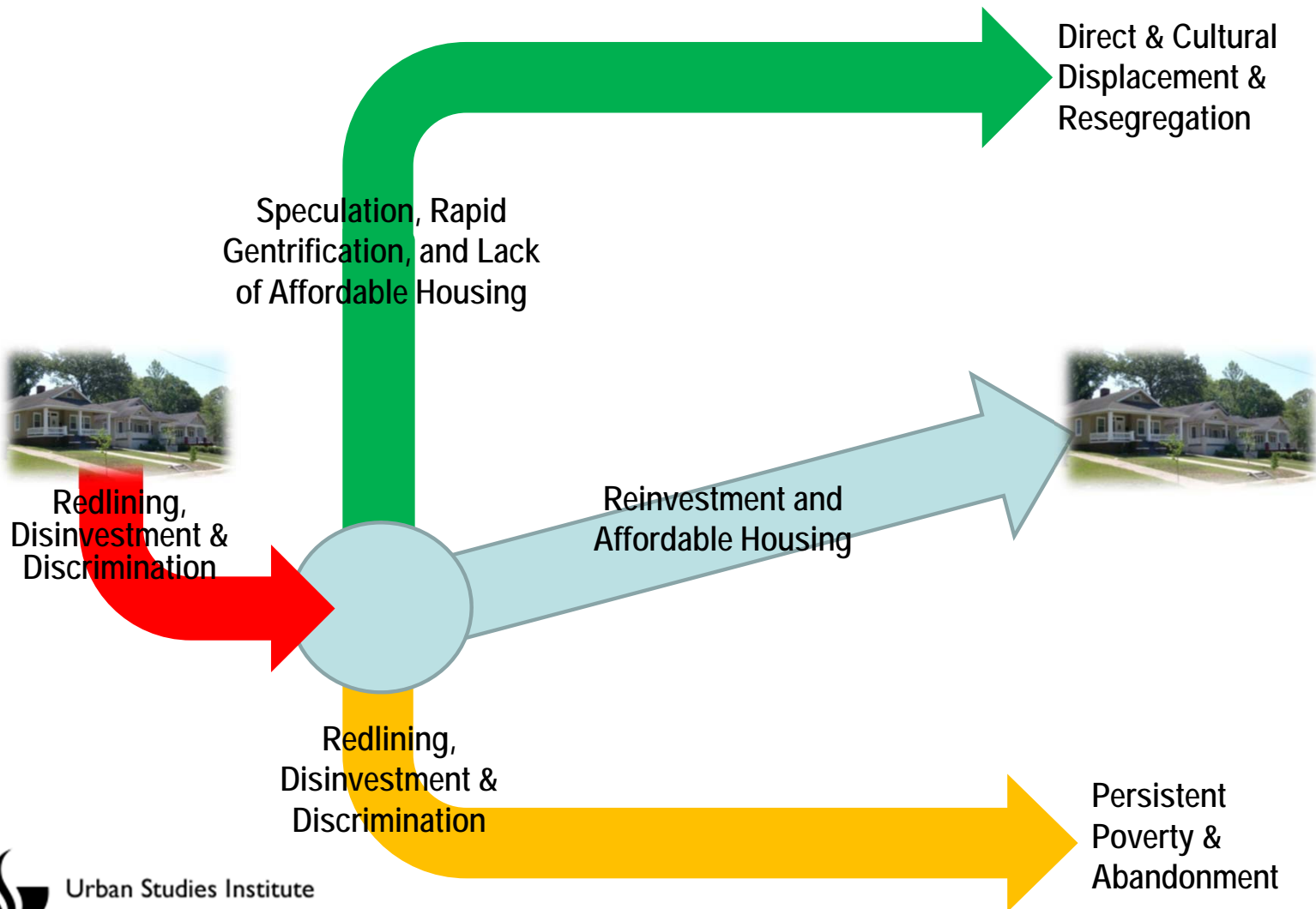
- ☐ “Private market” discrimination, harassment & violence
- ☐ Government sanctioning & permission of such behavior
- ☐ Racially restrictive covenants & government enforcement
- ☐ Racial zoning followed by exclusionary zoning
- ☐ FHA/VA (& bank) redlining & financing of racially exclusive suburbs
- ☐ From redlining to subprime lending to ... redlining?
- ☐ Disparate impacts of “colorblind” policies and practices



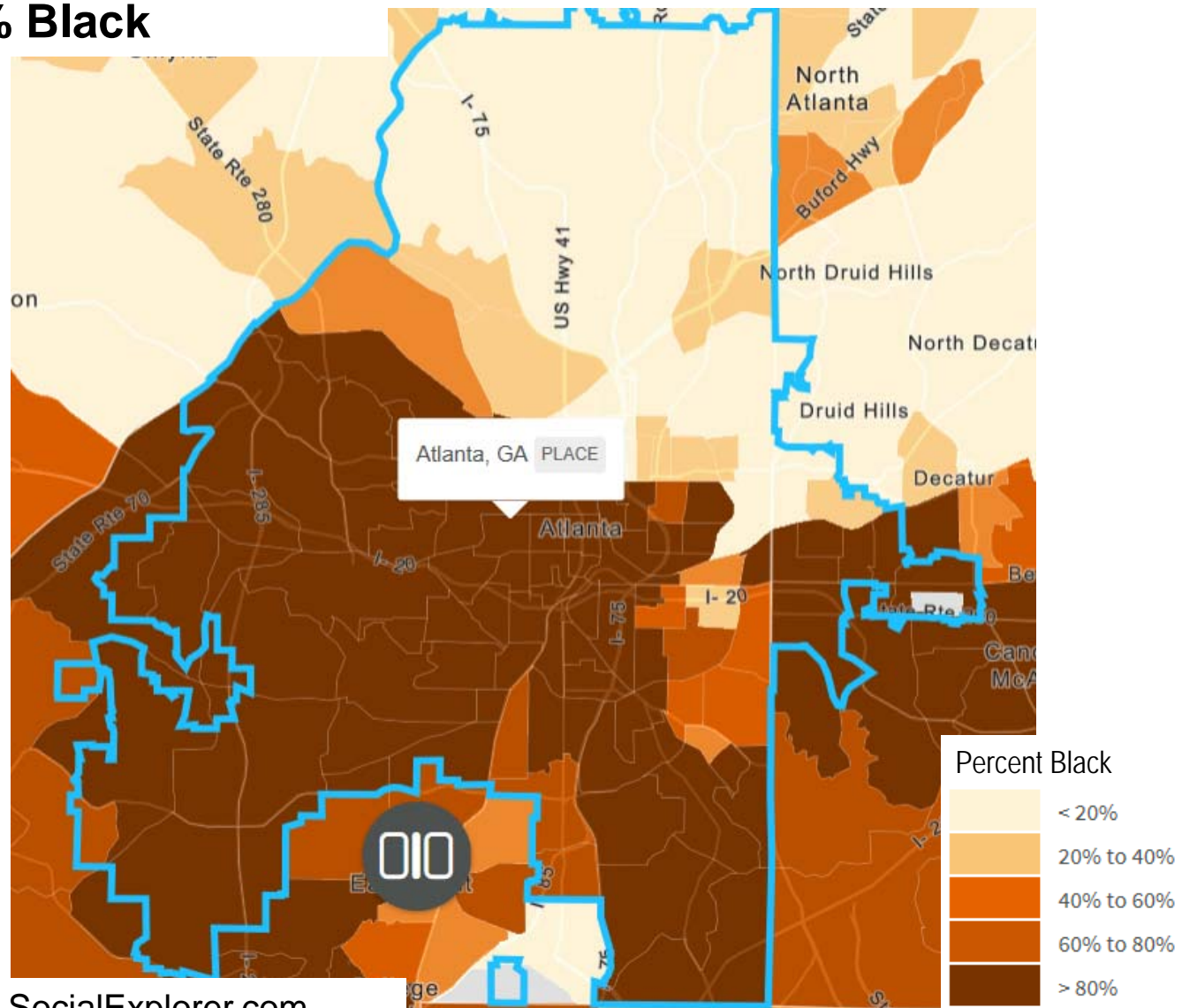
Redlining Legacies – Neighborhood Disinvestment and Gentrification



Urban Studies Institute

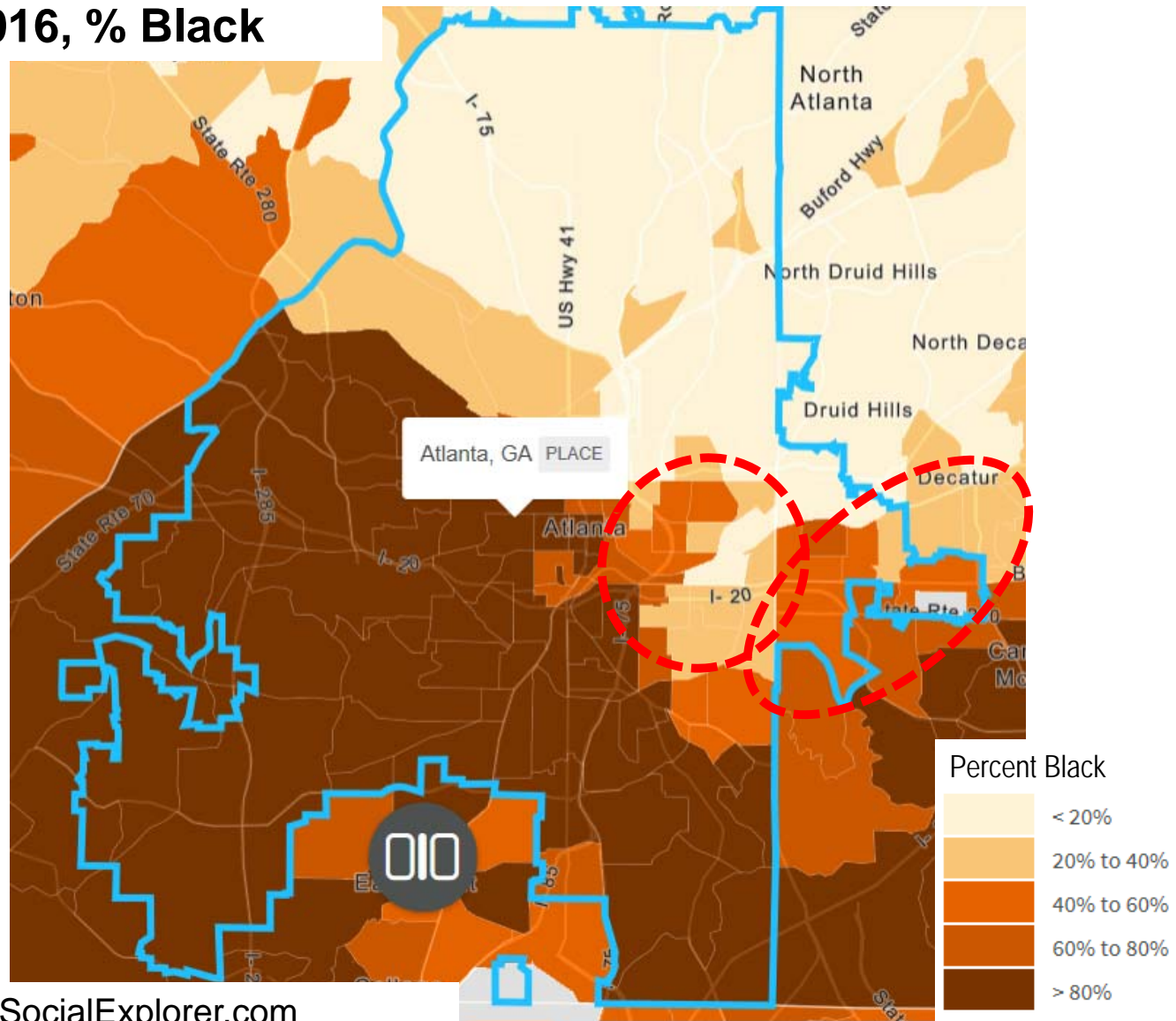


1990, % Black



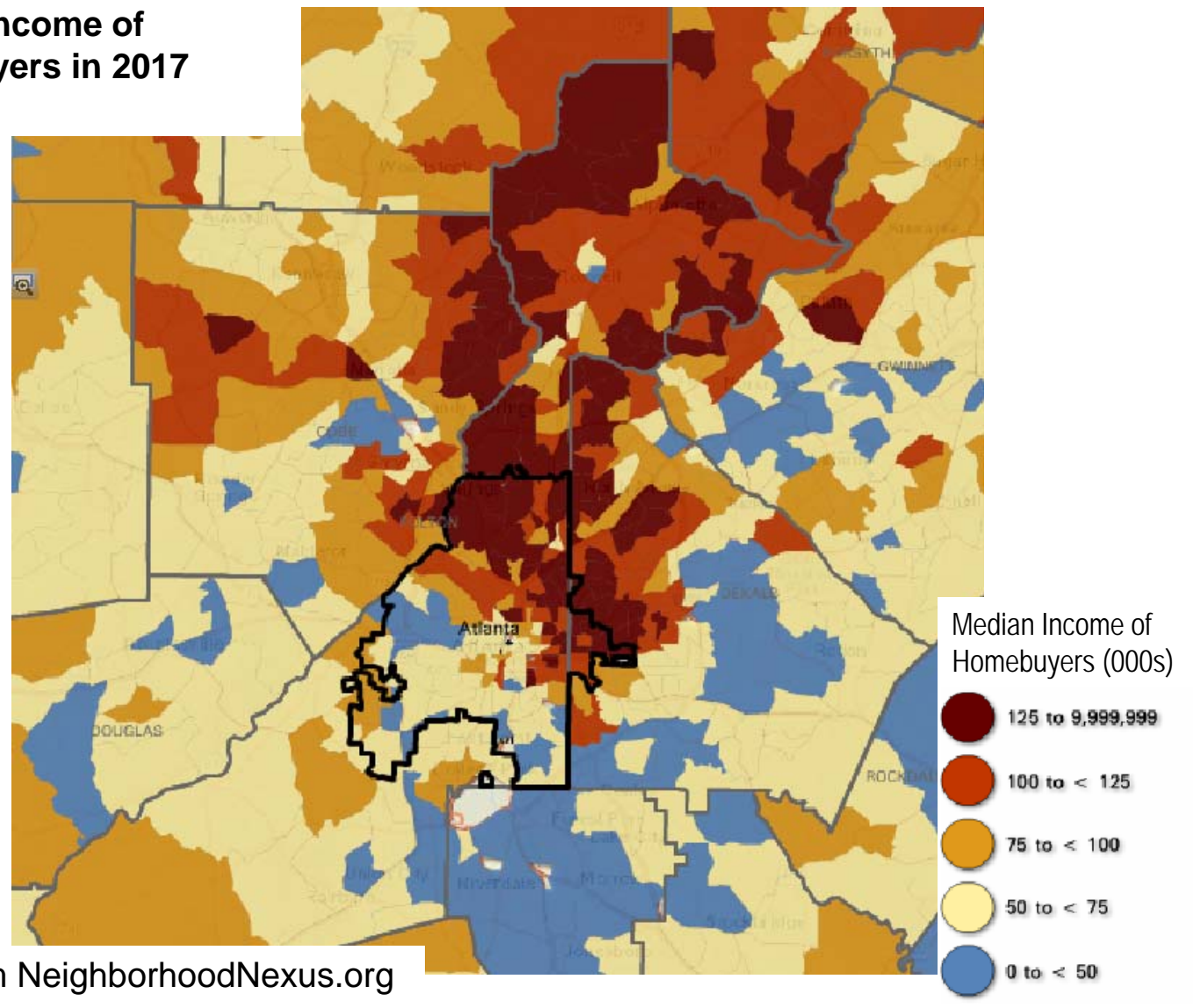
ACS, from SocialExplorer.com

2012-2016, % Black



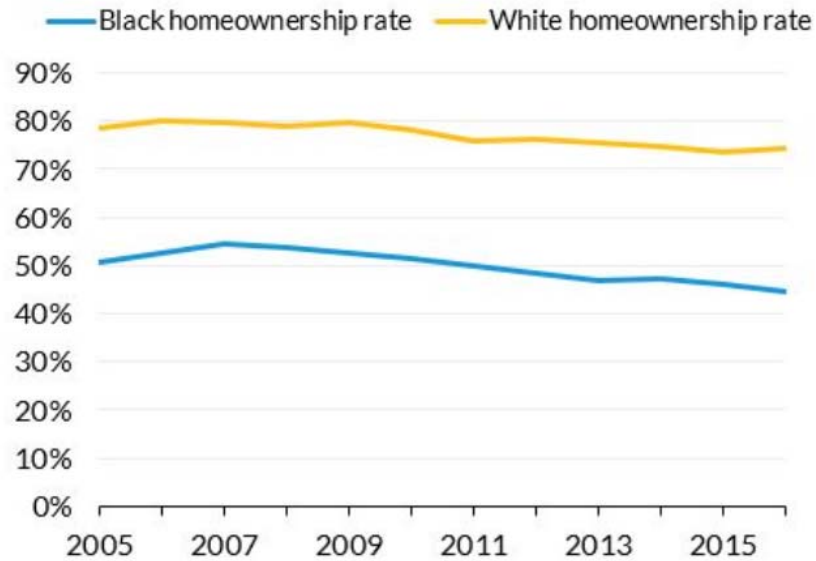
ACS, from SocialExplorer.com

Median Income of Homebuyers in 2017 (HMDA)



HMDA, from NeighborhoodNexus.org

Atlanta Metropolitan Area



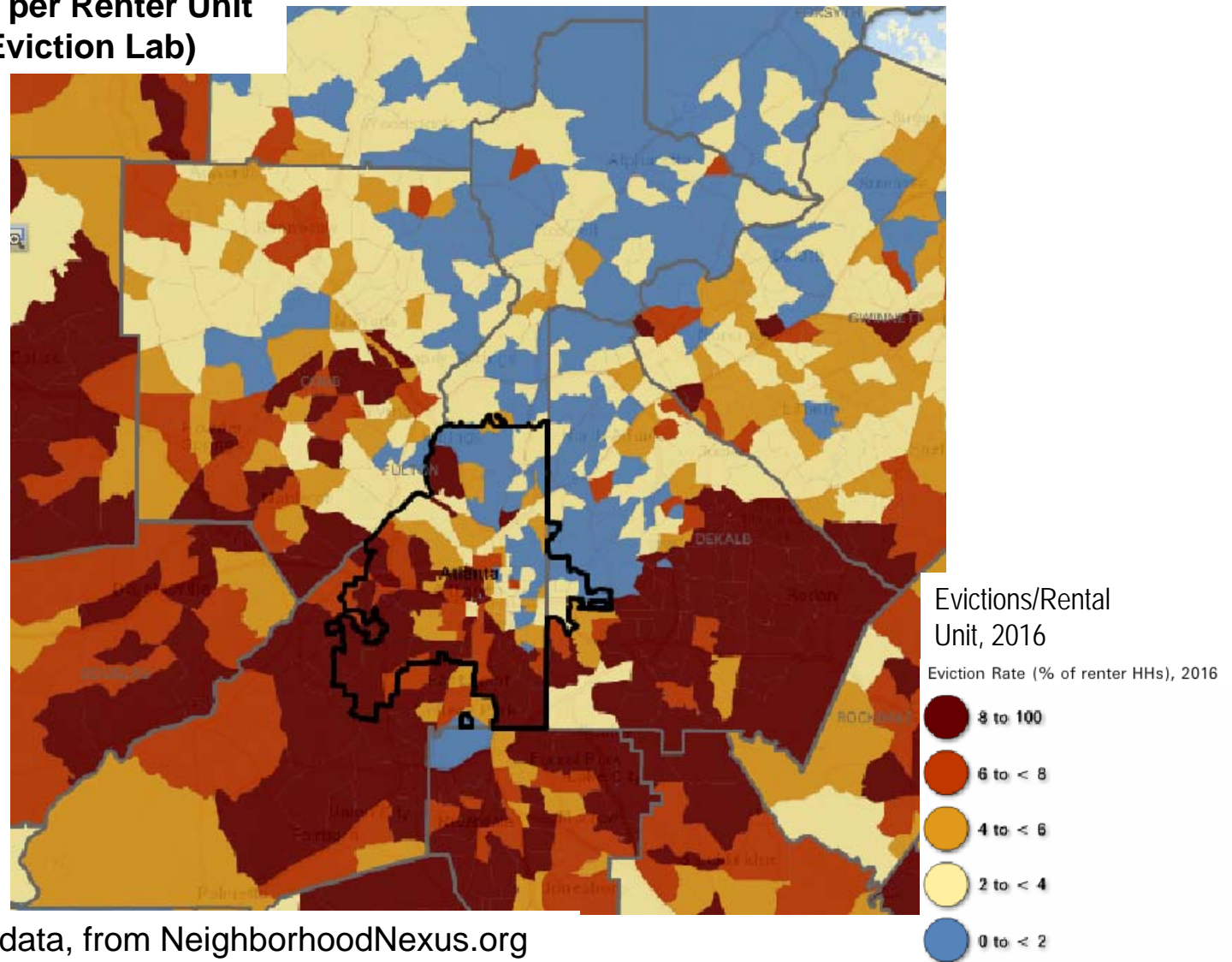
<https://www.urban.org/urban-wire/mapping-black-homeownership-gap>

2017 Home Purchase Lending in the Atlanta Metropolitan Area

	Home Purchase Applications	Home Purchase Loans Made	% Applications Not Originated	% of Loans that are FHA
Black	31,908	19,965	37%	52.4%
White	68,373	50,508	26%	23.8%

Calculation of 2017 Home Mortgage Disclosure Act data

Evictions per Renter Unit in 2016 (Eviction Lab)



EvictionLab data, from NeighborhoodNexus.org

Some Policy Recommendations

- **REDUCE** exclusionary zoning & building ordinances, esp. in suburbs
- **FUND** affordable housing, especially in areas threatened with gentrification, higher-income suburbs/areas, & areas w/access to transit, jobs, and services
- **EXPAND** inclusionary zoning across city/suburbs
- **INCREASE** tenant protections & provide legal & rental assistance
- **ACQUIRE** vacant properties for affordable housing / community development
- **PROVIDE** down-payment assistance & affordable loans to homebuyers
- **SUPPORT** community development efforts in lower-income neighborhoods
- **ENACT** source-of-income protection at local and state level
- **ENFORCE** and **STRENGTHEN** Fair Housing Act, Community Reinvestment Act, & Consumer Financial Protection Bureau



Question & Answer



TABLE DISCUSSION

At your tables please discuss the following:

1. What is your experience (personal, family, co-workers, neighbors) with housing discrimination?
2. How are the clients or patients you serve impacted by housing discrimination?

Please write your ideas for question three and discuss them with your table:

3. What actions can you and/or your organization take to improve health equity within this context?



SOLUTIONS PANEL

Panelists:

Leonard Adams, Quest Community Development Organization

Sarah Bolling Mancini, Atlanta Legal Aid Society

Lauren Washington, Atlanta Volunteer Lawyers Foundation, Inc.

Moderator:

Odetta MacLeish-White, TransFormation Alliance

ARCHI UPDATES

Kathryn Lawler

ARCHI

ATLANTA TRANSFORMATION SCENARIO



FAMILY PATHWAYS



EXPAND INSURANCE



INNOVATION FUNDS



GLOBAL BUDGETING



CARE COORDINATION



HEALTHY LIFESTYLES



CAPTURE AND REINVEST



RIDES TO WELLNESS SUMMIT


June 20, 2018

Loudermilk Center for Regional Community



Bottom line. Balanced health. Better beings.

ARCHI PARTNERS



Alliant GMCF
American Cancer Society
American Diabetes Association
Arthur M. Blank Family Foundation
Atlanta Community Food Bank
Atlanta Community Health Interfaith Partners
Atlanta Housing Authority
Atlanta Humane Society
Atlanta Neighborhood Development Partnership (ANDP)
Atlanta Regional Commission
Atlanta Volunteer Lawyers Foundation
BlueFlowers.org
Carter Center
Charitable Connections
ChildKind
Children's Healthcare of Atlanta
CHRIS Kids, Inc.
Clayton State University, School of Nursing
Club E. Atlanta
Common Market Georgia
Community Foundation for Greater Atlanta, Inc.
Community Health interfaith Partners
Community of College Park
Concerned Black Clergy
DeKalb County Board of Health
DeKalb County Government
Diabetes Community Action Coalition, Inc.
Emory Fuqua Center for Late Life Depression

Emory Healthcare
Emory University – Urban Health Program
Enterprise Community Partners
Families First, Inc.
Friends of Refugees
Fulton County Government
Georgia Alliance for Health Literacy
Georgia Center for Nonprofits
Georgia Department of Public Health
Georgia Global Health Alliance
Georgia Health Policy Center
Georgia Institute of Technology
Georgia Primary Care Association
Georgia State University
Georgia Watch
Get Georgia Reading
Global Dialogues
Grady Health System
Health Equity Advocacy & Resource Center
Health Promotion Action Coalition, Inc
Hillside
Historic Westside Gardens Atl, Inc
I Can Be The Change
Insure Georgia
Jesse Parker Williams Foundation
Jesus Set the Captive Free
Kaiser Permanente of Georgia
Legacy Community Housing Corporation
Live Living International Foundation

Marcus Autism Center
Metro Atlanta Urban Farm
Metropolitan Counseling
Muni Cares, Inc.
Oakhurst Medical Centers
Odyssey Family Counseling Center
One Talent Inc.
Open Hand Atlanta
Partnership for Southern Equity
Perkins & Will
Piedmont Healthcare
Resurgita Health Solutions
Rimidi, Inc
RiteAid Pharmacy
Saint Joseph's Health System/Mercy Care
Saving Our Sons & Sisters International
Shepherd Center, Inc.
South Fulton Human Services Coalition
Southside Medical Center
TechBridge
TQIntelligence, Inc.
Truly Living Well
United Way of Greater Atlanta
Veterans Empowerment Organization
Visiting Nurse Health System
Voices of Georgia's Children
Wellcare
Wellstar Health System
West End Medical Center Inc.



UPCOMING MEETINGS:

Visit: www.archicollaborative.org

