



# ARCHI & GGHA JOINT BREAKFAST

June 12, 2019



# **WELCOME & INTRODUCTIONS**

**Karen Minyard, ARCHI**



# ATLANTA TRANSFORMATION SCENARIO



**FAMILY PATHWAYS**



**EXPAND INSURANCE**



**INNOVATION FUNDS**



**GLOBAL BUDGETING**



**CARE COORDINATION**



**HEALTHY LIFESTYLES**



**CAPTURE AND REINVEST**

**Health Equity**

# ARCHI PARTNER ASSESSMENT

Spring 2019

# A FEW HEADLINES

- 19 respondents were unsure if their organization had signed an ARCHI partner agreement
- 78% of respondents strongly or somewhat agree that being a part of ARCHI motivates them to do more than is required in their role
- 88% of respondents indicated that they had a clear understanding of ARCHI's priorities
- 92% of respondents strongly or somewhat agree that diverse perspectives are valued within ARCHI
- Individuals have acquired useful knowledge, developed valuable relationships, and have a greater impact due to ARCHI participation



# AGENDA

- **ARCHI Overview**
- **Health Equity Overview**
- **Keynote speaker from Global to Local – Seattle**
- **Health Equity Practices in Global Health Panel – Atlanta**
- **Table Dialogue**
- **Announcements & Closing**



# GEORGIA GLOBAL HEALTH ALLIANCE

Maria Thacker-Goethe, Executive Director



# GEORGIA GLOBAL HEALTH ALLIANCE



**Mission:** The GGHA exists to advance global health equity by promoting and facilitating collaboration amongst business, academia, non-profits and government organizations within Georgia and linking them with partners in the US and other countries.

CONNECT

MOBILIZE

ADVOCATE & EDUCATE

GROW

[www.gghalliance.org](http://www.gghalliance.org) | @GGHAlliance



# DEKALB/FULTON COUNTY TO WORLDWIDE STATISTICS

## *Infant mortality rates*

- The infant mortality rate in 2017 was 8.1 per 1,000 live births in DeKalb county across all races and sexes. In Thailand, the IMR is 8.2 per 1,000 live births across all races and sexes in 2017 (UN Inter-Agency Group for Child Mortality Estimation, 2017).

## *HIV Prevalence*

- In DeKalb county in 2015, 1,167 of every 100,000 people were living with HIV (OASIS, 2015). In Libya, there was 1,168 of every 100,000 people living with HIV (Our World in Data, 2015).
- In Fulton County, 1,599 of every 100,000 people were living with HIV in 2015 and there was 1,475 of every 100,000 people living with HIV in Turkmenistan (AIDSVU and Our World in Data, 2015).



# NON-COMMUNICABLE DISEASES

In DeKalb County and Fulton County, ischemic heart and vascular disease is ranked as the number one leading cause of death between the years of 2013-2017 (OASIS, 2017).

The visualization map in the link below demonstrates the burden of non-communicable diseases by age-standardized DALY [disability adjusted life year) rates per 100,000 individuals between 1990-2017.

<https://ourworldindata.org/grapher/burden-of-disease-rates-from-ncds>





# KEYNOTE SPEAKER: JONATHAN SUGARMAN



Jonathan Sugarman, MD, MPH, FAAFP, FACPM  
*Chief Executive Officer, Global to Local*





# Bringing Global Health Home



*ARCHI Quarterly Breakfast/GGHA*  
June 12, 2019  
Atlanta, GA



Jonathan R. Sugarman, MD, MPH



# SPEAKING OF BRINGING SOMETHING HOME...



# GLOBAL HEALTH ON THE LOCAL LEVEL

**Seattle** is home to many global health organizations

There are significant disparities in health outcomes among people living within **King County**

Can **global health** approaches work here at home?

## WHAT DO WE MEAN BY “GLOBAL HEALTH”?

“Global health is an area for study, research, and practice that places a priority on improving health and achieving equity in health for all people worldwide. [It] emphasizes transnational health issues, determinants, and solutions; involves many disciplines within and beyond the health sciences and promotes interdisciplinary collaboration; and is a synthesis of population-based prevention with individual-level clinical care.”

Source: Koplan et al. Lancet. 2009;373:1993-95.



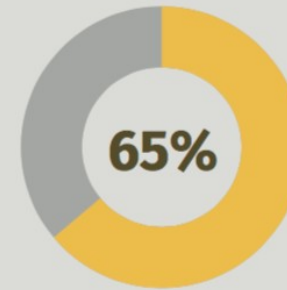
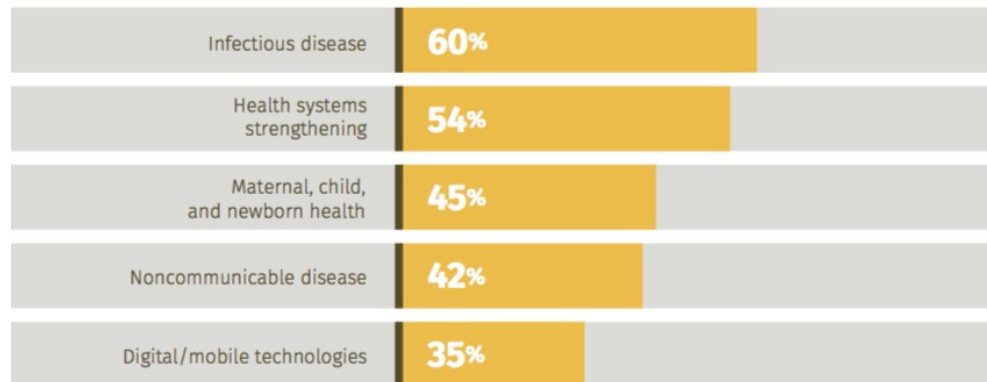
# GLOBAL HEALTH ORGANIZATIONS IN WASHINGTON



**Washington-based organizations  
working in global health**

Nonprofit and for-profit institutions engage in global health across diverse disciplines

## Top five global health disciplines



of organizations are  
also advancing health  
equity in the U.S.

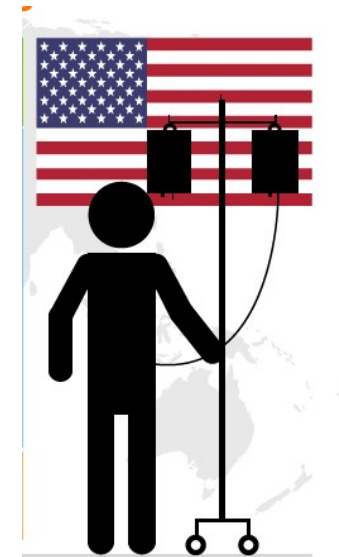
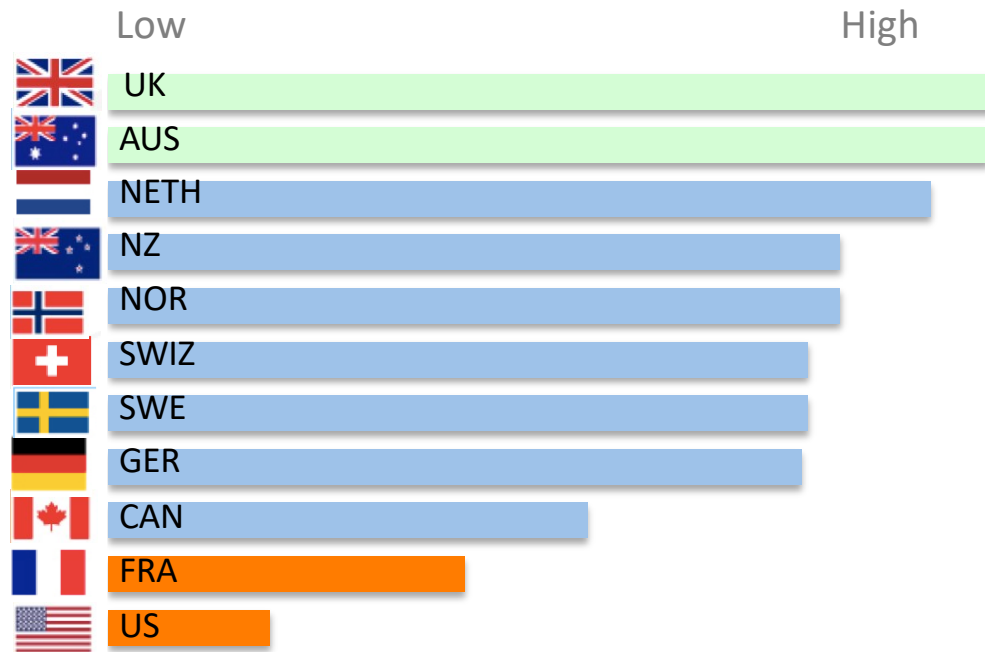
Source: Washington Global Health Alliance [[www.wghalliance.org/landscapestudy2018](http://www.wghalliance.org/landscapestudy2018)]



# WHY LOOK ELSEWHERE?

# US HEALTH CARE RANKS LAST AMONG WEALTHY COUNTRIES

## Overall Health Care System Ranking



E. C. Schneider, D. O. Sarnak, D. Squires, A. Shah, and M. M. Doty, *Mirror, Mirror: How the U.S. Health Care System Compares Internationally at a Time of Radical Change*, The Commonwealth Fund, July 2017.



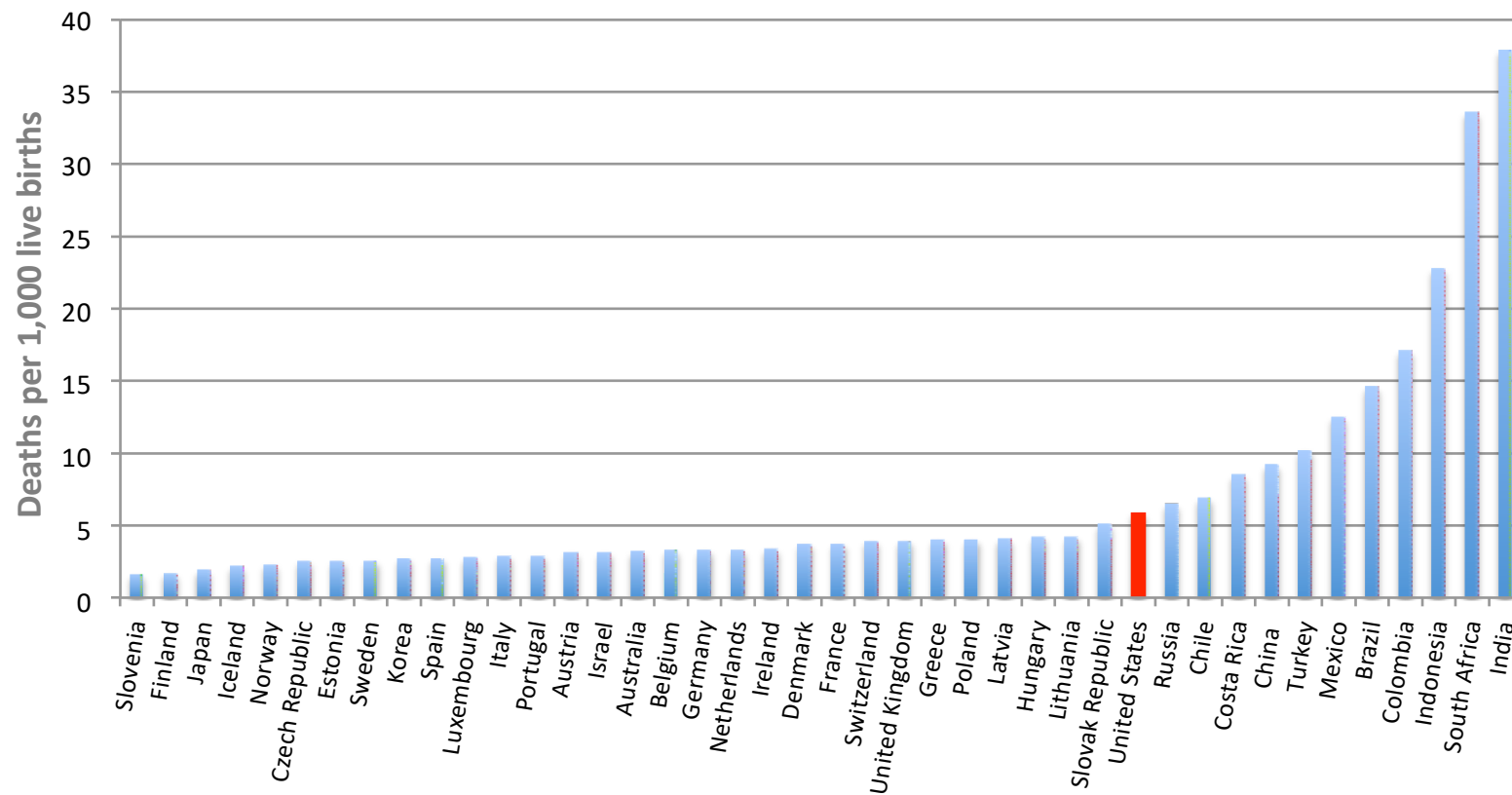
# HEALTH CARE SYSTEM PERFORMANCE RANKINGS

	AUS	CAN	FRA	GER	NETH	NZ	NOR	SWE	SWIZ	UK	US
<b>OVERALL RANKING</b>	<b>2</b>	<b>9</b>	<b>10</b>	<b>8</b>	<b>3</b>	<b>4</b>	<b>4</b>	<b>6</b>	<b>6</b>	<b>1</b>	<b>11</b>
Care Process	2	6	9	8	4	3	10	11	7	1	5
Access	4	10	9	2	1	7	5	6	8	3	11
Administrative Efficiency	1	6	11	6	9	2	4	5	8	3	10
Equity	7	9	10	6	2	8	5	3	4	1	11
Health Care Outcomes	1	9	5	8	6	7	3	2	4	10	11

E. C. Schneider, D. O. Sarnak, D. Squires, A. Shah, and M. M. Doty, *Mirror, Mirror: How the U.S. Health Care System Compares Internationally at a Time of Radical Change*, The Commonwealth Fund, July 2017.

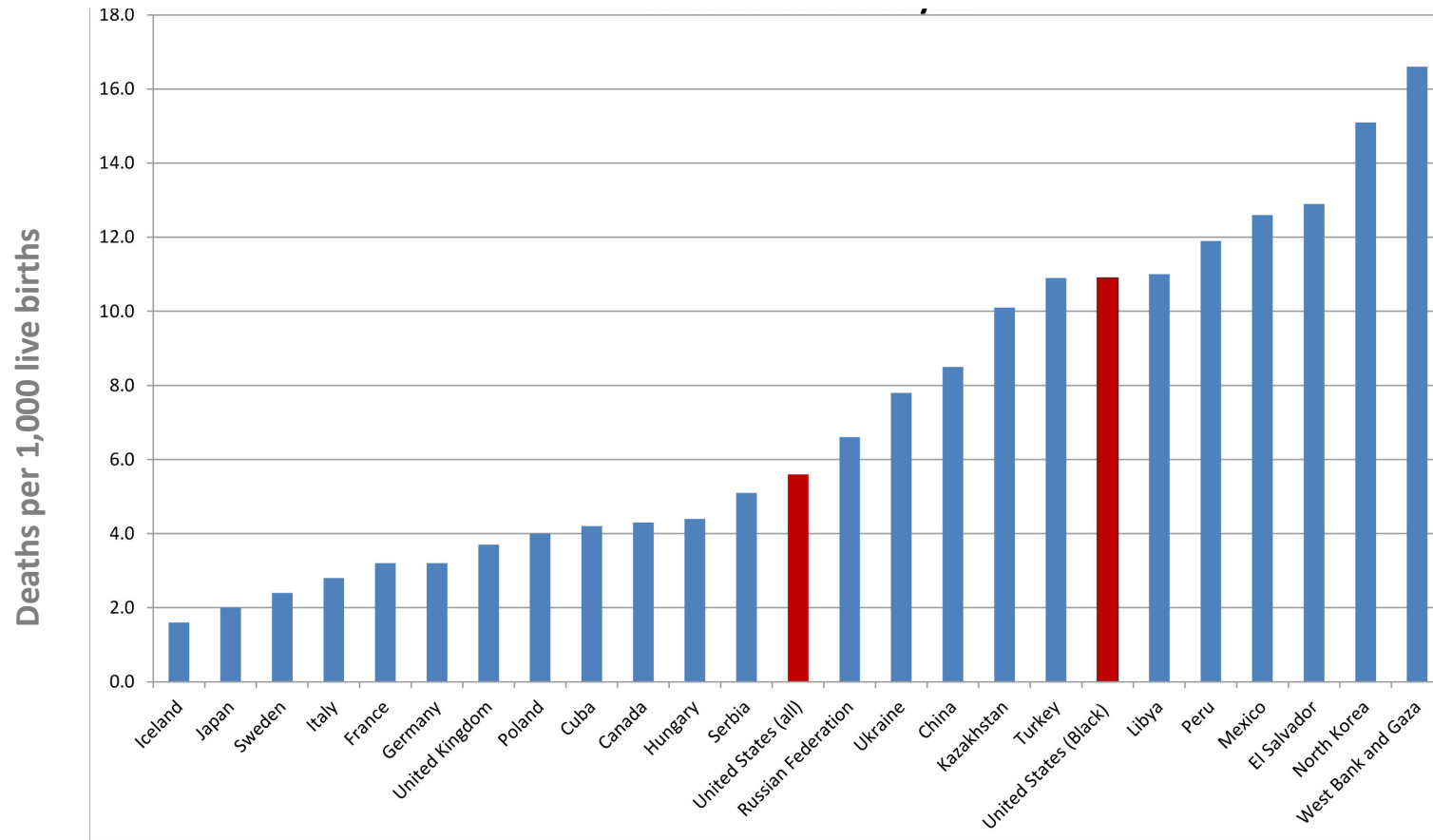
# OUTCOMES LIKE MATERNAL MORTALITY...

OECD AND SELECTED NON-OECD COUNTRIES, 2015

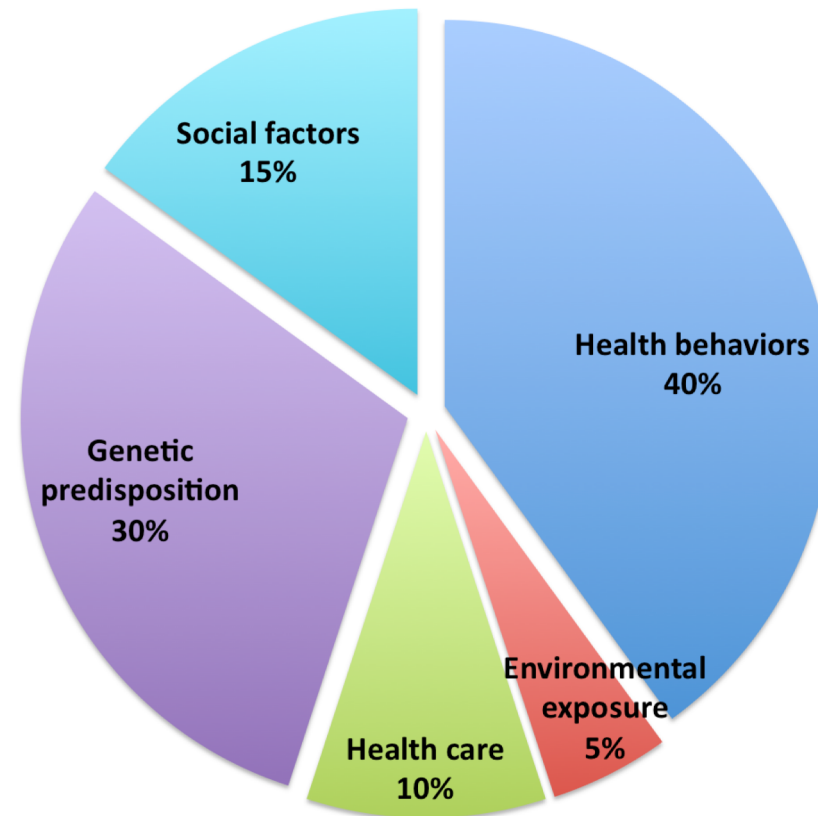


## AND INFANT MORTALITY...

### BY COUNTRY (2016)




## REMINDER: WHAT DETERMINES “HEALTH”?



Source: Schroeder SA. N Engl J Med 2007;357:1221-1228.

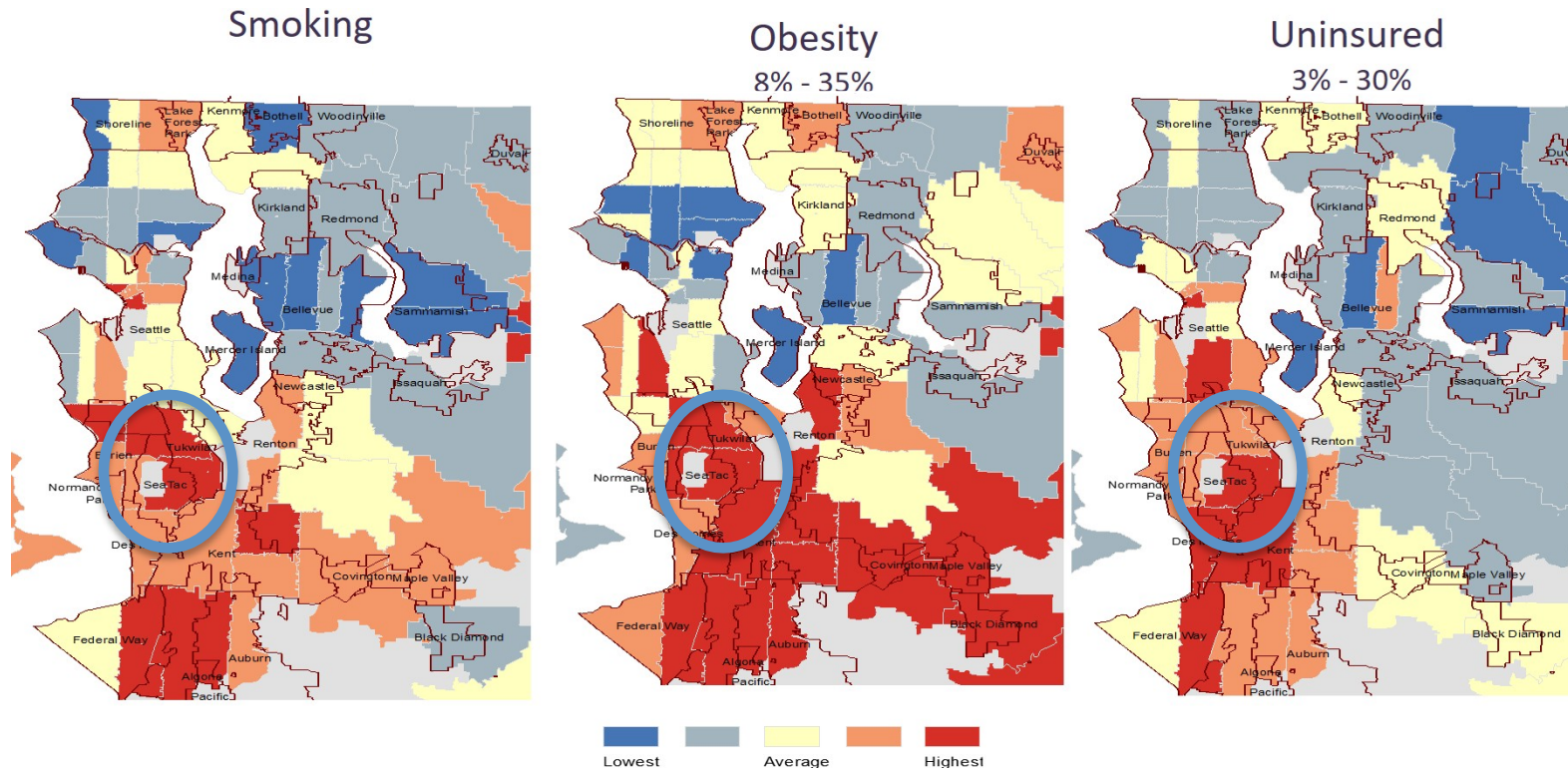


## GLOBAL TO LOCAL'S MISSION:



To demonstrate the effectiveness of global health strategies to improve the health status of local underserved communities

# HOW DID GLOBAL TO LOCAL END UP IN SOUTH KING COUNTY?



# OUR APPROACH



## THE MODEL

**1 LISTEN**

**2 SCAN**

**3 CO-DESIGN**

**4 LEARN**

**5 DISSEMINATE**



## APPROACH REFLECTS DEEP COMMUNITY ENGAGEMENT OF SUCCESSFUL INITIATIVES ELSEWHERE, SUCH AS...

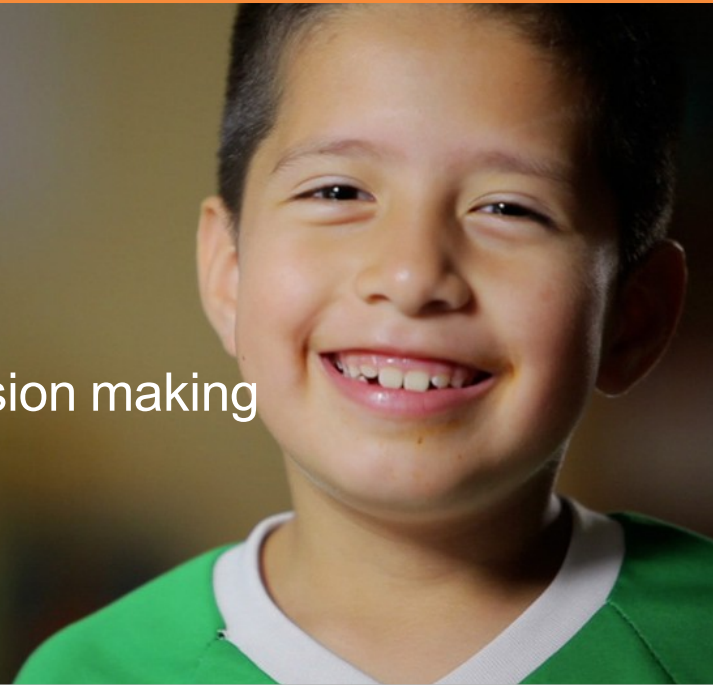


Project Ethiopia operates fully at the grassroots level. **All projects originate with and are guided by the villagers themselves.** We listen closely to what the community has to say from start to finish. This is where we hear most honestly about the challenges facing the community and this is where we find the ideas and solutions that will make a lasting impact.



## TOP NEEDS IDENTIFIED

1. Limited economic opportunities
2. Language and cultural barriers
3. Difficulty navigating the system
4. Limited community voice in decision making



# SELECTED CATEGORIES OF POTENTIALLY TRANSFERABLE GLOBAL HEALTH INTERVENTIONS

1. Use Community Health Workers
2. Link health with economic development
3. Mobilize community-based organizations
4. Generate focused campaigns around priority health issues
5. Mobile Health: Use communications technology to transform practices
6. Integrate public health and primary medical care services



Source: [https://www.globaltolocal.org/wp/wp-content/uploads/2017/02/G2L\\_LandscapeAssessment\\_FINAL.pdf](https://www.globaltolocal.org/wp/wp-content/uploads/2017/02/G2L_LandscapeAssessment_FINAL.pdf)

# COMMUNITY HEALTH WORKERS

- ✎ Culturally tailored projects/initiatives
- ✎ Community outreach
- ✎ Health education
- ✎ Local leadership
- ✎ Systems change









## EXAMPLE: EXERCISE PROGRAMS COUPLED WITH FINANCIAL EDUCATION

Community  
Health Workers



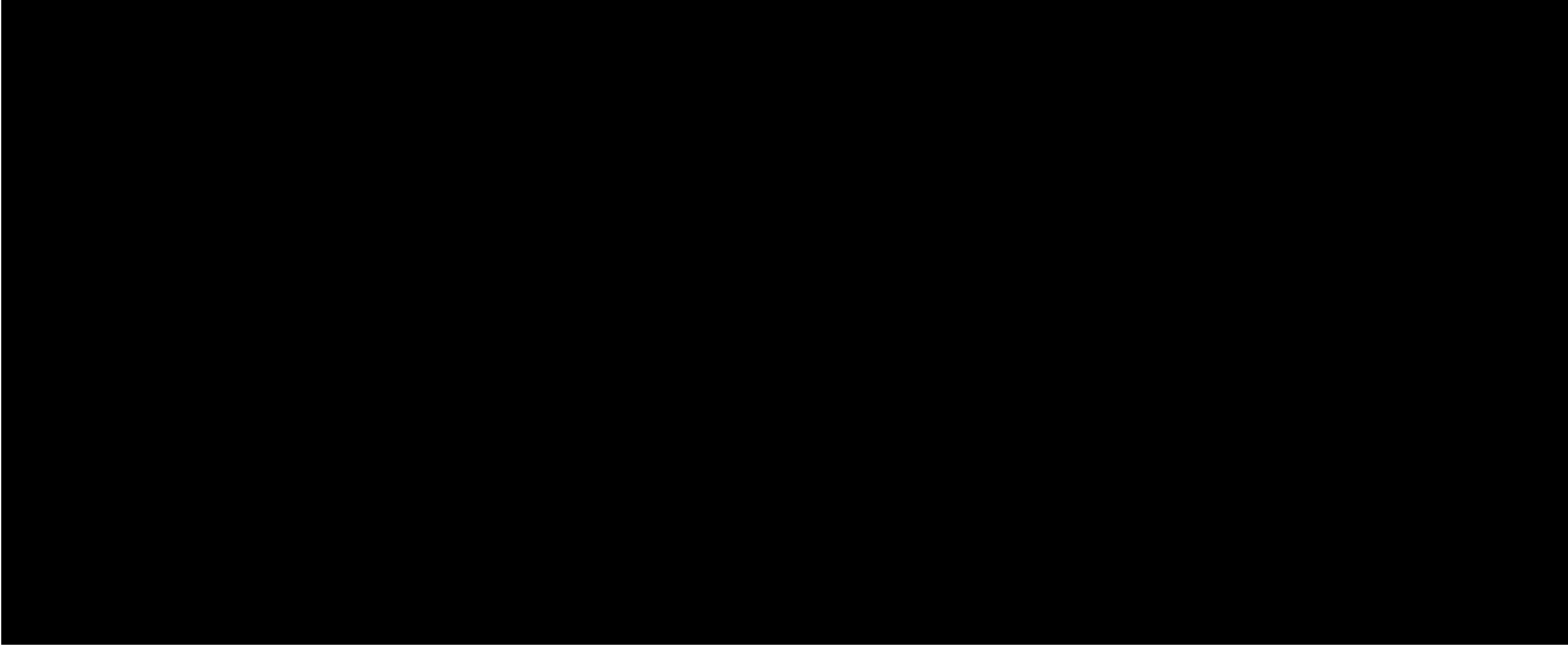
# FOOD ACCESS AND ECONOMIC DEVELOPMENT

## Food Innovation Network

-  Linking health with economic development
-  Improve access to healthy foods
-  Creation of a food business cluster
-  Collective impact model with 15 + partners supporting 80+ aspiring entrepreneurs



FOOD  
**INNOVATION**  
NETWORK  
a program of Global to Local



# COMMUNITIES OF OPPORTUNITY: A PUBLIC-PRIVATE PARTNERSHIP



*Through community-driven partnerships, we are creating greater racial, economic, and health equity that enables all people in King County to thrive and prosper*

- The **SeaTac/Tukwila Collaborative** supports opportunities for residents and businesses to improve health, social and economic conditions.
- **SeaTac/Tukwila key strategies:**
  - Increase access to healthy and affordable food
  - Support the growth and stability for cultural small businesses
  - Advance economic stability for residents through living-wage jobs
  - Improve social connections and engagement for the culturally diverse communities in SeaTac/Tukwila

## A NEW VENUE: RURAL COMMUNITIES

**BRIDGES**



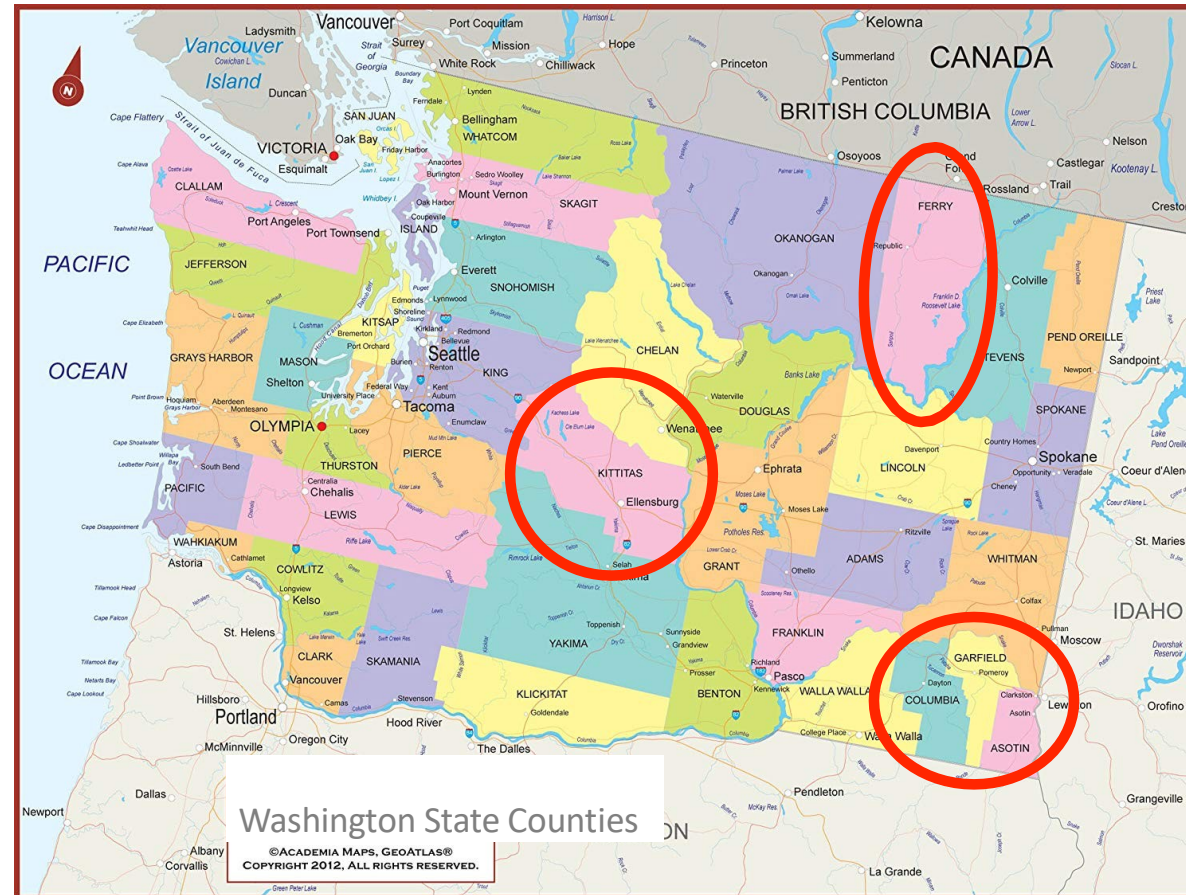
**Bringing Global Health Expertise  
to Rural Washington**



**Washington is the home to many organizations that are world leaders in global health. The Washington State Legislature seeks to learn how the state's expertise in global health can contribute to improved health in rural communities in Washington.**



# PARTICIPATING RURAL WASHINGTON COUNTIES



## THINGS TO CONSIDER IF CONTEMPLATING REPLICATION OF THE G2L MODEL

- Alignment with existing health and human services delivery system
- Balance of innovation through application of global health strategies and application of “any means necessary”
- Governance: balance of global health expertise and community advocates

## MORE INFORMATION



Jonathan Sugarman, MD, MPH

[jonathan@globaltolocal.org](mailto:jonathan@globaltolocal.org)

[www.globaltolocal.org](http://www.globaltolocal.org)

# HEALTH EQUITY PRACTICES IN GLOBAL HEALTH – ATLANTA BASED

## *Moderator:*

- Gigi Bastien – Morehouse School of Medicine

## *Panel speakers:*

- Dr. Louis Sullivan – National Health Museum
- Patrick O’Carroll – The Task Force for Global Health
- Brandon Talley – CDC Foundation

## *Examples:*

- Chris Parker – Georgia Health Policy Center



# Georgia Health Policy Center Population & Global Health

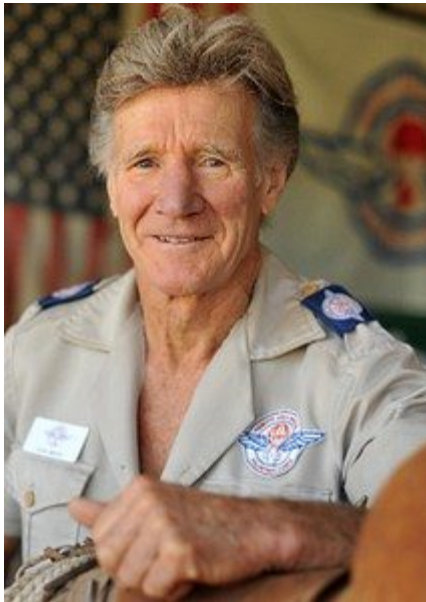
Chris Parker, Director

Alyssa Lowe, Senior Research Associate

# Remote Area Medical (RAM)



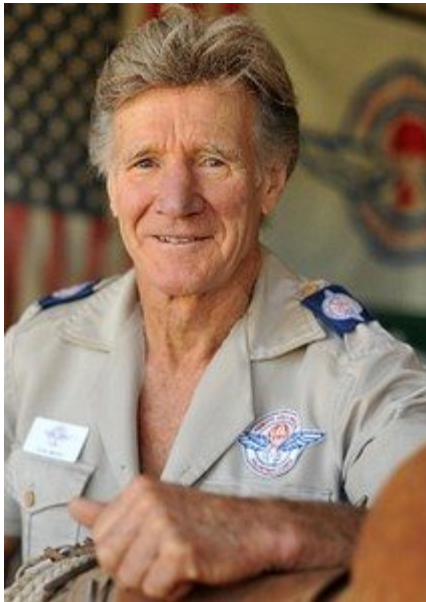
"My vision for Remote Area Medical™ developed when I suffered a personal injury while living among the Wapishana Indians in Guyana, South America.



I was isolated from medical care, which was about a 26 day journey away.

I witnessed the near devastation of whole tribes by what would have been simple or minor illnesses to more advanced cultures."

# Remote Area Medical (RAM)



"When I left Guyana, I vowed to find a way to deliver basic medical aid to people in the world's inaccessible regions...

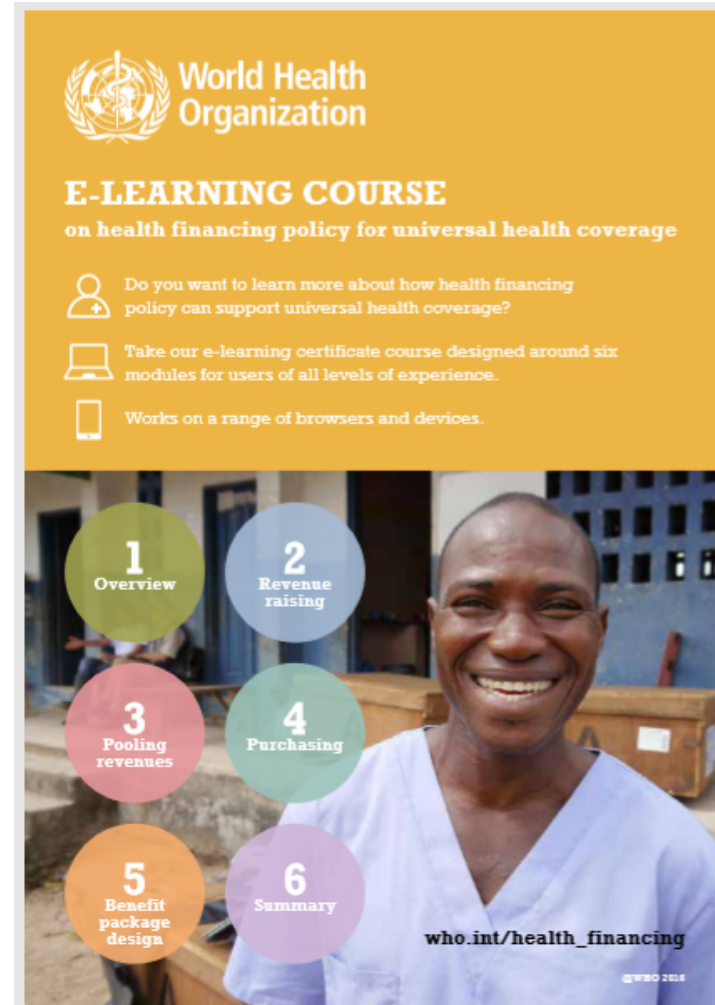
RAM is the way I have kept that promise, not only to the Wapishana Indians, but to thousands around the world in similar conditions."



# Pooled Community Funding

The World Health Organization is promoting pooled community funds or “pooling” as a strategy for funding:

- Global health research and development; and,
- Universal Health Care. They promote pooling as a way to diversify funding streams in order to minimize risk.



# South Sudan Health Pooled Fund



- The [Health Pooled Fund](#), supported by multiple donors, focuses on successfully strengthening health systems and delivering essential health services in South Sudan.
- Within the fund are 23 other implementing partners that support primary health care services in health facilities, including hospitals, across 55 counties.

# We believe...

... everyone can learn from the unique challenges and innovative solutions of others. Thus, alongside our partners, we strive to uncover, broadly share and promote the adaptation of lessons learned.

# Subject Matter Expertise

- Nutrition and food security
- Maternal and child health
- Non-communicable diseases
- Behavioral health
- Health Systems Strengthening
- Health in all Policies
- Systems thinking

# Services

- Program and partnership design, monitoring and evaluation
- Meeting design and facilitation
- Strategic planning
- Environmental scans
- Formative research
- Literature and Desk Review
- Systems mapping
- Implementation science and technical assistance
- Workforce development
- Policy analysis
- Realist evaluation

# TABLE DIALOGUE 10 MINUTES



- 1: You will each have a discussion handout in front of you.
- 2: You can record your responses from the table on the handout and discuss simultaneously.
- 3: Please leave the discussion points on the table for us to collect.  
**\*\*NOTE:** There is a 4<sup>th</sup> question on the back of the handout.
- 4: Feel free to exchange contact details!





# DISCUSSION POINTS

*List the organizations/agencies/institutions represented at your table.*

1. What was your primary takeaway from the Global to Local presentation?
2. How relevant is the concept of Global to Local to your work/work of your organization?
3. What are some of the persistent health challenges your community faces that could be addressed by global strategies?
4. Would you be interested in learning more about Global to Local opportunities in the Atlanta area? If so, what information/training would be most helpful?



# TABLE REPORT OUT



# **ANNOUNCEMENTS & CLOSING**

# ARCHI PARTNERS

Alliant GMCF  
American Cancer Society  
American Diabetes Association  
Arthur M. Blank Family Foundation  
Atlanta Bicycle Coalition  
Atlanta Community Food Bank  
Atlanta Community Health Interfaith Partners  
Atlanta Housing Authority  
Atlanta Humane Society  
Atlanta Neighborhood Development Partnership (ANDP)  
Atlanta Regional Commission  
Atlanta Relay Bike Share  
Atlanta Volunteer Lawyers Foundation  
BlueFlowers.org  
CareSource  
Carter Center  
Charitable Connections  
ChildKind  
Children's Healthcare of Atlanta  
CHRIS Kids, Inc.  
Clayton State University, School of Nursing  
Club E. Atlanta  
Common Market Georgia  
Community Foundation for Greater Atlanta, Inc.  
Community Health interfaith Partners  
Community of College Park  
Concerned Black Clergy  
DeKalb County Board of Health  
DeKalb County Government  
Diabetes Community Action Coalition, Inc.  
Emory Fuqua Center for Late Life Depression  
Emory Healthcare  
Emory University - Partners for Equity in Child and Adolescent Health

Emory University – Urban Health Initiative  
Enterprise Community Partners  
Families First, Inc.  
Friends of Refugees  
Fulton County Government  
Fulton and DeKalb Hospital Authority  
Gateway Center  
Georgia Alliance for Health Literacy  
Georgia Center for Nonprofits  
Georgia Department of Public Health  
Georgia Global Health Alliance  
Georgia Health Policy Center  
Georgia Higher Arts and Technology Training Institute  
Georgia Institute of Technology  
Georgia Organics  
Georgia Primary Care Association  
Georgia State University  
Georgia Supportive Housing Association  
Georgia Watch  
Get Georgia Reading  
Global Dialogues  
Grady Health System  
Health Equity Advocacy & Resource Center  
Health Management Associates  
Health Promotion Action Coalition, Inc  
Hillside  
Historic Westside Gardens Atl, Inc  
I Can Be The Change  
Insure Georgia  
Jesse Parker Williams Foundation  
Jesus Set the Captive Free  
Kaiser Permanente of Georgia  
Ladybug for Girls Foundation, Inc.  
Legacy Community Housing Corporation

Live Living International Foundation  
Marcus Autism Center  
Mental Health America of Georgia  
Metro Atlanta Urban Farm  
Metropolitan Counseling  
Midtown Assistance Center  
Morehouse School of Medicine  
Muni Cares, Inc.  
Oakhurst Medical Centers  
Odyssey Family Counseling Center  
One Talent Inc.  
Open Hand Atlanta  
Our House  
Partnership for Southern Equity  
Perkins & Will  
Piedmont Healthcare  
Resurgia Health Solutions  
Rimidi, Inc  
RiteAid Pharmacy  
Saint Joseph's Health System/Mercy Care  
Saving Our Sons & Sisters International  
Shepherd Center, Inc.  
SK Collaborative  
South Fulton Human Services Coalition  
Southside Medical Center  
Susan G. Komen Greater Atlanta  
TechBridge  
TQIntelligence, Inc.  
Truly Living Well  
United Way of Greater Atlanta  
Veterans Empowerment Organization  
Visiting Nurse Health System  
Voices of Georgia's Children  
Wellcare  
Wellstar Health System  
West End Medical Center Inc.





# UPCOMING

**Atlanta Regional Commission Health Equity Forum: June 27, 2019**

**ARCHI Quarterly Breakfast: September 11, 2019**  
Registration will be available at [www.archicollaborative.org](http://www.archicollaborative.org)