



ARCHI Quarterly Breakfast

December 11, 2019
8:00 a.m. – 10:00 a.m.

WELCOME & INTRODUCTIONS

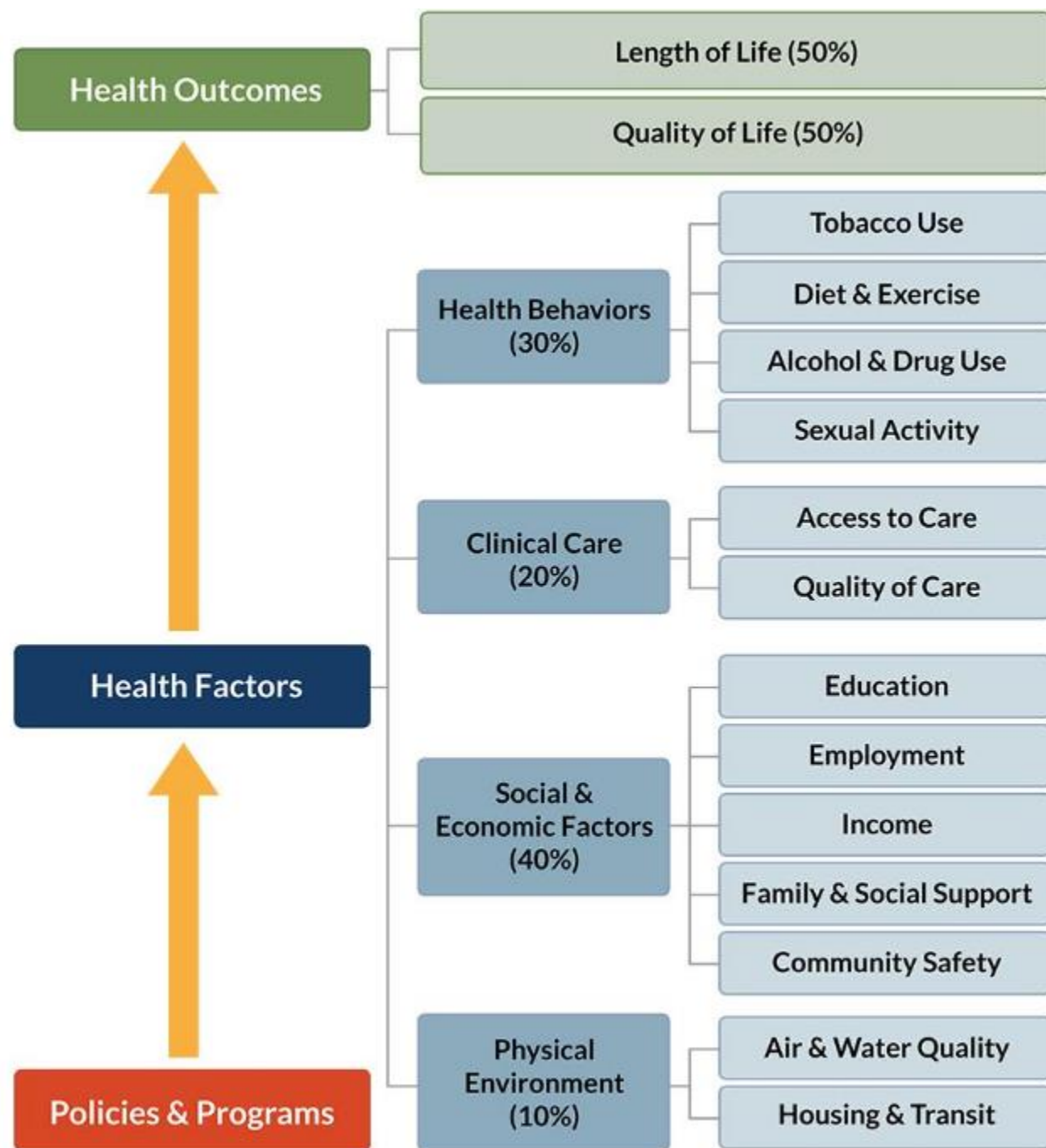
Evonne Yancey, ARCHI Steering Committee

AGENDA

- **Complex Care – Overview**
- **Patient's Perspective**
- **Georgia's Work in Complex Care**
- **Commitment to Moving Upstream**
- **Legislative Updates and Issues**
- **Updates & announcements**

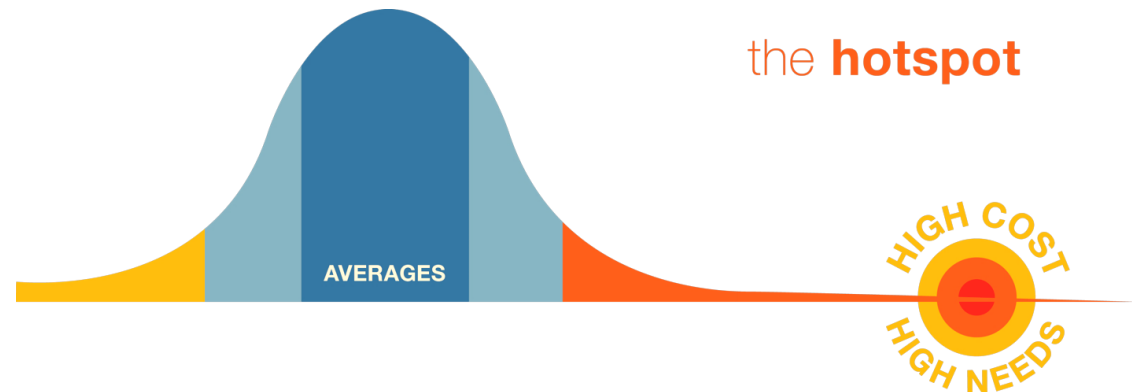


WHAT IS COMPLEX CARE?



WHAT IS COMPLEX CARE?

Complex care is a **person-centered approach** to address the needs of people who experience combinations of **medical, behavioral health, and social challenges** that result in **extreme patterns of healthcare utilization and cost**



WHO DOES COMPLEX CARE SERVE?

Complex care seeks to improve the health and well-being of a relatively small, heterogeneous group of people who repeatedly cycle through multiple health care, social service, and other systems **but do not derive lasting benefit**



ATLANTA TRANSFORMATION SCENARIO



FAMILY PATHWAYS



EXPAND INSURANCE



INNOVATION FUNDS



GLOBAL BUDGETING



CARE COORDINATION



HEALTHY LIFESTYLES



CAPTURE AND REINVEST

Health Equity

NATIONAL CENTER FOR COMPLEX AND SOCIAL NEEDS

- National Center for Complex Health and Social Needs
 - Regional Complex Care Convenings
 - Twitter: @natlcomplexcare
 - LinkedIn
 - Sign up for our newsletter!
- Blueprint for Complex Care
- Camden Coalition of Healthcare Providers



PATIENT'S PERSPECTIVE

Aisha Williams, Chris 180

Vera Wilson

COMPLEX CARE IN GEORGIA

Tom Andrews, CEO of St. Joseph's Health System

Diana Camacho, Manager, National Community Health

John Hauptert, CEO of Grady Health System

Bobby Jones, President CareSource Georgia

Matthew Moore, President Humana Georgia

Candice Saunders, CEO of WellStar

Shannon Sale, ARCHI Steering Committee Facilitator

OUR SHARED COMMITMENT

Karen Minyard, ARCHI Steering Committee

HOUSING PARTNERS:



Urban Land
Institute



HOSPITAL PARTNERS: **WELLSTAR®**



SAINT JOSEPH'S
Mercy Care Services



MEDICAID AND UPCOMING LEGISLATIVE SESSION

**Laura Colbert, Georgians for a Healthy Future
Matt Hicks, Grady Health System**

ARCHI PARTNERS



Alliant GMCF
American Cancer Society
American Diabetes Association
Arthur M. Blank Family Foundation
Atlanta Bicycle Coalition
Atlanta Community Food Bank
Atlanta Community Health Interfaith Partners
Atlanta Housing Authority
Atlanta Humane Society
Atlanta Neighborhood Development Partnership (ANDP)
Atlanta Regional Commission
Atlanta Relay Bike Share
Atlanta Volunteer Lawyers Foundation
Barnes Healthcare
BlueFlowers.org
CareSource
Carter Center
Charitable Connections
ChildKind
Children's Healthcare of Atlanta
CHRIS Kids, Inc.
Clayton State University, School of Nursing
Club E. Atlanta
Common Market Georgia
Community Foundation for Greater Atlanta, Inc.
Community Health interfaith Partners
Community of College Park
Community of Hospitality, Inc.
Concerned Black Clergy
DeKalb County Board of Health
DeKalb County Government
Diabetes Community Action Coalition, Inc.
Emory Fuqua Center for Late Life Depression
Emory Healthcare
Emory University - Partners for Equity in Child and

Emory University – Urban Health Initiative
Enterprise Community Partners
Families First, Inc.
Friends of Refugees
Fulton County Government
Fulton and DeKalb Hospital Authority
Gateway Center
Georgia Alliance for Health Literacy
Georgia Center for Nonprofits
Georgia Department of Public Health
Georgia Global Health Alliance
Georgia Health Policy Center
Georgia Higher Arts and Technology Training Institute
Georgia Institute of Technology
Georgia Organics
Georgia Primary Care Association
Georgia State University
Georgia Supportive Housing Association
Georgia Watch
Get Georgia Reading
Global Dialogues
Grady Health System
Health Equity Advocacy & Resource Center
Health Management Associates
Health Promotion Action Coalition, Inc
Hillside
Historic Westside Gardens Atl, Inc
Humana
I Can Be The Change
Insure Georgia
Jesse Parker Williams Foundation
Jesus Set the Captive Free
Kaiser Permanente of Georgia
Ladybug for Girls Foundation, Inc.
Legacy Community Housing Corporation

Live Living International Foundation
Marcus Autism Center
Mental Health America of Georgia
Metro Atlanta Urban Farm
Metropolitan Counseling
Midtown Assistance Center
Morehouse School of Medicine
Muni Cares, Inc.
Oakhurst Medical Centers
Odyssey Family Counseling Center
One Talent Inc.
Open Hand Atlanta
Our House
Partnership for Southern Equity
Perkins & Will
Piedmont Healthcare
Resurgia Health Solutions
Rimidi, Inc
RiteAid Pharmacy
Saint Joseph's Health System/Mercy Care
Saving Our Sons & Sisters International
Shepherd Center, Inc.
SK Collaborative
South Fulton Human Services Coalition
Southside Medical Center
Susan G. Komen Greater Atlanta
TechBridge
TQIntelligence, Inc.
Truly Living Well
United Way of Greater Atlanta
Veterans Empowerment Organization
Visiting Nurse Health System
Voices of Georgia's Children
Wellcare
Wellstar Health System
West End Medical Center Inc.

MARK YOUR CALENDAR:

January 14th Healthcare Unscrambled

7:30-9:30am Georgia Freight Depot

<https://healthyfuturega.org/>

March 11th- ARCHI Quarterly Breakfast

8:00-10:00 Commerce Club

archicollaborative.org

January 24th – GBPI's Insights 2020 Conference

GBPI's Insights 2020 conference—Friday, Jan. 24th.

[Event information and tickets available here.](#)

