



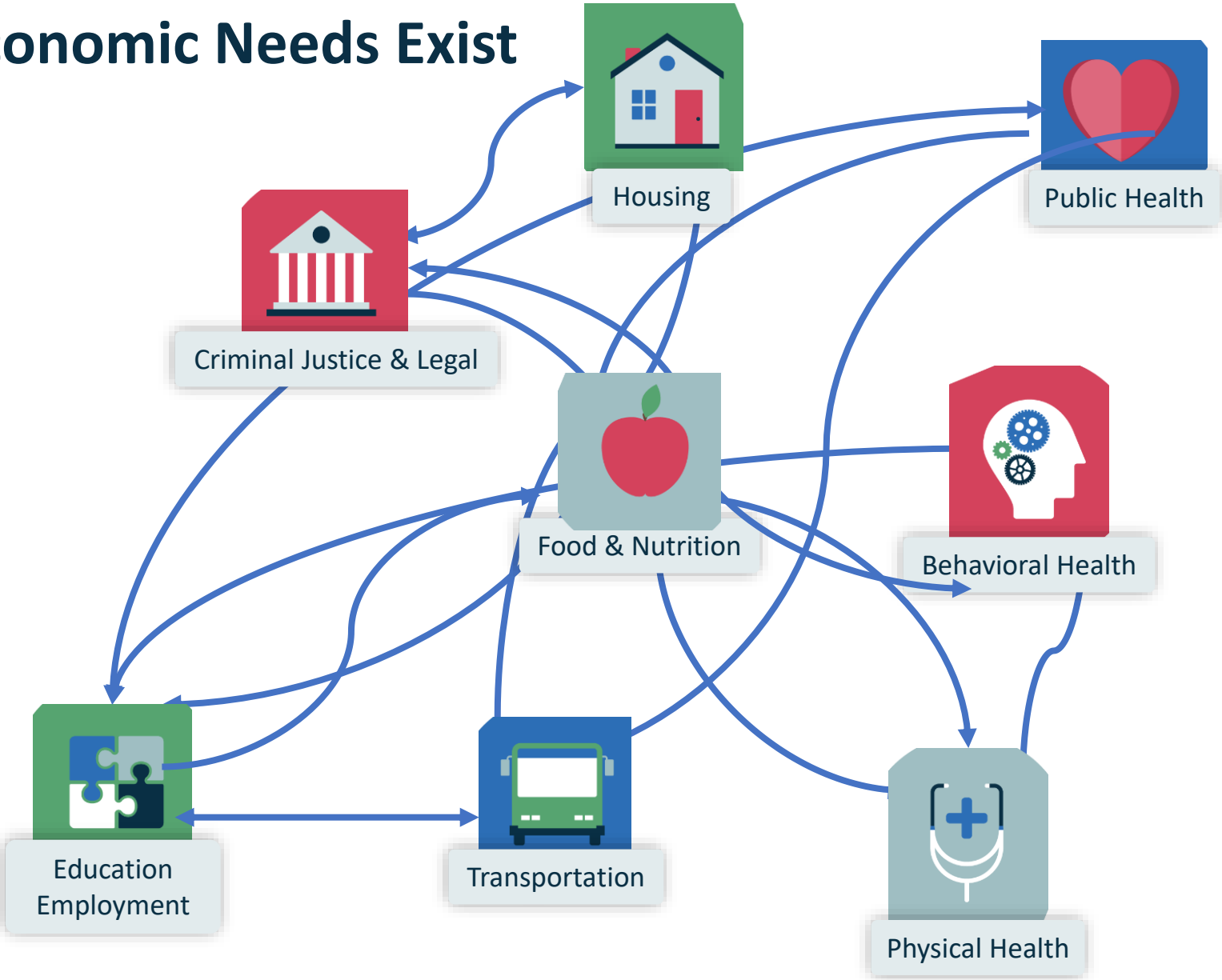
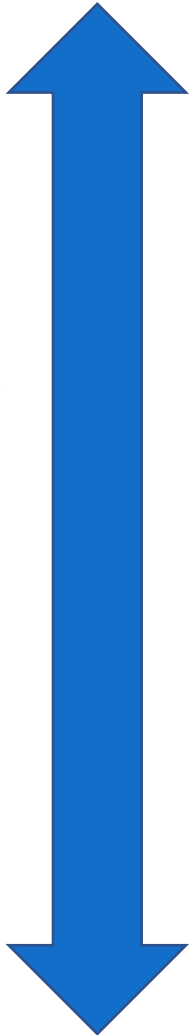
# WHERE ATLANTA IS NOW

December 3, 2020

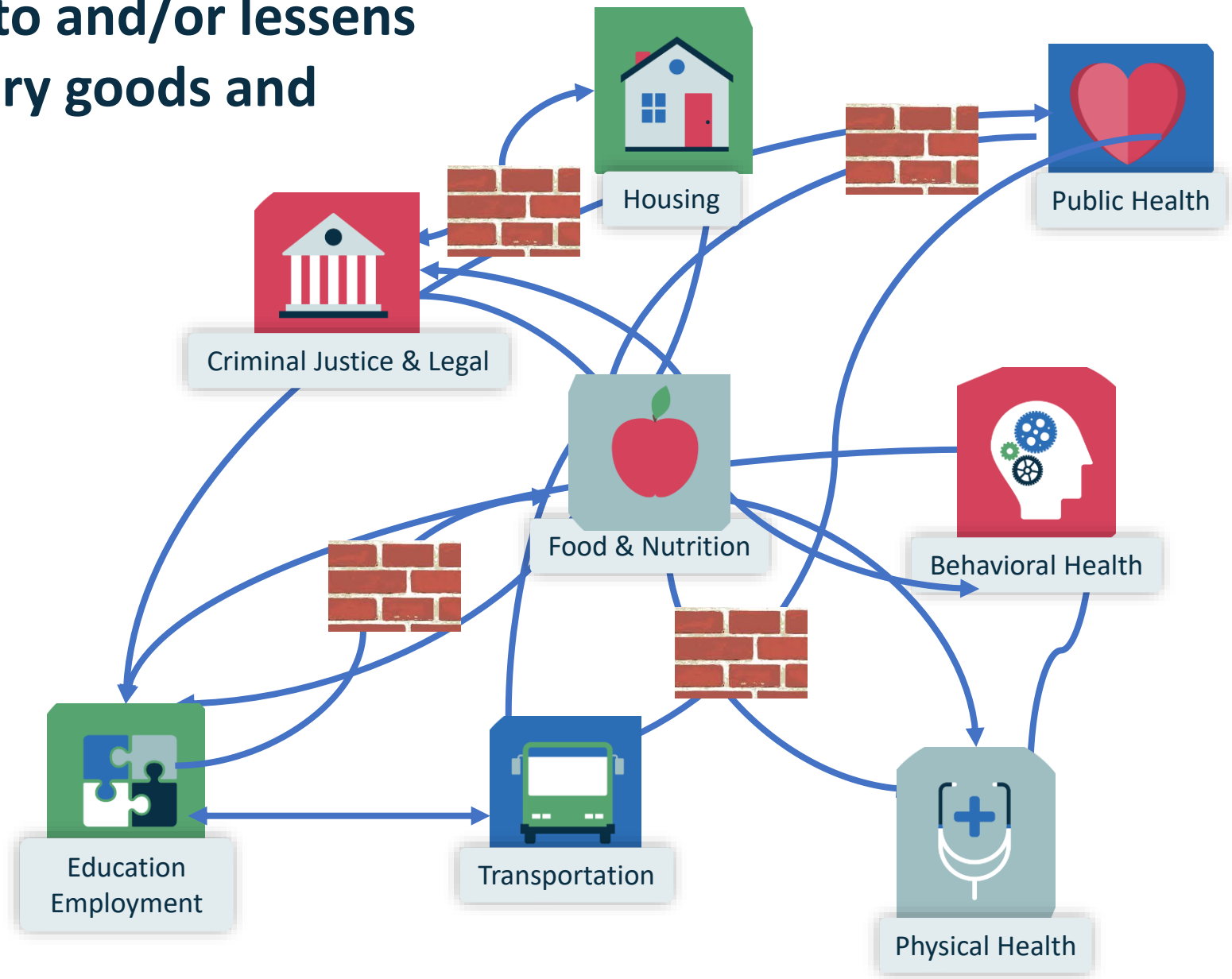


# Social, Health and Economic Needs Exist in a Dynamic System

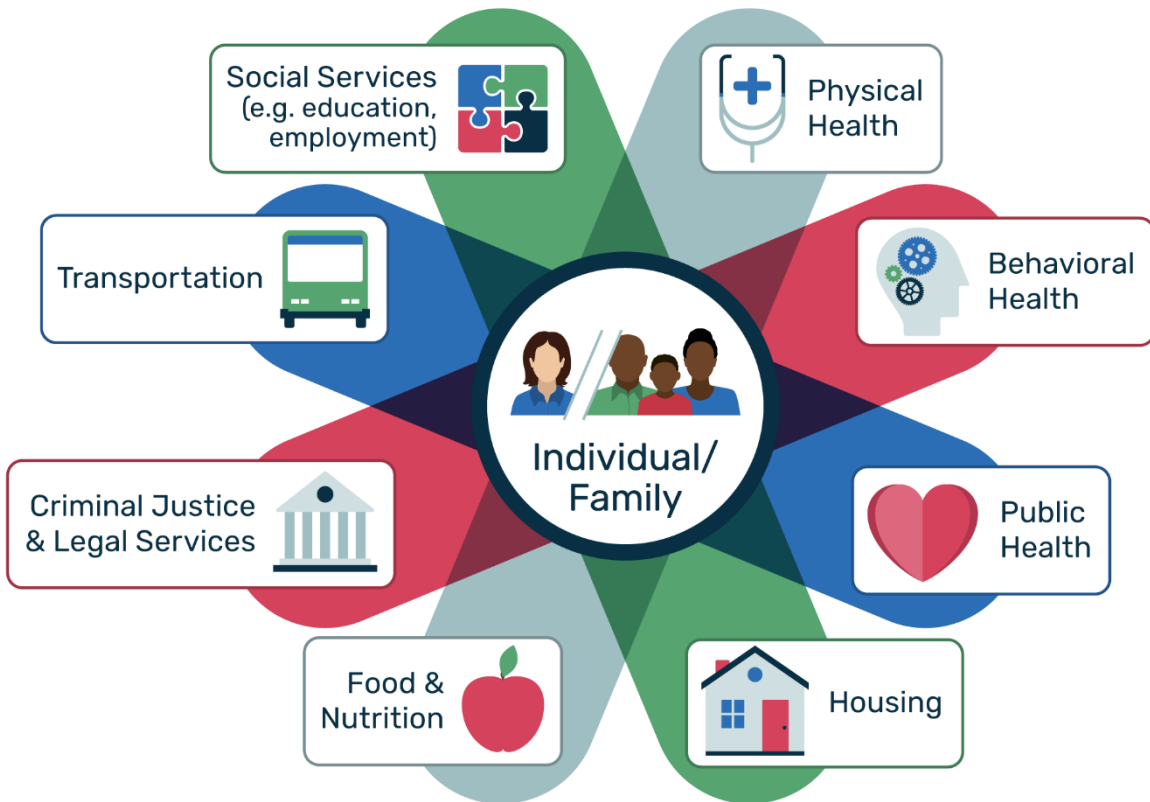
Opportunity  
Health  
Wealth  
Safety



Racism blocks access to and/or lessens the quality of necessary goods and services



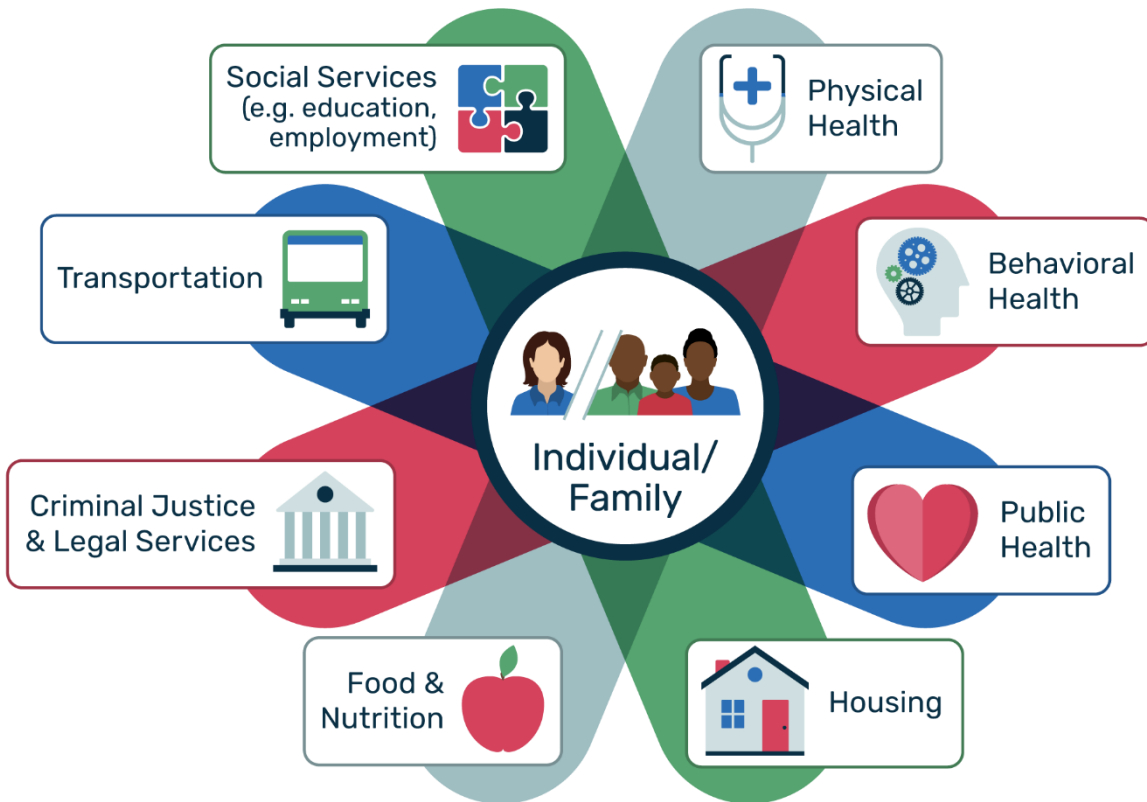
# HOW WILL WE BE DIFFERENT?



- **PROCESS:** Invert the Burden-put people at the center of the system of care
- **PIPELINE:** Increase the supply
- **POLICY:** Advocate for policy that disproportionately invests in people and communities of color



# HOW WILL WE BE DIFFERENT?



- **PROCESS:** Invert the Burden-put people at the center of the system of care
- **PIPELINE:** Increase supply
- **POLICY:** Advocate for policy that disproportionately invests in people and communities of color

The work can begin when we shift our **PRIORITIES**

# AGENDA

2020 Metro Atlanta Speaks – Mike Carnathan

- Reflections on 2020 & What's Ahead-

Alex Camardelle, Lesley Grady & Kyle Waide

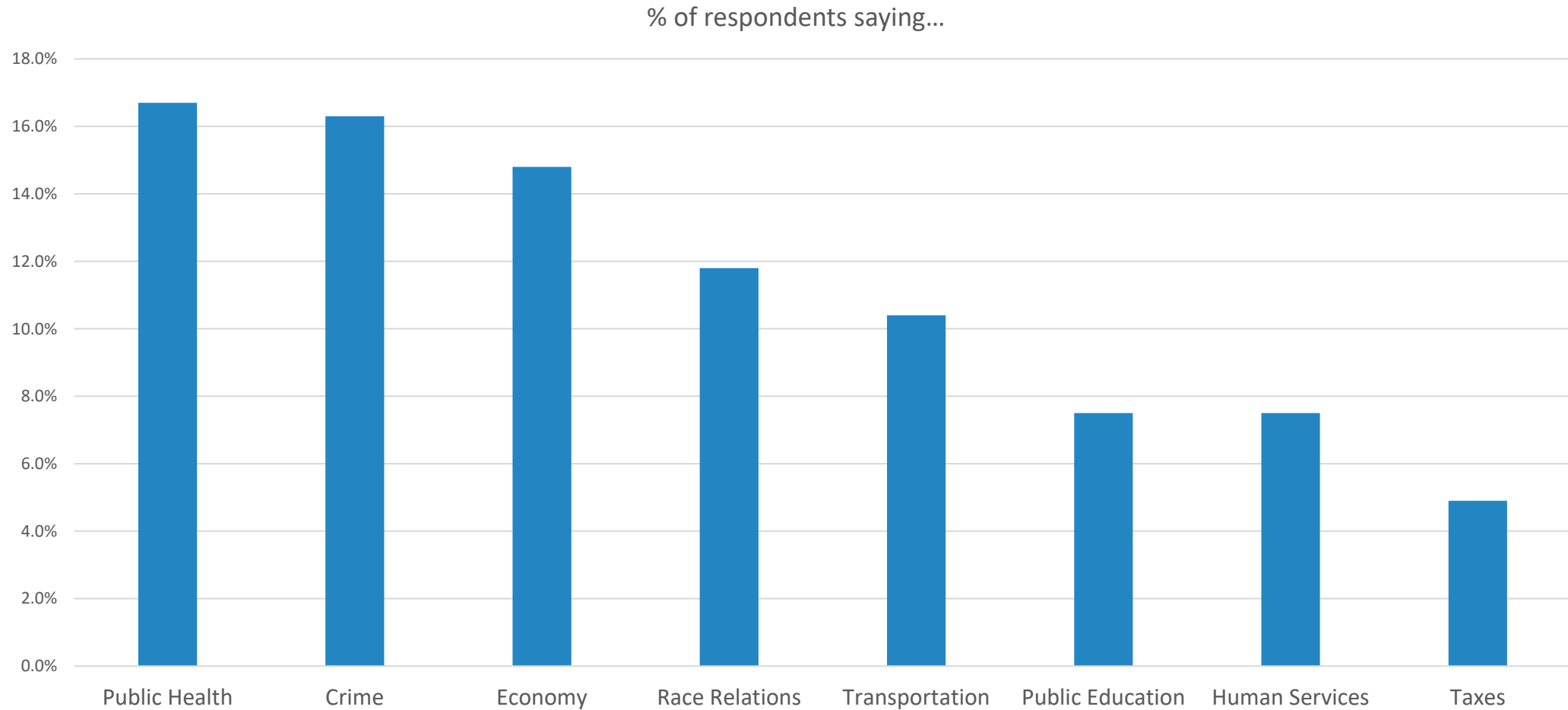
- Q & A Discussion
- Insight Data Tool – Neighborhood Nexus
- Announcements & Adjourn



# **METRO ATLANTA SPEAKS**

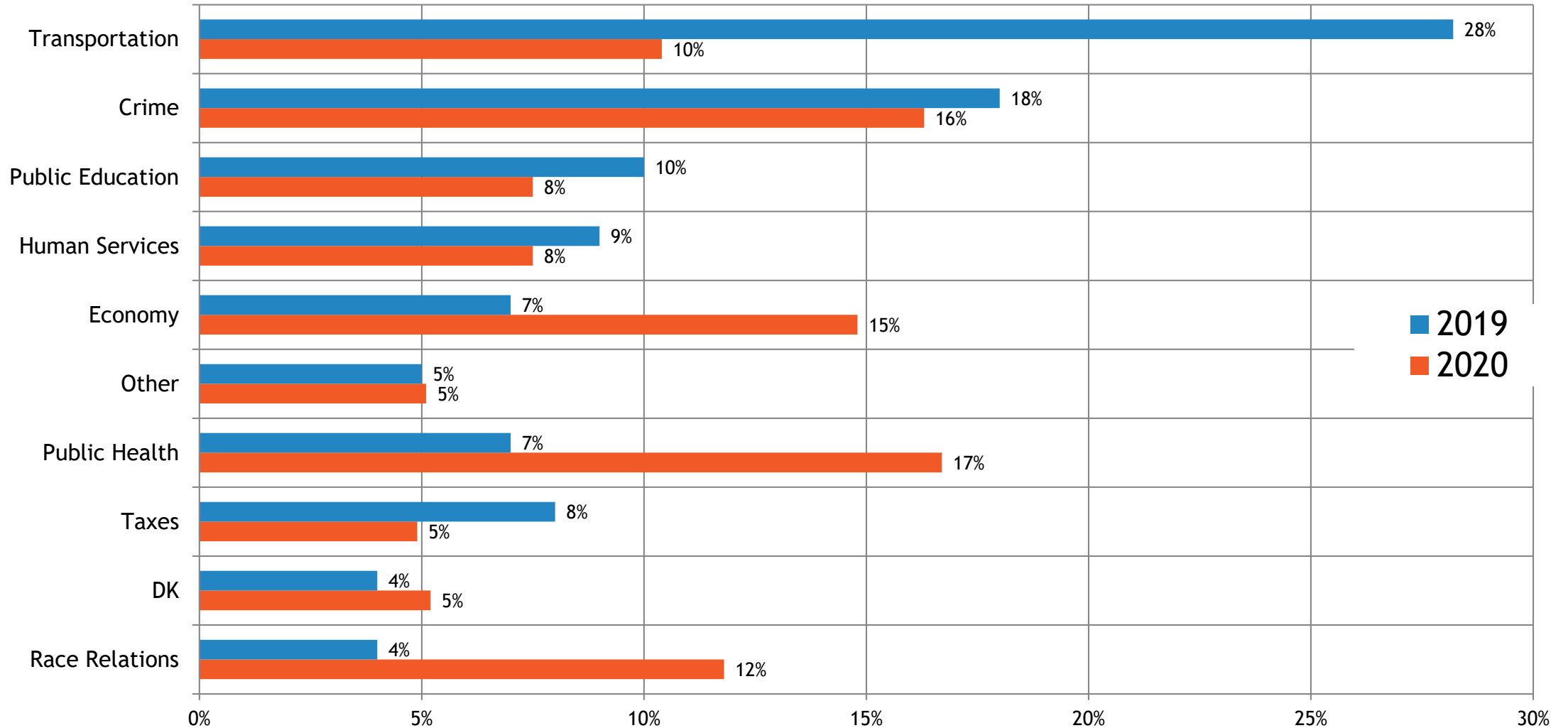
**Mike Carnathan, Director of Research & Analytics  
Atlanta Regional Commission**

# What is the Biggest Problem Facing The Region?

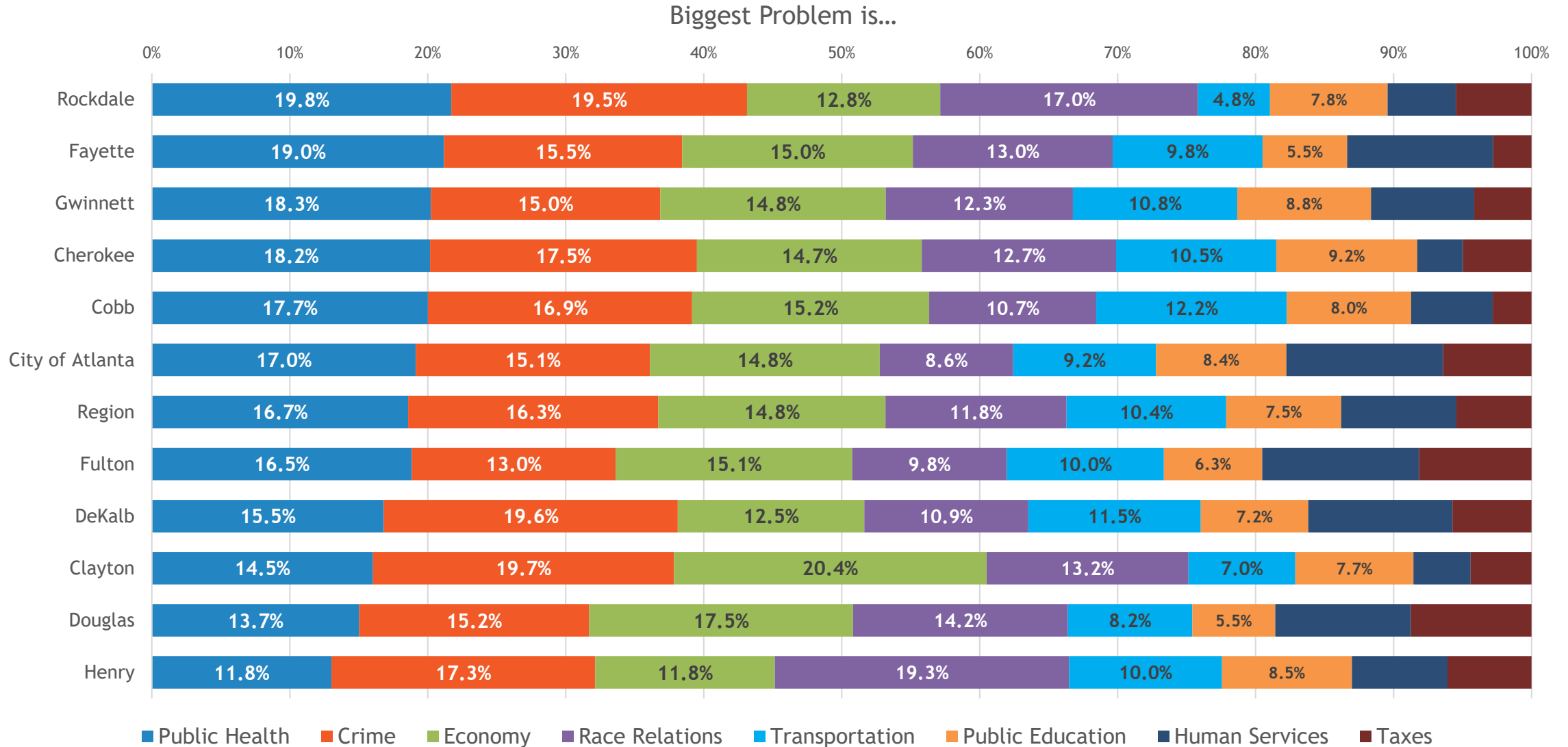




# Yes, 2020 is Different

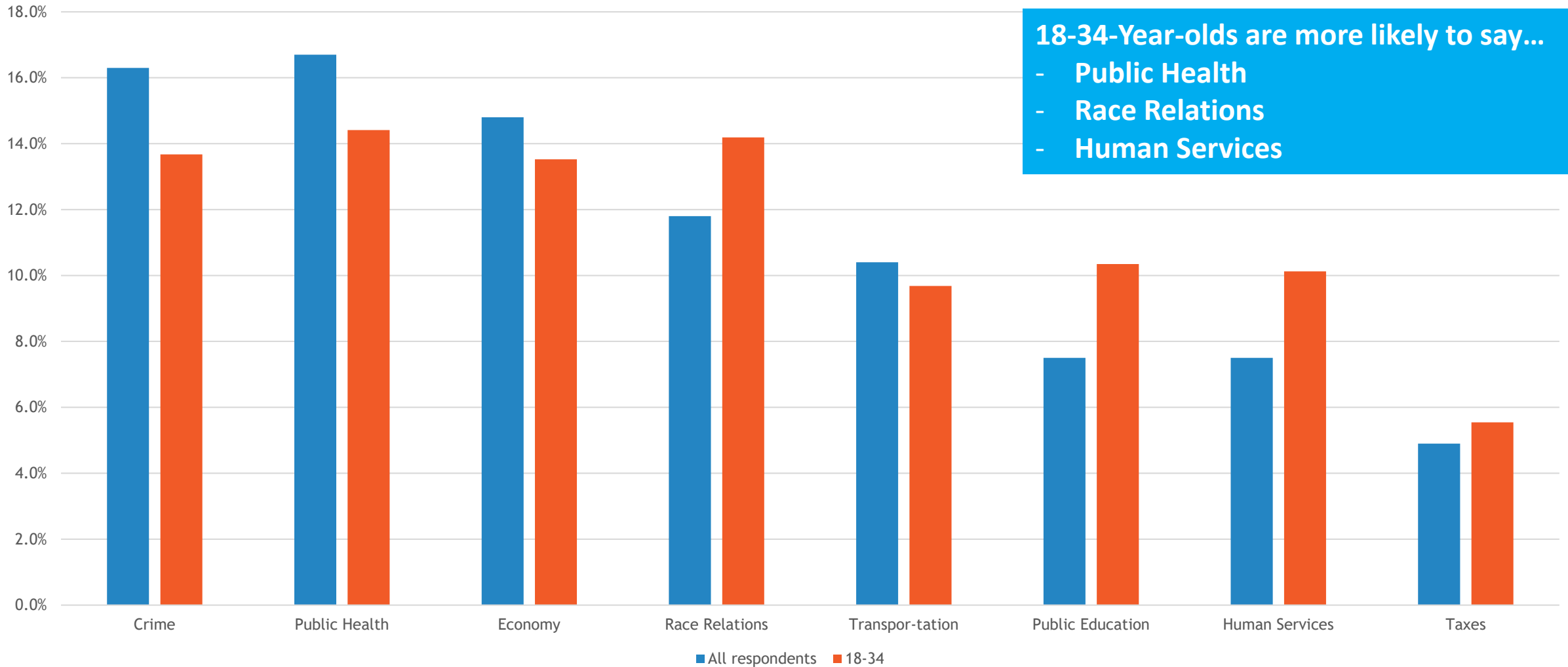


# Big Differences Among Our Jurisdictions



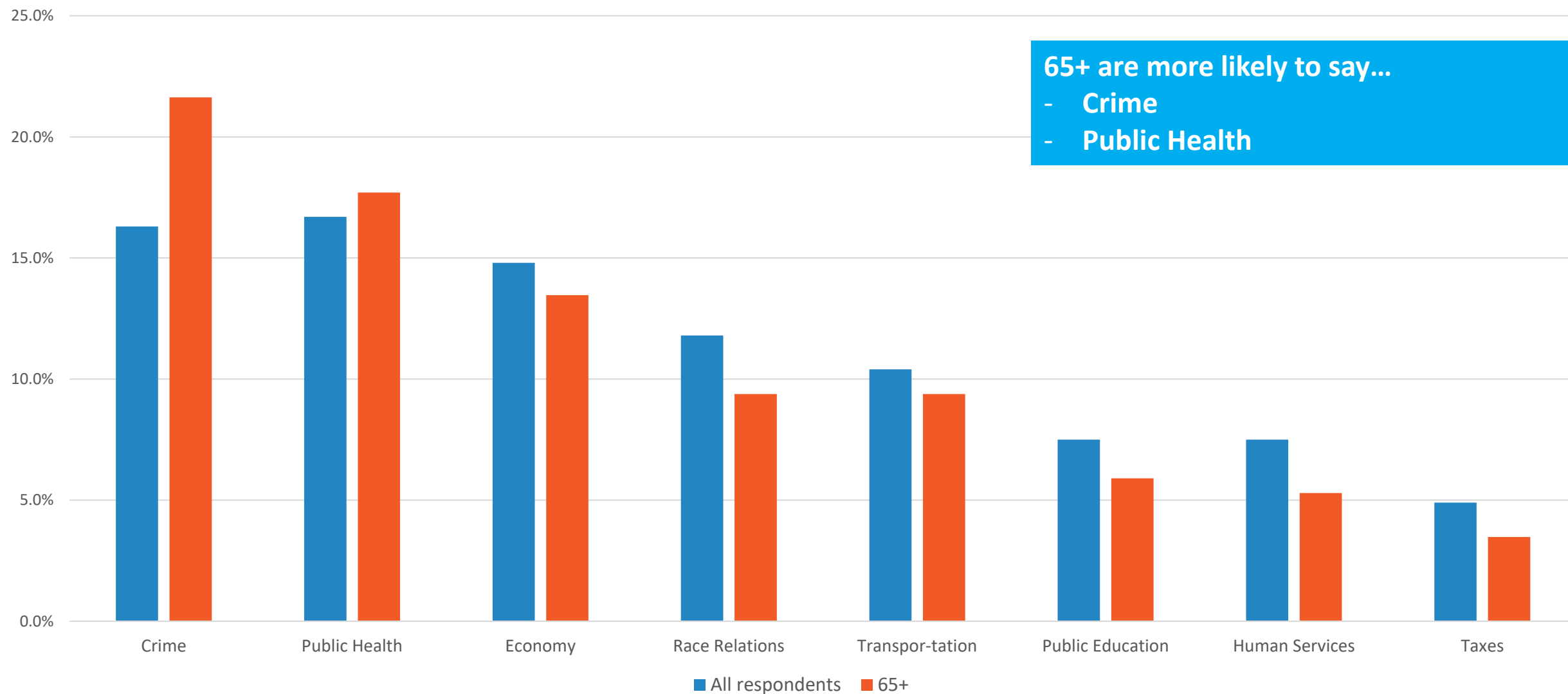
# Big Differences Among Age Groups Too... (18-34)

How 18-34 Year-Olds Answered the “Biggest Problem” Question



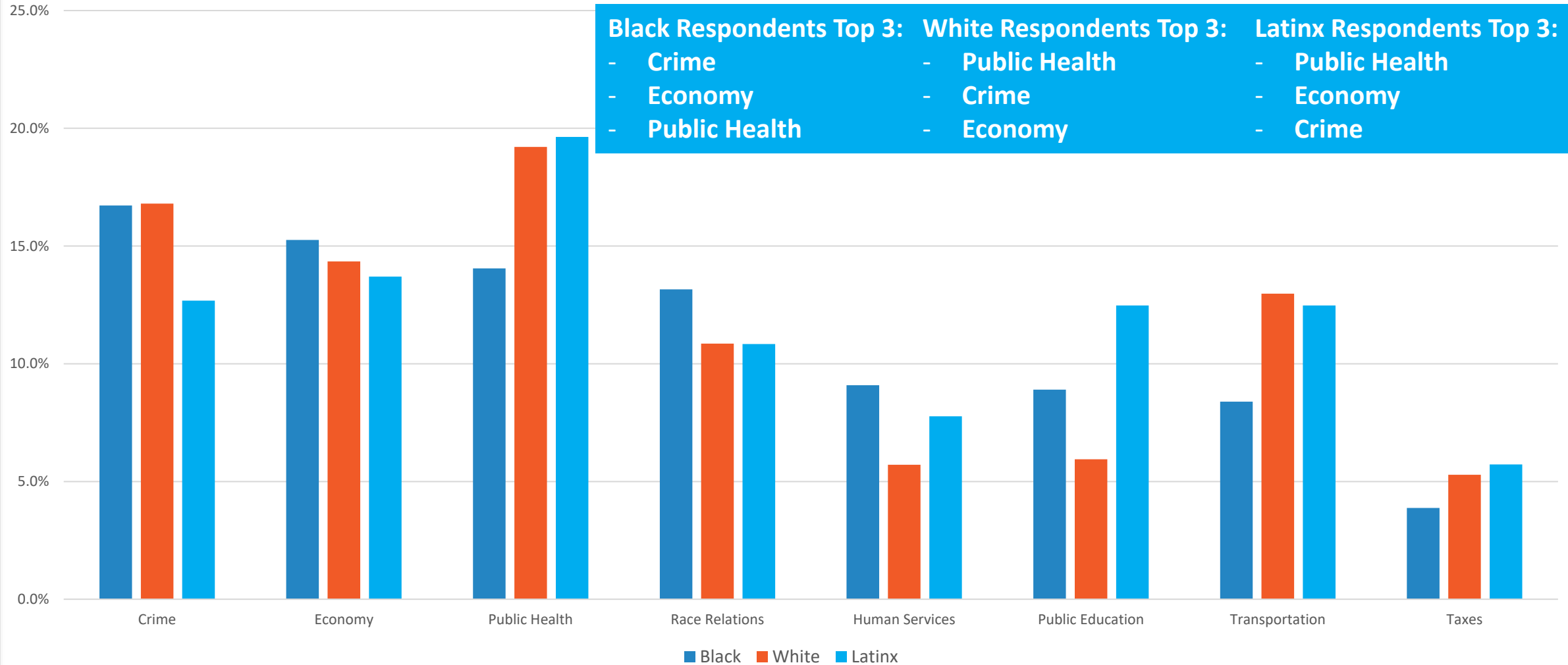
# Big Differences Among Age Groups Too... (65+)

How 65+ Year-Olds Answered the “Biggest Problem” Question



# And, Of Course, Big Differences Among Races

The Biggest Problem, By Race and Ethnicity

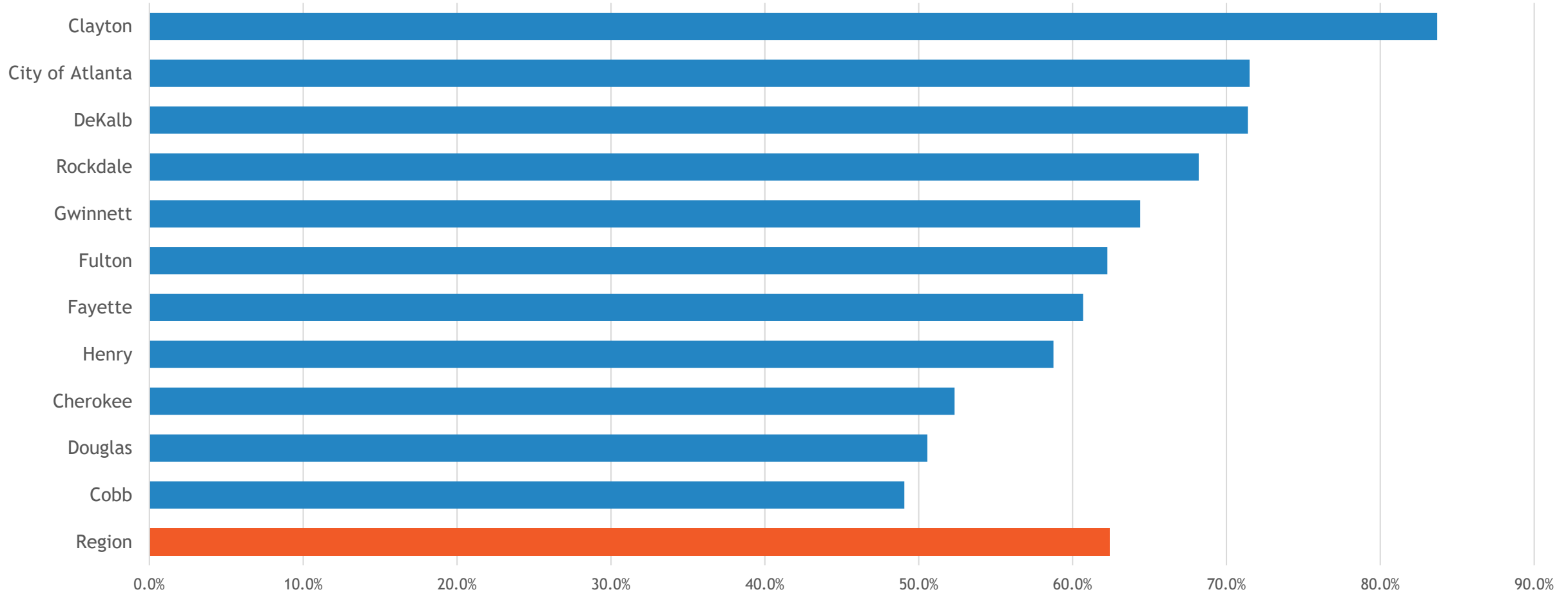


## Key Takeaways From the “Biggest Problem” Question

- For the first time since 2013, **something other than “Transportation”** was indicated as the biggest problem facing the region (“Public Health”)
- After years of plunging in importance based on the biggest problem question, **“Economy” returned to the Top Three** as the pandemic continues to take a toll on respondents' pocketbooks.
- **“Crime”** was the top issue in four jurisdictions, and was, by far, **the biggest issue for older age cohorts.**
- Big differences in how survey participants responded **based on age and race, with persons of color and younger age cohorts more likely to indicate that “Race Relations” was a big problem.**
- Big differences in how survey participants responded based on location, too. **For example, residents of Douglas, Henry and Rockdale are more likely to indicate “Race Relations” as the biggest problem.**

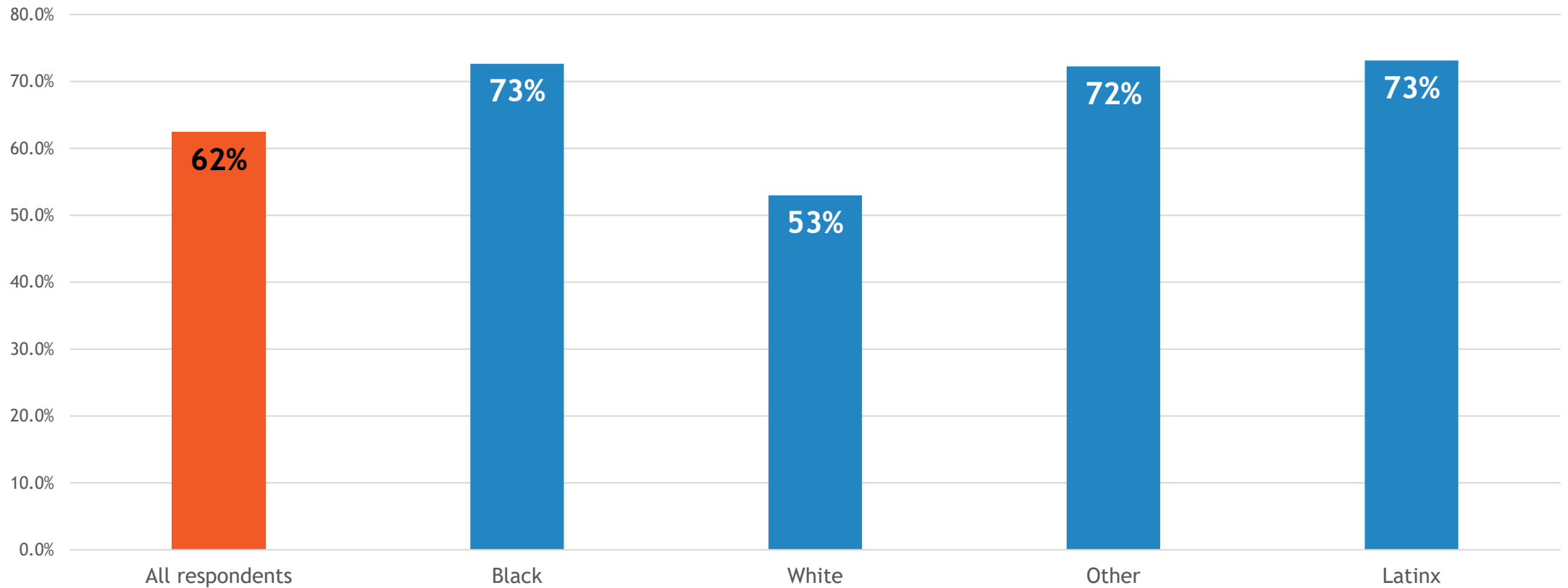
# Majority of the Region's Residents Experienced Significant Employment Impacts

% Respondents Who Lost Job, Was Furloughed, Experienced Cuts in Pay or Hours



# These Impacts Aren't Equitably Distributed Across Race/Ethnicity, However...

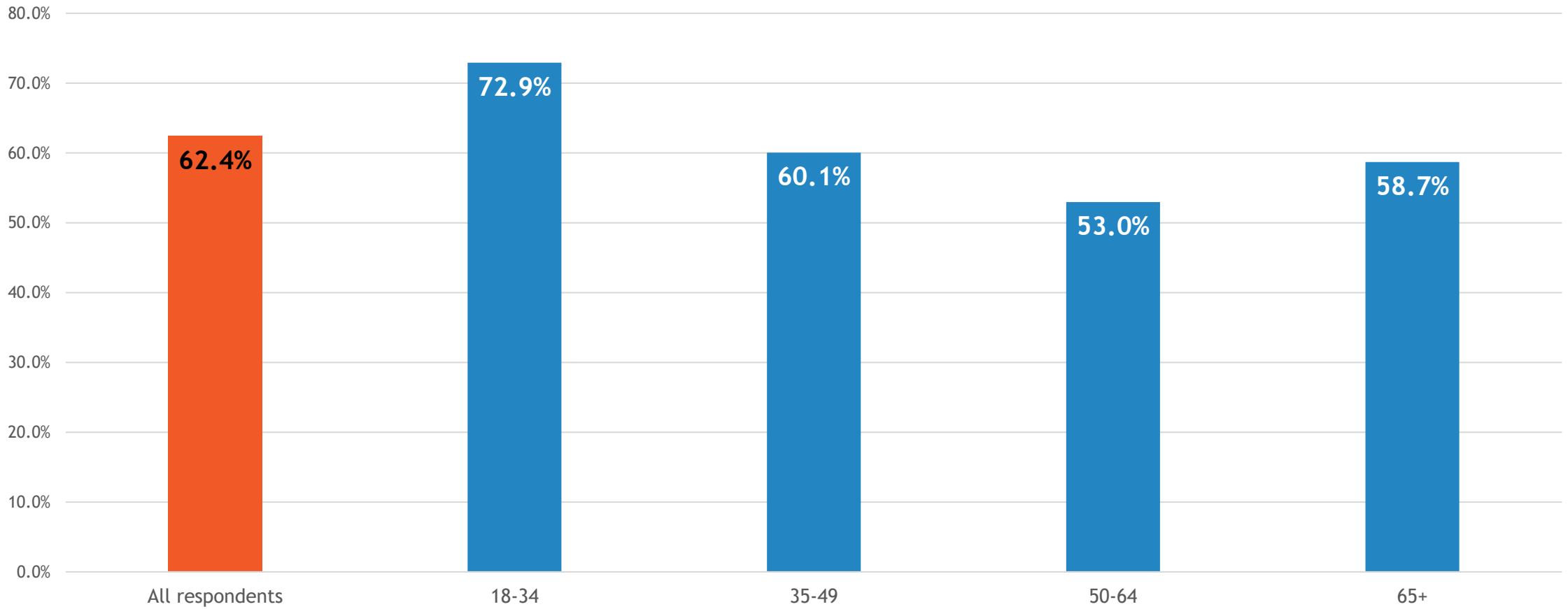
% Respondents Who Lost Job, Was Furloughed, Experienced Cuts in Pay or Hours





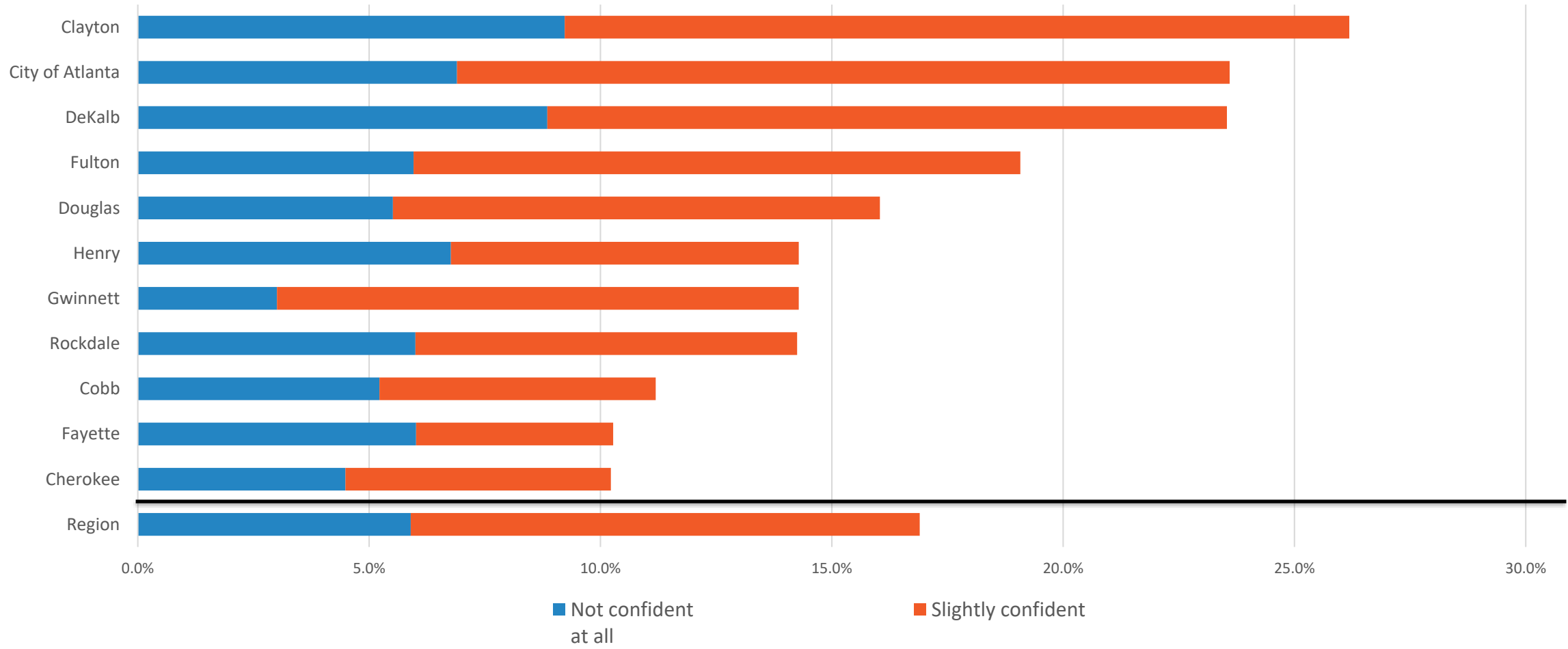
## ...Nor By Age

% Respondents Who Lost Job, Was Furloughed, Experienced Cuts in Pay or Hours

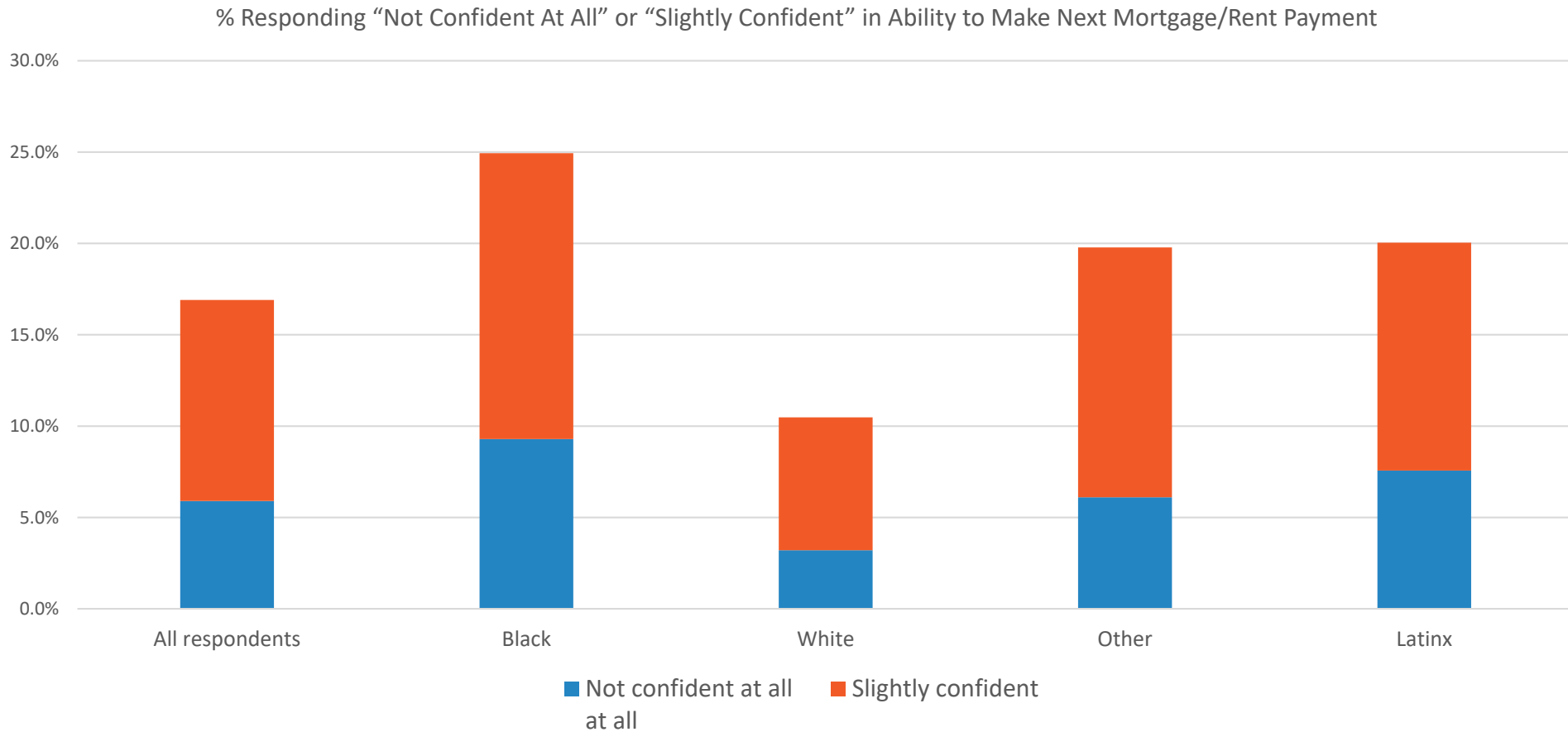


# Economic Pain Spreading To Housing...

% Responding “Not Confident At All” or “Slightly Confident” in Ability to Make Next Mortgage/Rent Payment

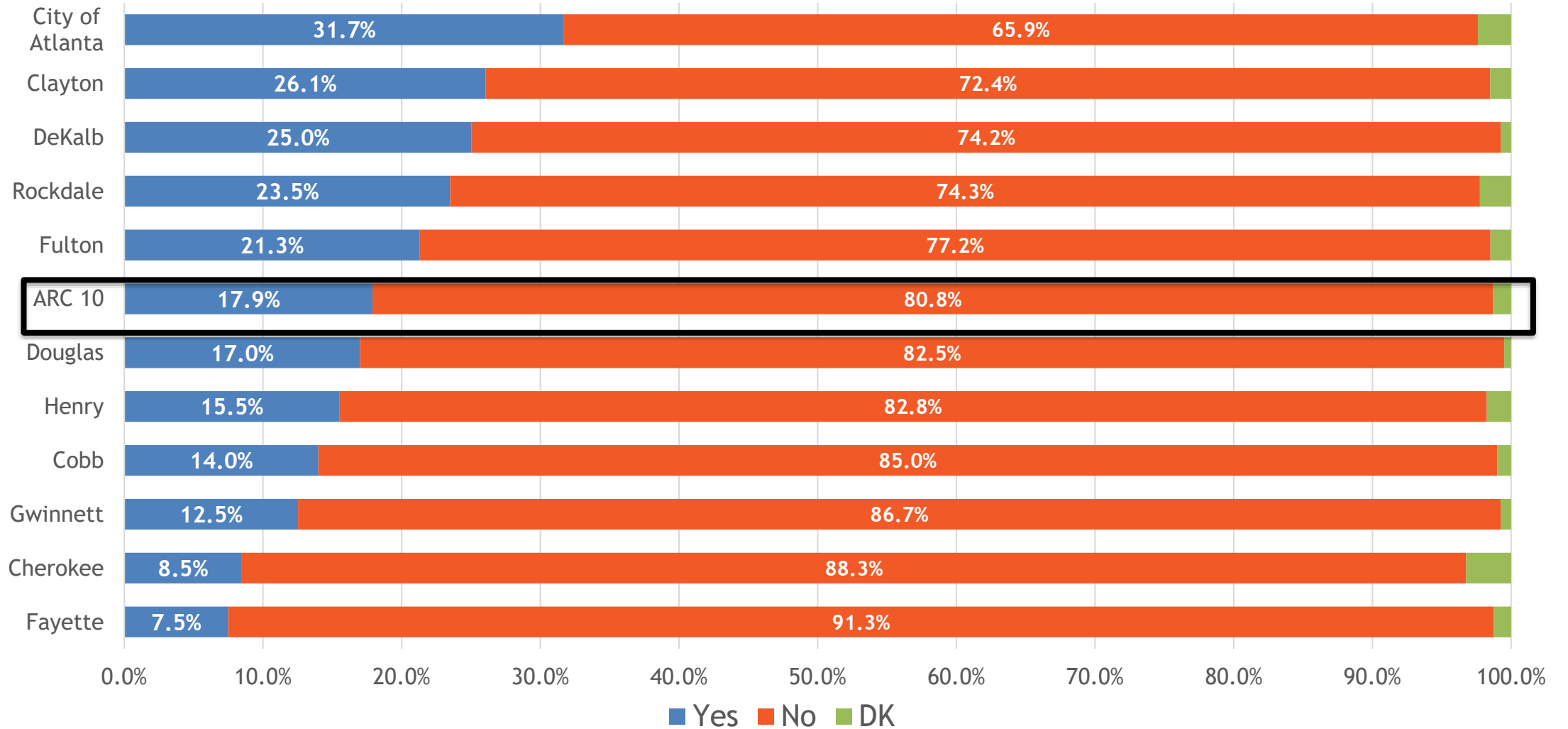


## ...And, Again, Big Differences Among Race/Ethnicity...

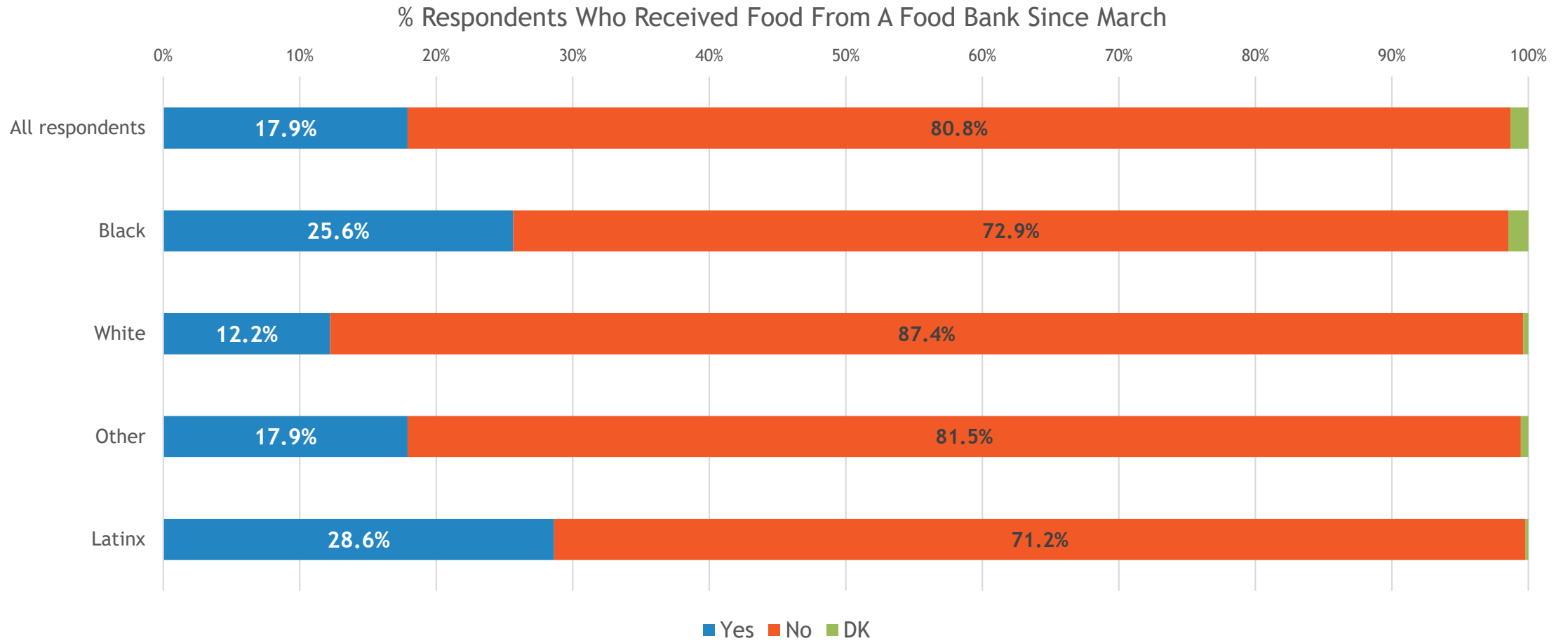


# Significant Responses of Food Insecurity

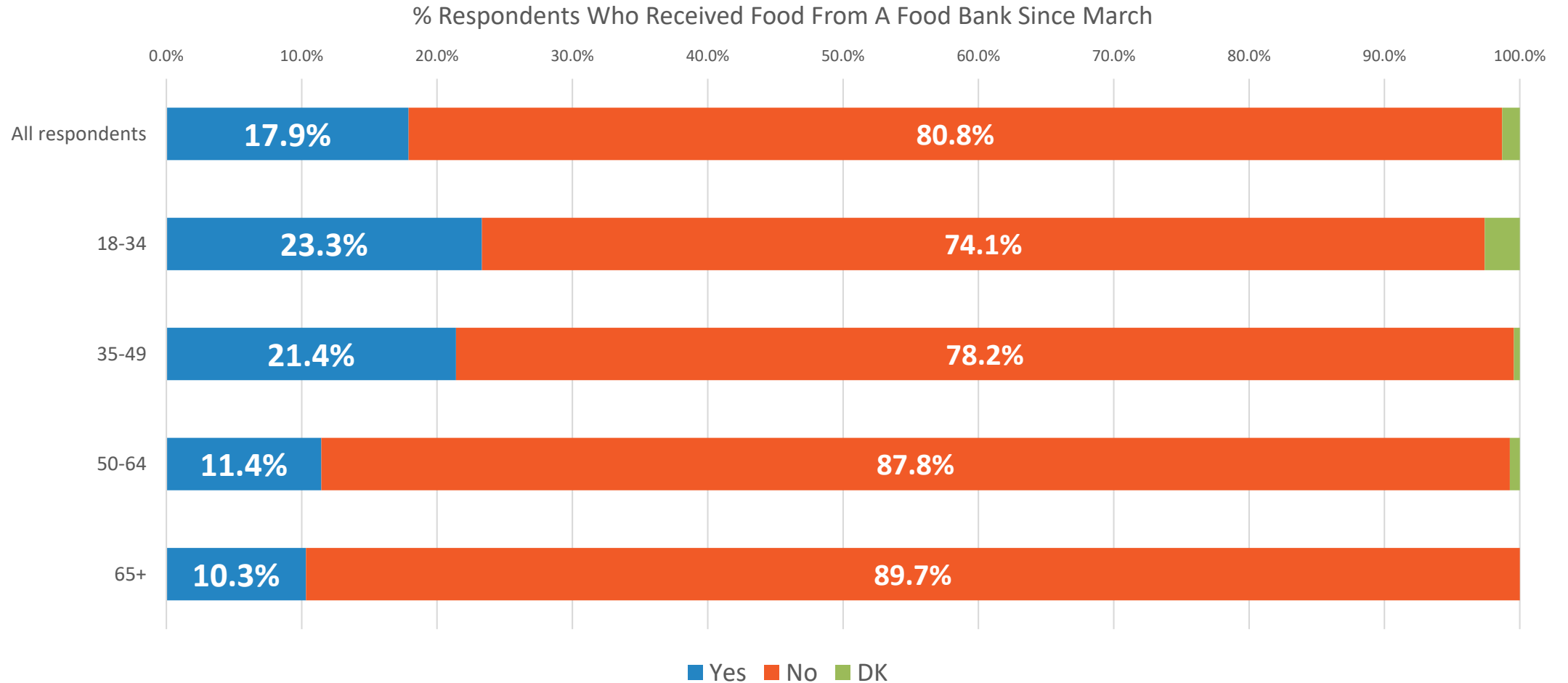
% Respondents Who Received Food From A Food Bank Since March



# Again, Persons of Color More Likely To Indicate Struggles with Food Insecurity

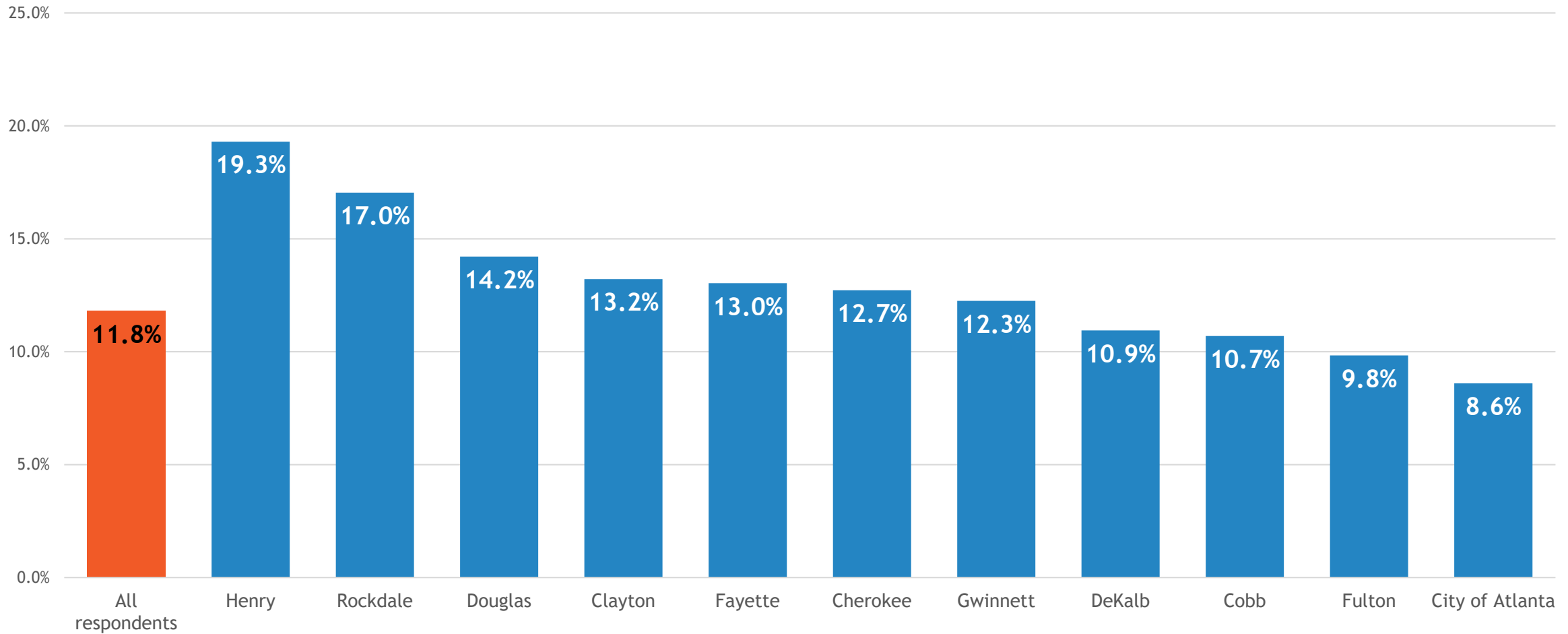


# And, Again, Younger Cohorts Struggle More With Food Insecurity



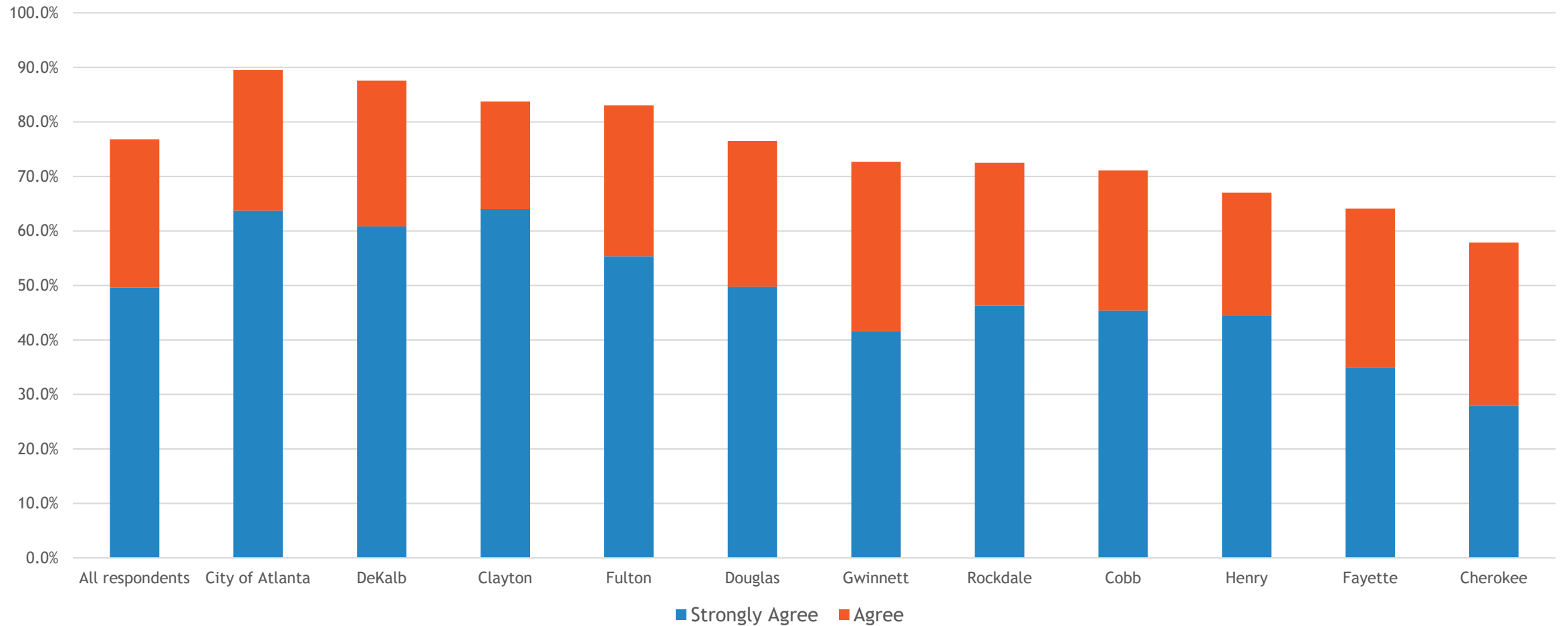
# Perceptions Race Relations And Overall Awareness

% Responding “Race Relations” As Region’s Biggest Problems



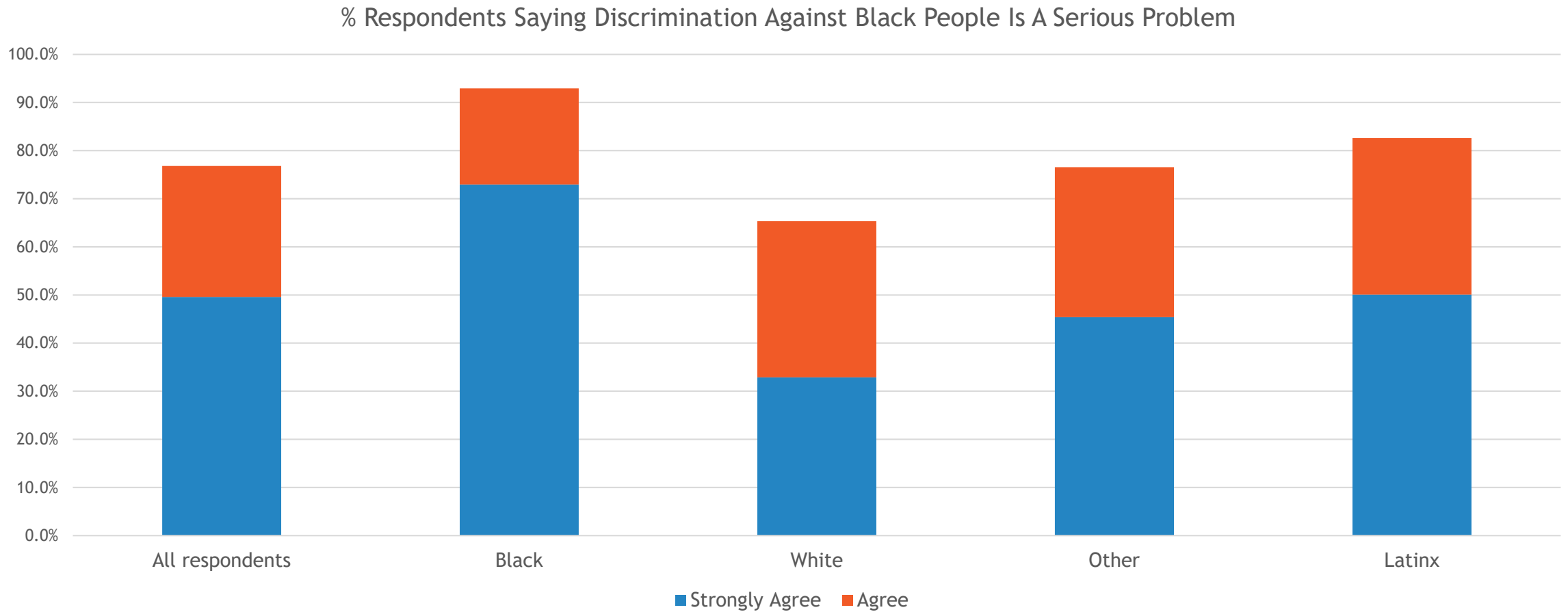
# Majority of Respondents Agree That Discrimination Against Black People Is A Serious Problem

% Respondents Saying Discrimination Against Black People Is A Serious Problem



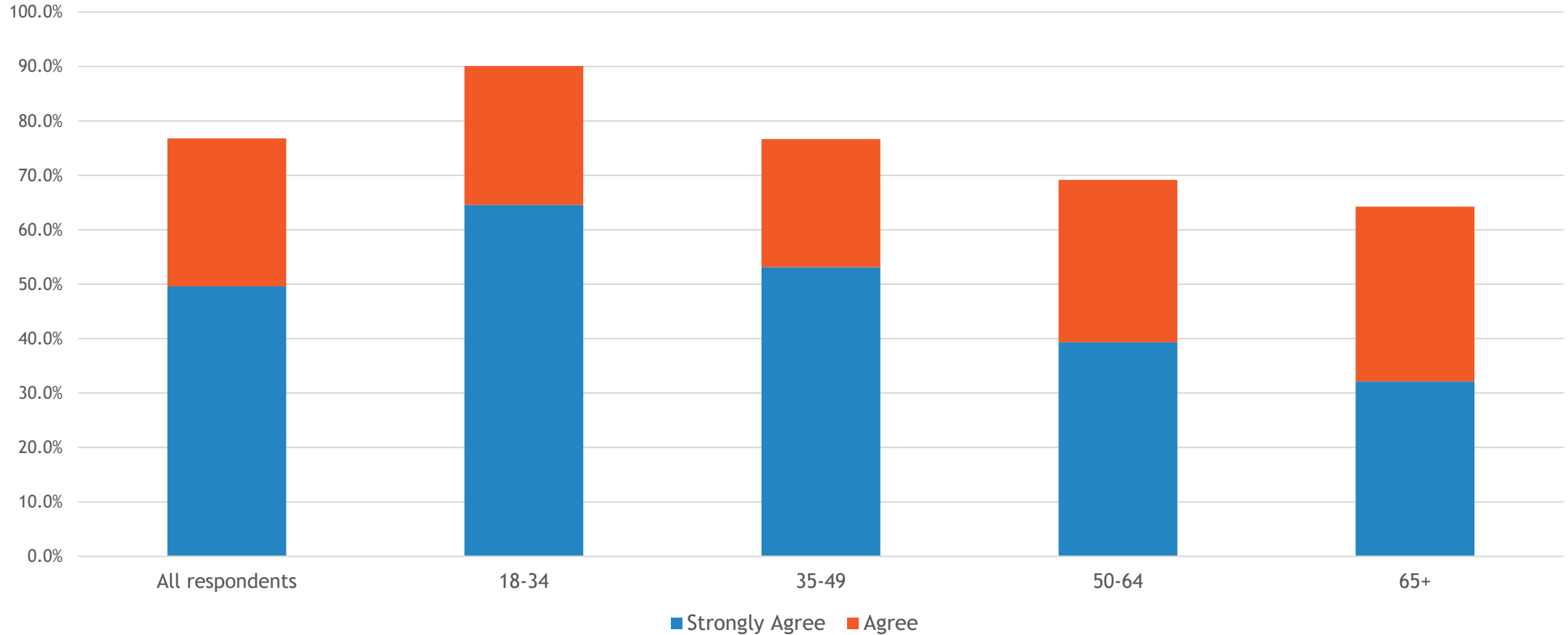


# Persons of Color More Likely To See Discrimination as a Problem



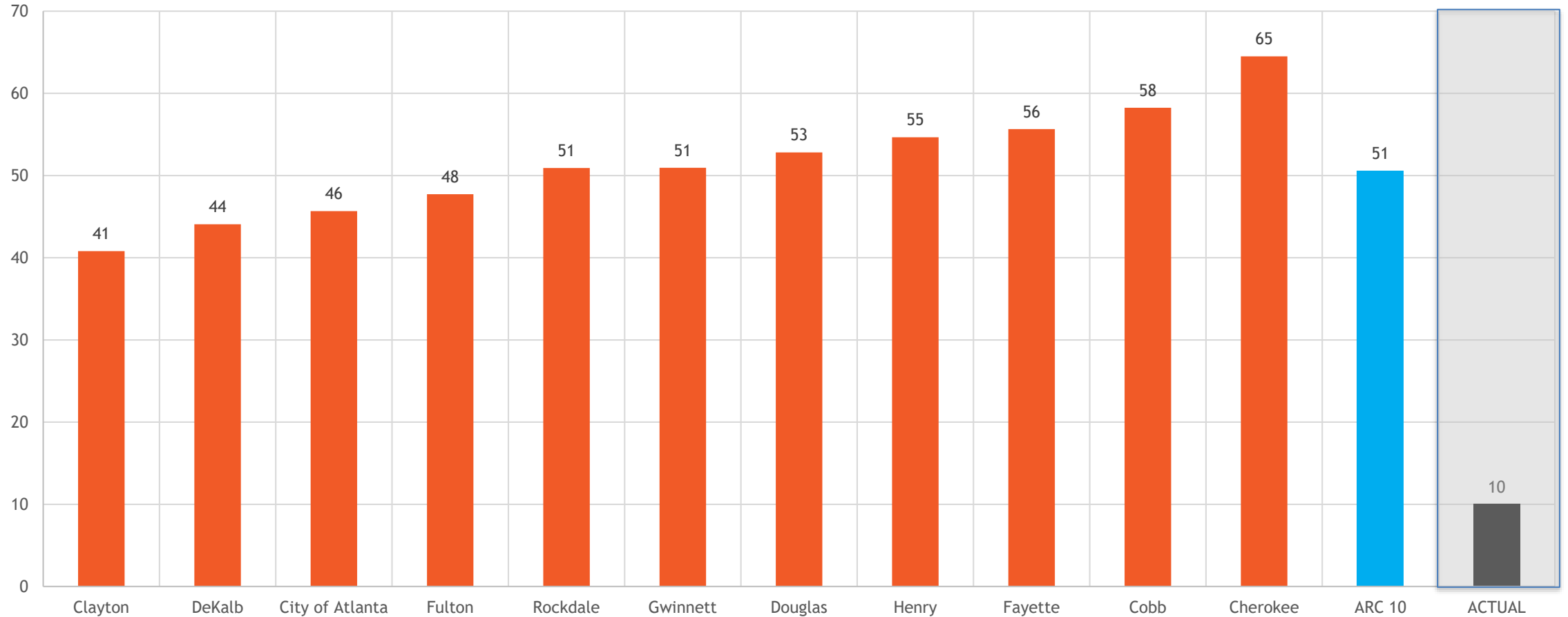
# Younger Cohorts Significantly More Likely To Say Discrimination is a Serious Problem

% Respondents Saying Discrimination Against Black People Is A Serious Problem



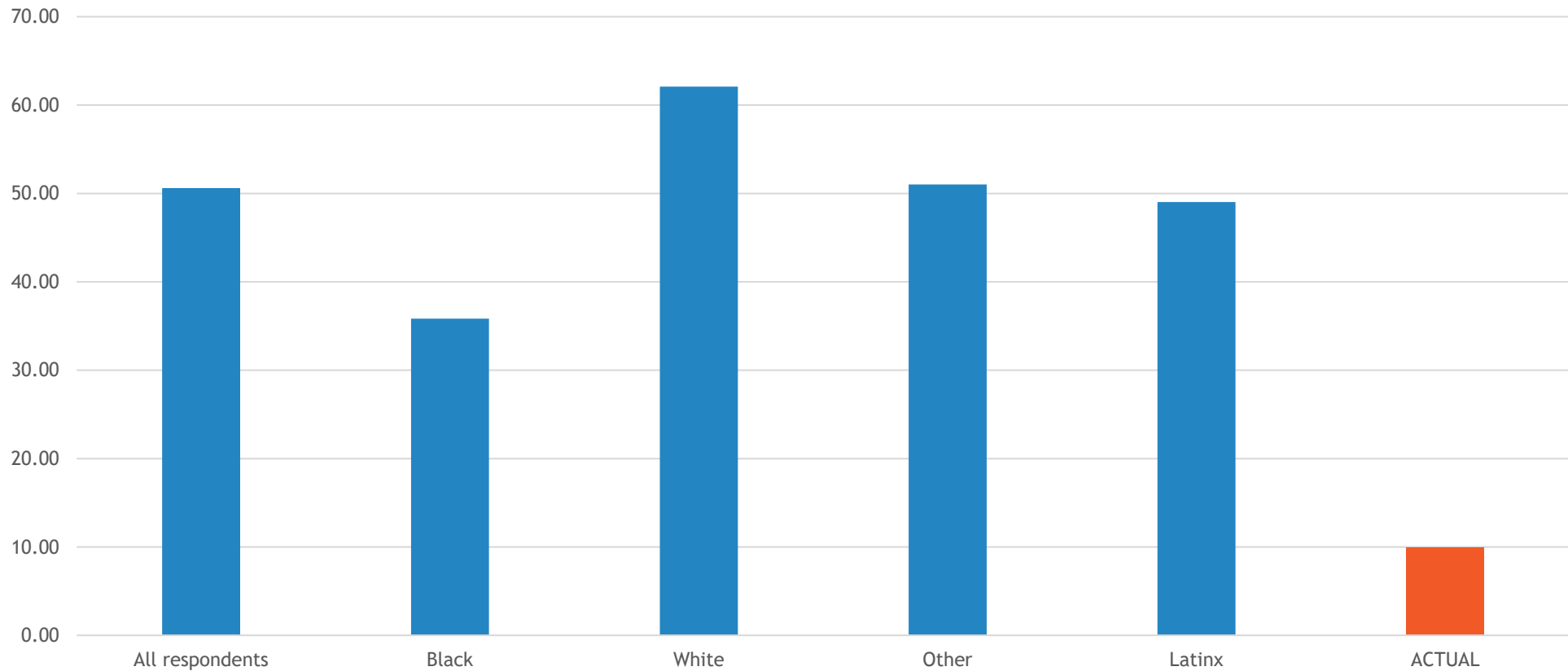
# A Lot of Education Needed About Racial Wealth Gap...

If a typical white family in the United States has 100 units of overall wealth, how many units of overall wealth does the typical Black family have?



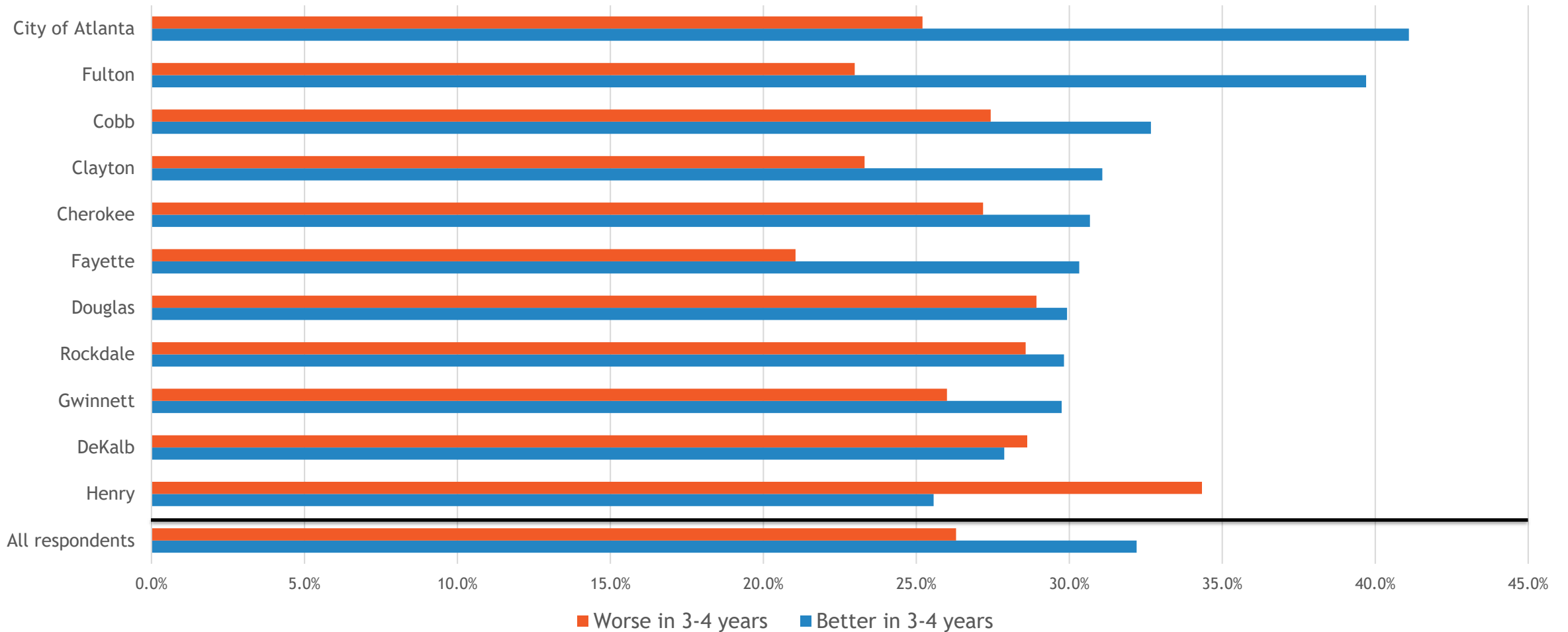
# ... Across ALL Race/Ethnic Groups, But Persons of Color Come the Closest To Understanding the Racial Wealth Gap

If a typical white family in the United States has 100 units of overall wealth, how many units of overall wealth does the typical Black family have?



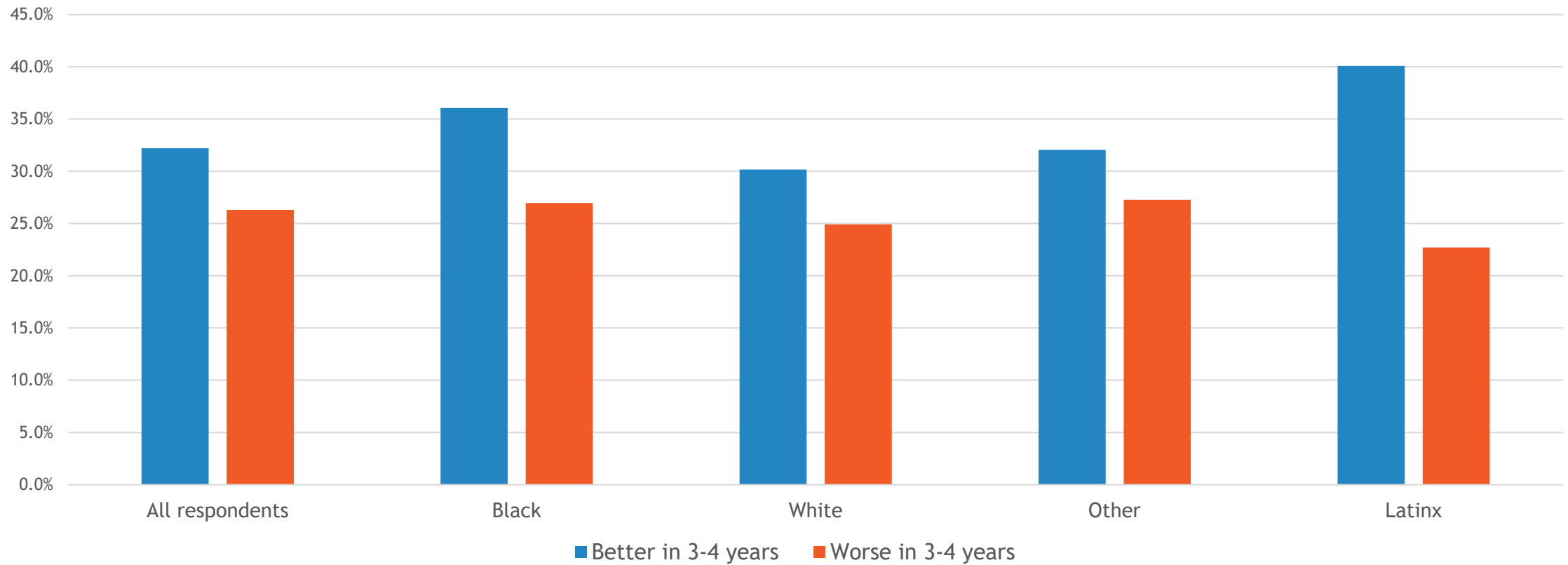
# The Future? We're Still Pretty Optimistic

Looking Ahead 3-4 Years, Will Things in Metro Atlanta Be Better, Worse or the Same  
(% Responding Better or Worse)



# Persons of Color More Optimistic

Looking Ahead 3-4 Years, Will Things in Metro Atlanta Be Better, Worse or the Same  
(% Responding Better or Worse)



## Tableau Dashboard

**TOPICS**

-  COVID & Personal Life
-  COVID & Community Life
-  Racial Equity
-  Transportation
-  Local Economy
-  Housing & Affordability
-  Workforce Development
-  Civic Engagement
-  The Future
-  Amenities & Quality of Life
-  Neighborhood Change
-  Other Regional Issues

You can browse topics using the top buttons as well as tabs in the white top bar. If you click on any of the topic, then questions will appear on yellow tabs across the top of your page.

[Methodology](#)



The Atlanta Regional Commission (ARC), in collaboration with community partners, has conducted the **Metro Atlanta Speaks Survey (MAS)** annually (since 2013) to take the pulse of metro Atlanta residents and inform the region's planning and decision-making. The survey, now in its eighth year, is the largest of its kind in the Atlanta region. MAS offers a statistically valid snapshot of residents across the Atlanta area on various topics including transportation, the economy, housing and affordability, amenities and quality of life, civic engagement, and other emerging regional issues. This year, an obvious topical focus was the COVID-19 pandemic.

### How to Use the Dashboard

This Metro Atlanta Speaks Survey (MAS) Dashboard offers an interactive view of the results for questions asked since 2016. It is organized by topic area, then by questions within each topic area. Above you can see the available topic area tabs in white, stretching out to the right of the screen. This year (2020), with the onset of the pandemic, MAS focused on resident perceptions of and reactions to COVID-19. The first three tabs that you see, from left to right, present the results for questions asked in the 2020 survey. Subsequent tabs document the results, for questions in prior years as available, by topic area.

If you click on any of the topic area tabs, the questions related to that selected topic area will appear on yellow tabs across the top of your page. Then, click on any yellow tab to view results for that given question. You can then change the year and subset to look at different groups of respondents, highlight specific answers or answer groupings by clicking on elements of the legend, and hover over the charts to see specific result values appear (in pop-up windows).

One critical note for use of the dashboard: *every question (either topical or demographic) does not have data in each survey year.* The reason? many questions (topical and demographic) were not asked in every survey year. Results are only selectable, for any given question, for the years in which that question was asked. As an example, we did not ask any questions about COVID-19 prior to this year (2020) ... and as such, you cannot request, for those questions, data for any year except 2020.

For more detail on methodology and results, check out the content on the **Metro Atlanta Speaks Survey** webpage: <https://atlantaregional.org/plans-reports/metro-atlanta-speaks-survey-report/>. Also, there is a separate methodology tab available on this dashboard.

A final note: data values displayed in the dashboard for any given question and geography may not *exactly* match (due to rounding) the data values shown for that same given question and geography in other printed reports or charts of results.



Atlanta Regional Commission

[https://public.tableau.com/profile/arcresearchanalytics#!/vizhome/mas\\_all\\_year\\_viz\\_16023008658750/Introduction](https://public.tableau.com/profile/arcresearchanalytics#!/vizhome/mas_all_year_viz_16023008658750/Introduction)

## Metro Atlanta Speaks Survey

POSTED IN: [ATLANTA REGION](#) [PLANS & REPORTS](#)

### An Eye on the Key Trends in Metro Atlanta

Each year, ARC and its community partners conduct the Metro Atlanta Speaks public opinion survey to take the pulse of metro Atlanta residents and help guide the region's planning and decision-making.

The survey, which began in 2013, is the largest of its kind in the Atlanta region. It offers a snapshot of residents' views on a range of critical issues such as transportation, the economy, education, aging, and neighborhood quality of life. Metro Atlanta Speaks currently covers a 13-county region and is statistically significant to the county level, as well as for the City of Atlanta.

The 2019 survey offered some fresh insights.



Share or Print This Page





## Metro Atlanta Speaks

Highlights of the Metro Atlanta Speaks survey results.



### Monday Mapday: Focus on Older Atlantans

By Layla Bellows | July 29th,  
2019 | Categories: Age and  
Generations, Metro Atlanta  
Speaks, Monday Mapday,  
Population | Tags: 65+, older  
adults, seniors

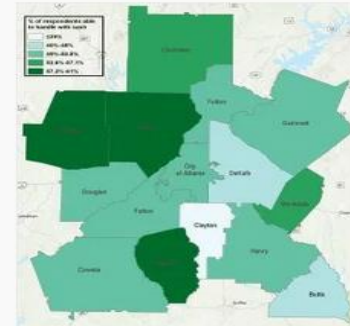
A series of interactive maps  
explores where metro  
Atlantans age 65 and older  
live, where they are more  
likely to be living in poverty



### Friday Factday: Getting to Know our Renters

By Layla Bellows | June 28th,  
2019 | Categories: Equity,  
Friday Factday, Housing, Metro  
Atlanta Speaks | Tags:  
affordability, housing, racial  
disparities

Rental affordability and the  
challenges of being a renter  
are gaining ground among  
advocates, researchers and  
politicians. This Friday  
Factday takes an in-depth  
look at who is most likely to  
be renting in the metro and



### Monday Mapday: Handling Emergency Expenses in the Metro

By Layla Bellows | June 3rd,  
2019 | Categories: Economy,  
Metro Atlanta Speaks, Monday  
Mapday, Uncategorized

Search 33°n

Search  **Q**

#### Most Popular Posts

Regional Snapshot: Population  
Forecasts and Future Race and  
Age Trends  
339 views

Friday Factday: Promising  
Careers in Georgia  
224 views

Regional Snapshot: 2019  
Population Estimates—Holding  
the Line on Growth  
173 views

Monday Mapday: Interactive  
Map of Atlanta Homicide Data  
152 views

Monday Mapday: A Tract-Level  
View of County Migration  
107 views

#### Categories

Public Health (55)

Other Demographics (51)

# **2020: APPLYING WHAT WE LEARNED IN THE YEAR AHEAD**

**Alex Camardelle, Senior Policy  
Analyst Georgia Budget & Policy  
Institute**

**Lesley Grady, Principal  
Chrysalis Lab**

**Kyle Waide, President and CEO  
Atlanta Community Food Bank**

# Q & A DISCUSSION

Submit your questions in the chat!

Robyn Bussey, ARCHI

# INSIGHT DATA TOOL: SHARE YOUR IDEAS

Neighborhood Nexus

# www.neighborhood nexus.org/insights

 @NHNexus

 /company/neighborhoodnexus

**Tommy Pearce**

Executive Director, Neighborhood Nexus

[tpearce@atlantaregional.org](mailto:tpearce@atlantaregional.org)



Maps & DataCustom InsightsAboutDonate

### Real-Time Insights

The only way to understand and plan for our most critical and emerging issues is to keep each other informed. Send insights to [tpearce@atlantaregional.org](mailto:tpearce@atlantaregional.org).

Home / Real-Time Insights

30  
Nov, 2020

Operations, Workforce

“

Before the pandemic, Georgia commuters worked an average of 0.8 days per week from home. By April, that number reached 4.6 days, and remained at 4.4 through October. The latest survey results from Georgia Commute Options show a desired future of 3.2 remote days per week, with most executives anticipating changes in this direction. [\[webinars\]](#) (Georgia Commute Options)

### Interest in Future Remote Work Has Increased



Category	Before	Desired Future (April 2020)	Desired Future (August 2020)	Desired Future (October 2020)
5+ days a week	3%	13%	29%	33%
3-4 days a week	4%	25%	31%	28%
1-2 days a week	24%	10%	3%	9%
A few times a month	14%	-7%	-11%	-11%
Once a month	11%	-41%	-42%	-42%
Never	44%	-1%	-10%	-9%

AVERAGE WORK FROM HOME DAYS: 0.8 (Before) → 2.5 (April) → 3.2 (August) → 3.3 (October)

313% Increase

61% of employees now want to work 3+ days per week in the future (up from 38% in the April survey)

[Read More >](#)

18  
Nov, 2020

Basic Needs, Housing, Refugee

“

Under the new presidency, refugee resettlement is expected to surge. Resettlement agencies in Atlanta are collaborating to best serve their clients while understanding and meeting demand for employment, housing, health, and other services. [\[link\]](#) (WABE)

28  
Oct, 2020

Health, Policy

“

### Hospitalizations & Mask Requirements

The chart below shows the growth in hospitalizations by hospital type, based on the percentage of patients they treat from counties with mask requirements. Data is through Oct. 20, 2020.

# ANNOUNCEMENTS

## Dec 15<sup>th</sup>: The COVID-19 Vaccine: The Facts and The Way Forward

- In partnership with Morehouse and the GA CEAL Network
- Registration available at <http://archicollaborative.org/> and [HERE](#)

Upcoming ARCHI Partner Events also available on our website  
[www.archicollaborative.org](http://www.archicollaborative.org)

