



The Quantitative Data Story

Presented to: The Atlanta Regional Collaborative for Health Improvement



The Davidson Framework: A Way to Think about Improving the Safety Net

- Individual Factors
- Community Factors
- Access and Outcomes

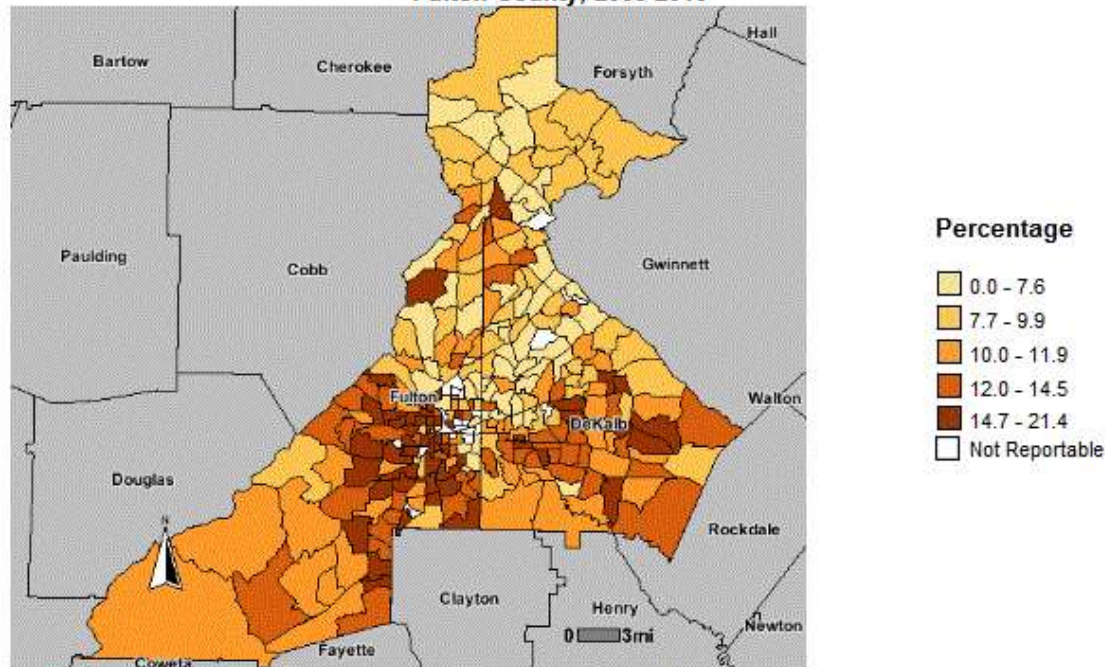
Davidson, P. et al, "A Framework for Evaluating Safety Net and Other Community-Level Factors on Access for Low-Income Populations," *Inquiry*. 41 21-38, Spring 2004.

Individual Factors

- Measures like:
 - Age
 - Race
 - Federal Poverty Level (FPL)
 - Uninsured
 - Foreign born
 - Income
 - Graduation rates

Percent Low Birth Weight 2008-2010

Percent of Births, Low Birthweight (less than 2,500 grams) by Census Tract, DeKalb County, Fulton County, 2008-2010



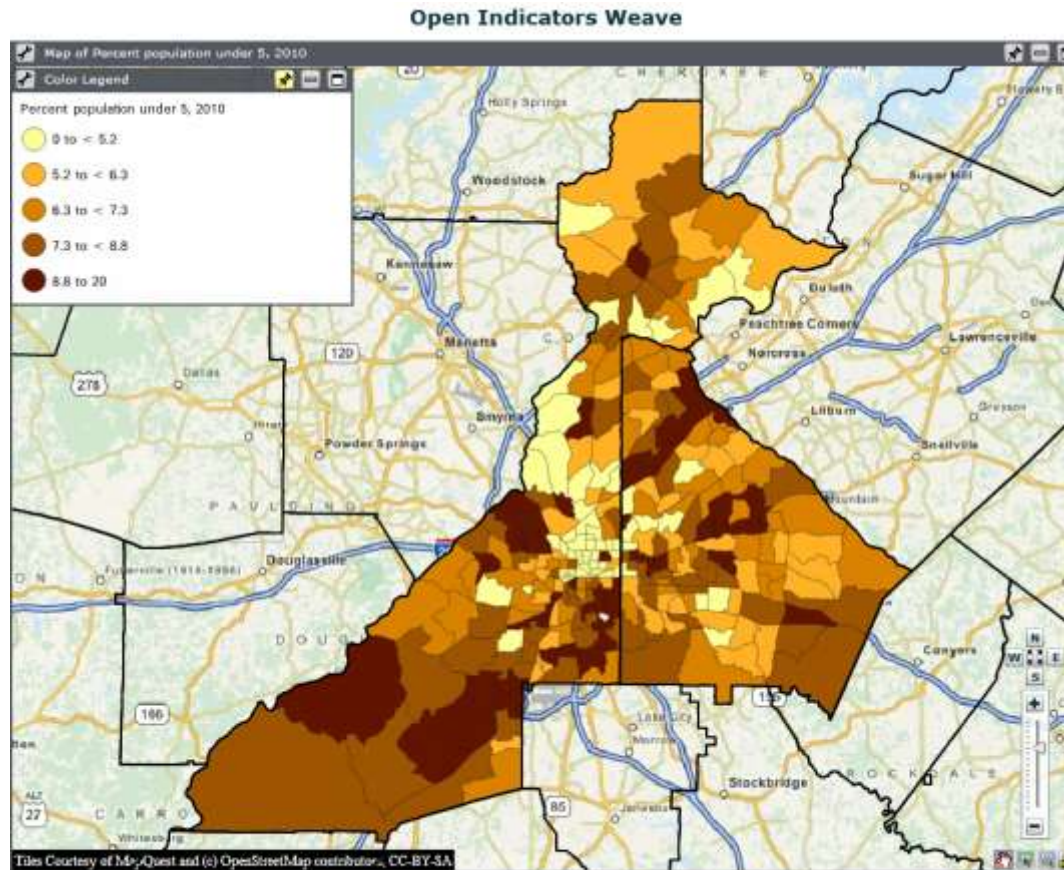
Georgia Department of Public Health
OASIS Mapping Tool <http://oasis.state.ga.us>
Office of Health Indicators for Planning (OHIP)

Map Created: Aug 28, 2012

Note: This is a color map.

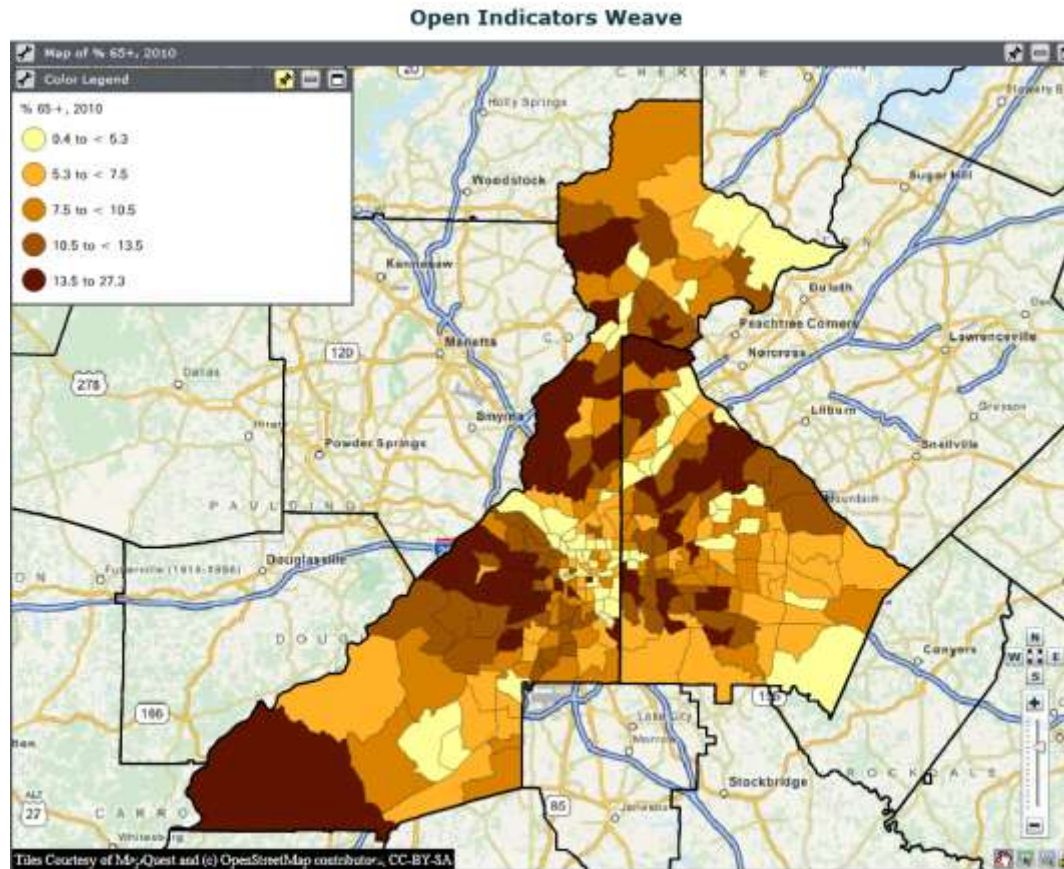
Data Classification Method: Quantiles.

Percent of Population Age <5, 2010



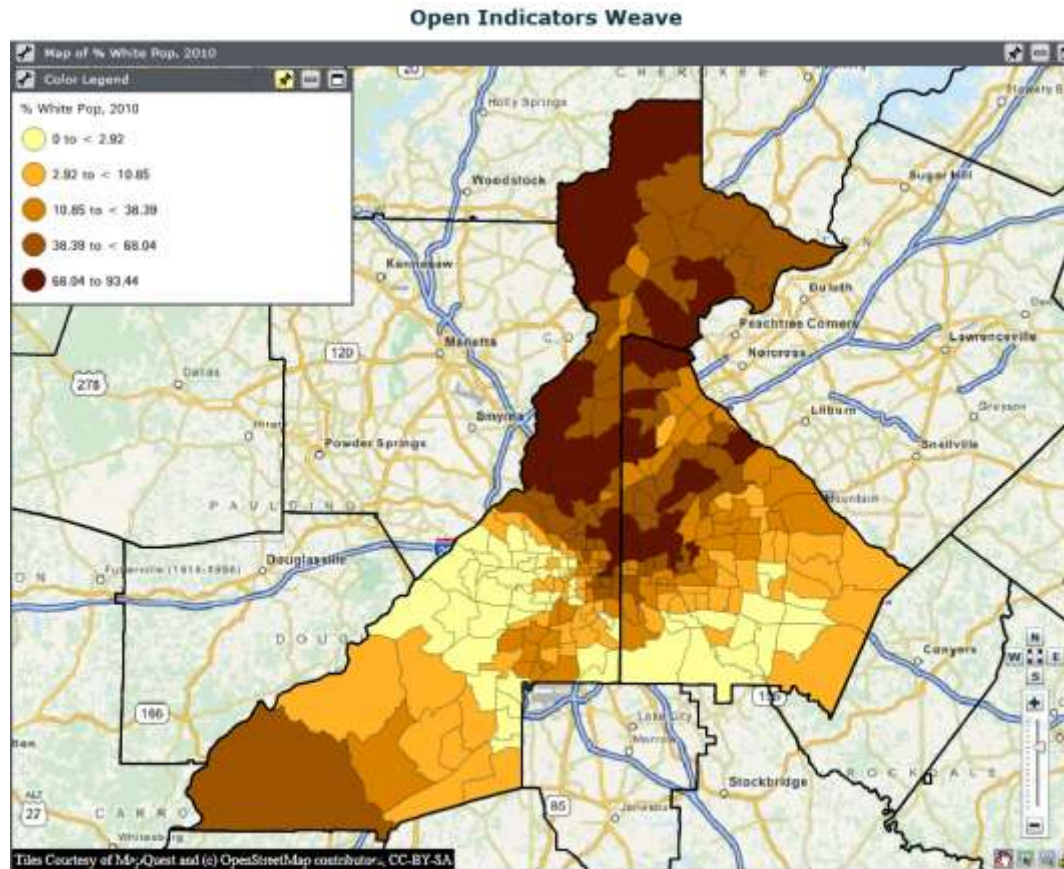
(C) 2012 Open Indicators Consortium Weave

Percent of Population Age 65+, 2010



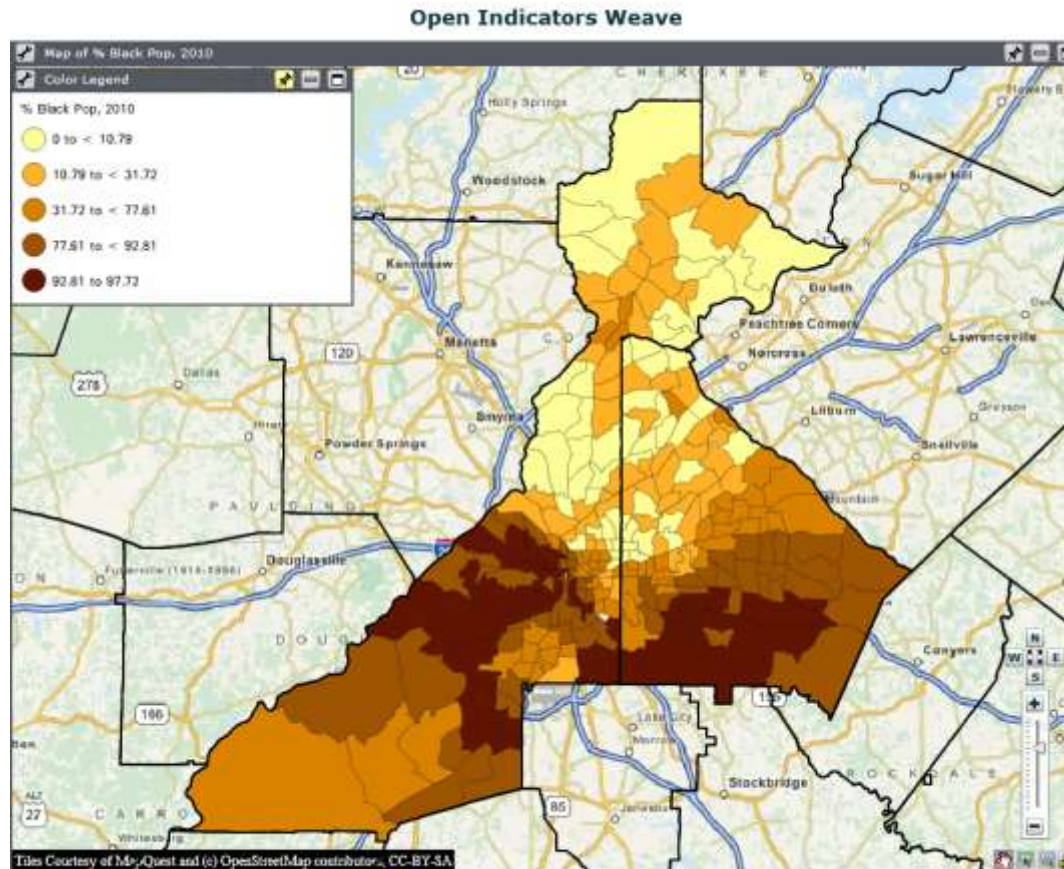
(C) 2012 Open Indicators Consortium Weave

Percent of Population White, 2010



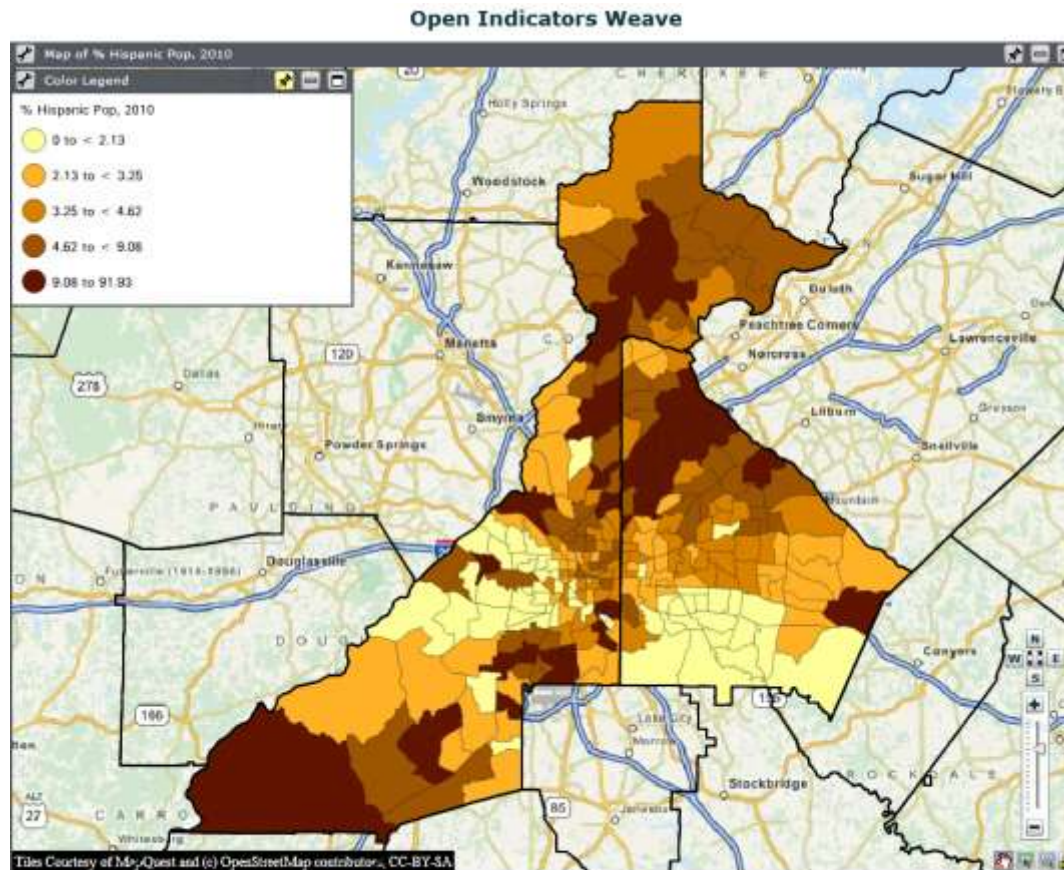
(C) 2012 Open Indicators Consortium Weave

Percent of Population Black, 2010



(C) 2012 Open Indicators Consortium Weave

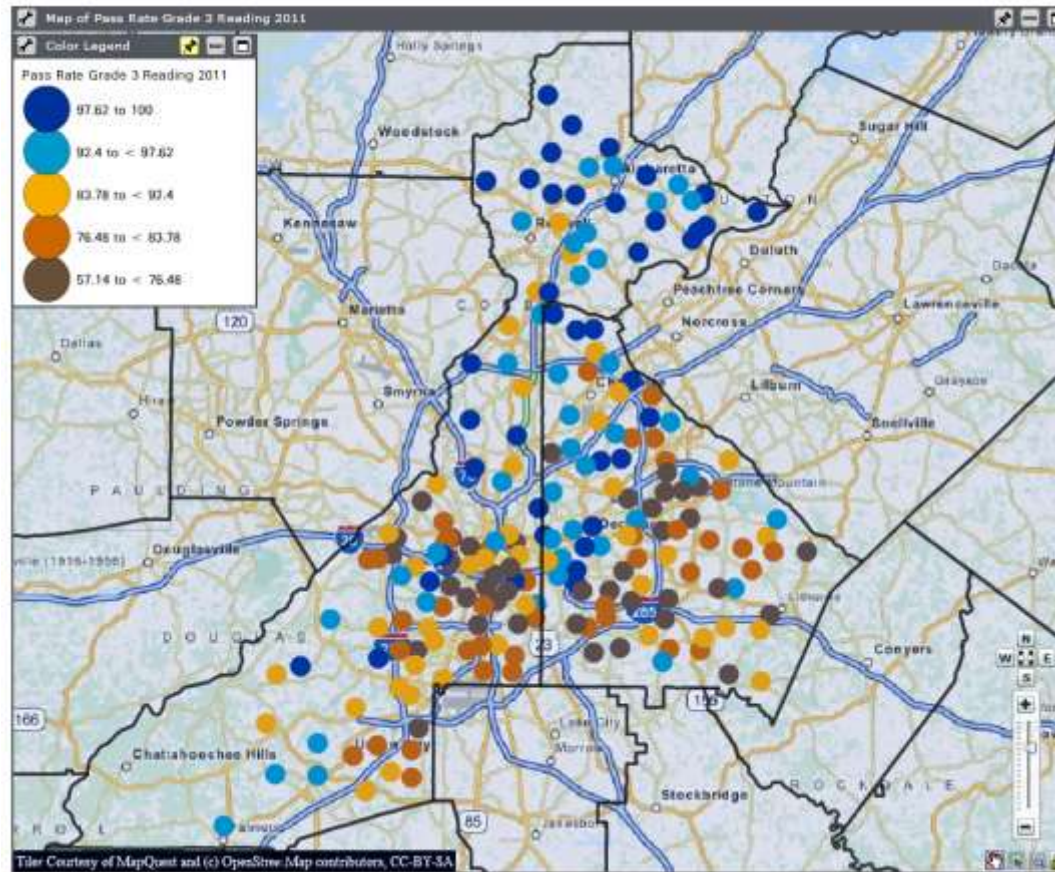
Percent of Population Hispanic, 2010



(C) 2012 Open Indicators Consortium Weave

Rate of Students Passing 3rd Grade Reading CRCT - 2011

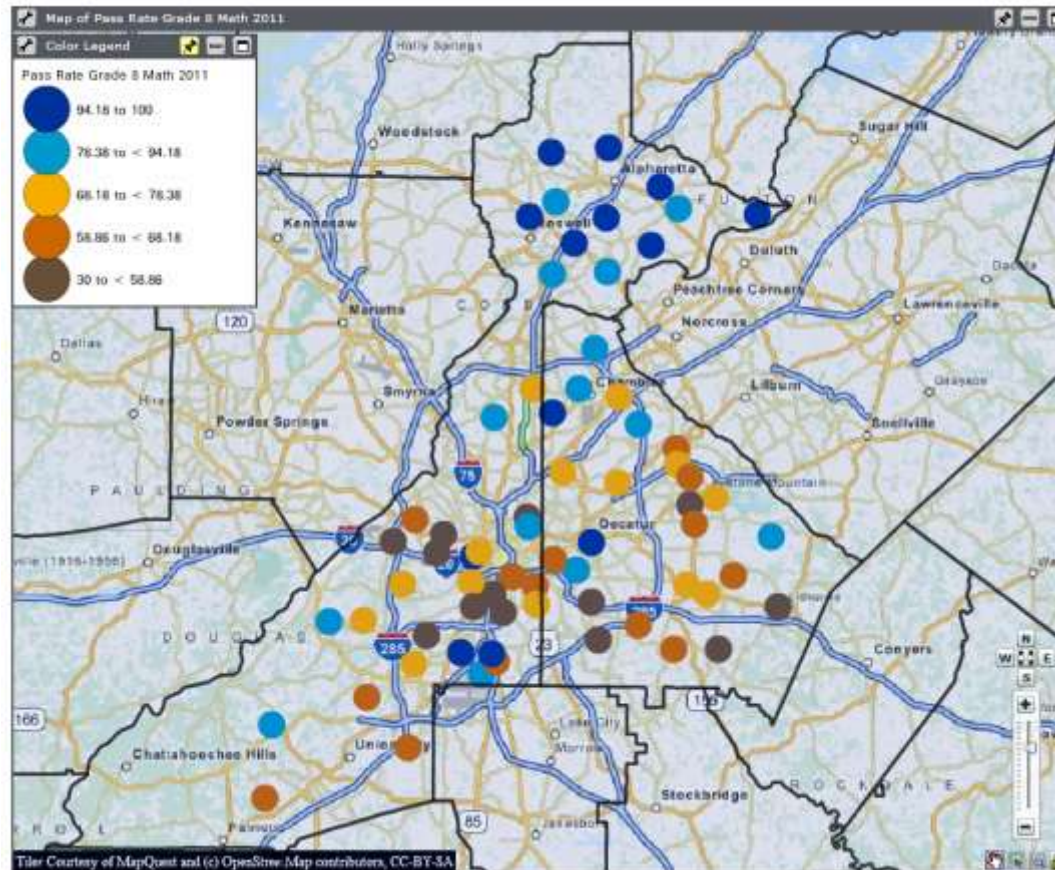
Open Indicators Weave



(C) 2012 Open Indicators Consortium Members

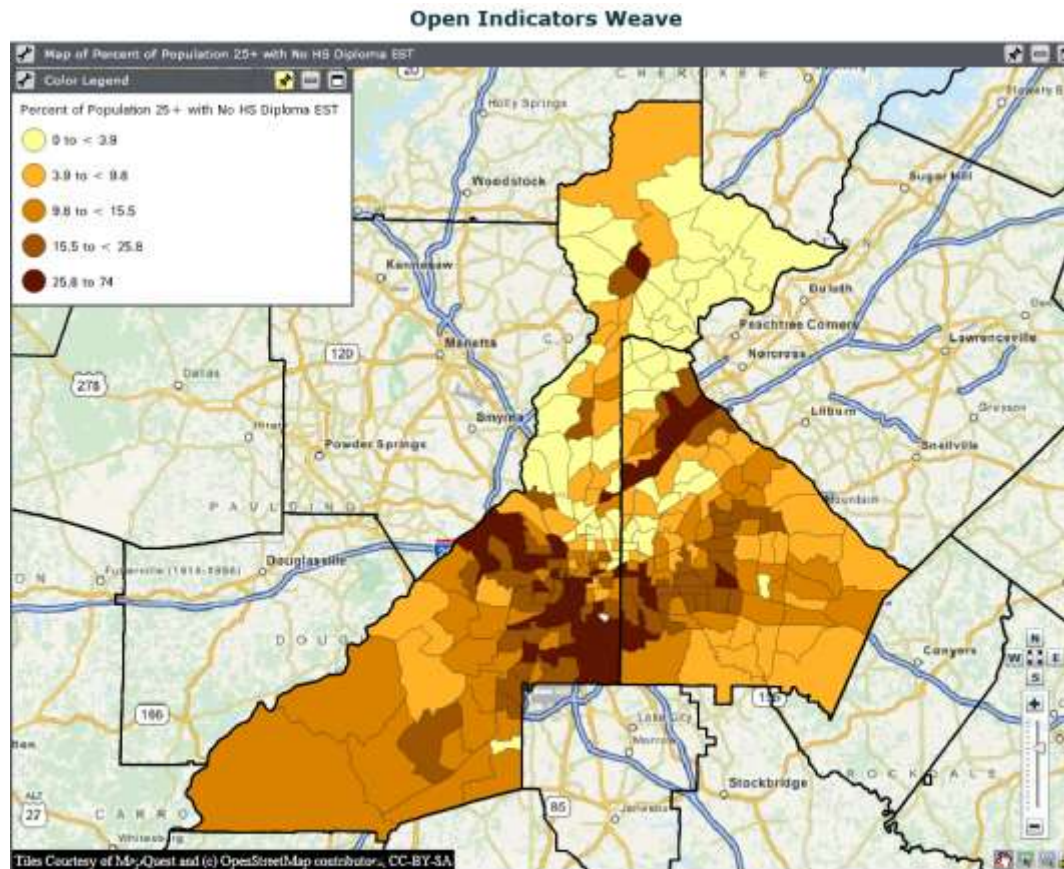
Rate of Students Passing 8th Grade Math CRCT - 2011

Open Indicators Weave



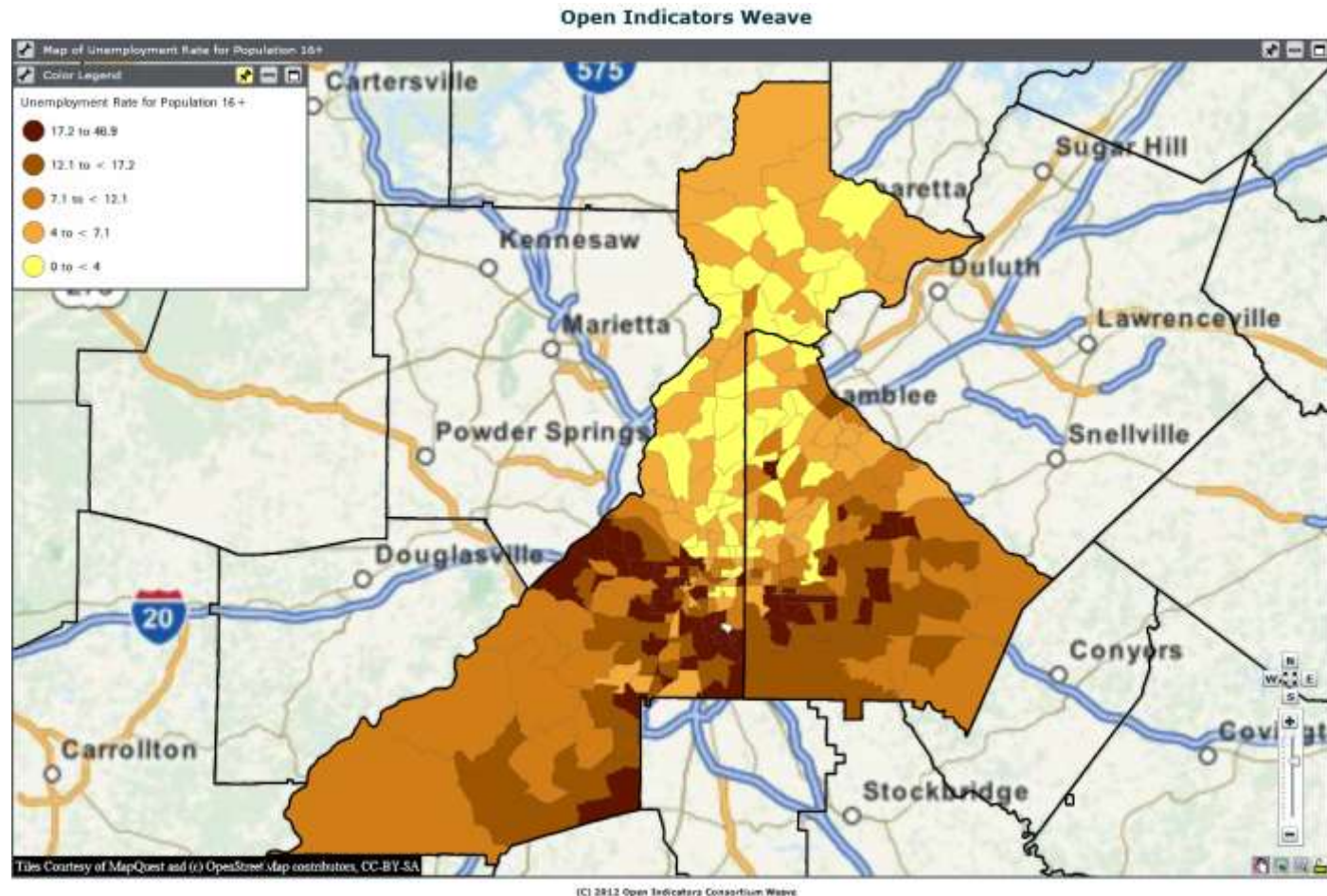
(C) 2012 Open Indicators Consortium Weave

Percent of Population without a High School Diploma, 2010



(C) 2012 Open Indicators Consortium Members

Percent of Population Unemployed, 2012

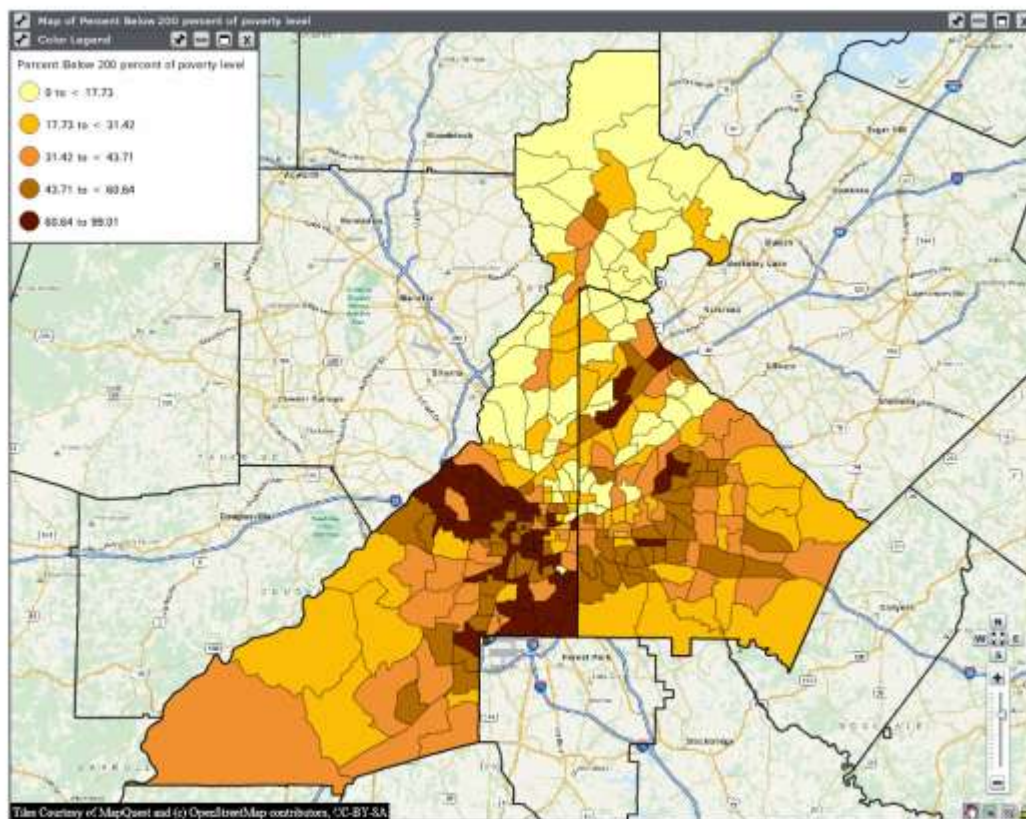


Open Indicators Weave



Percent of Population Below 200% Federal Poverty Level, 2010

Open Indicators Weave



(C) 2012 Open Indicators Consortium Weave

Individual Factors

	DeKalb	Fulton	Georgia
% Uninsured (nonelderly)	23%	23%	21%
% <250% FPL, non-elderly, uninsured	37%	39%	33%
% foreign born	16%	13%	10%
Per capita income	\$28,412	\$ 37,211	\$28,134
Household income	\$51,349	\$ 56,709	\$49,347
% population with bachelor's degree	39%	48%	27%

Community-level Factors

- Measures like:
 - AIDS Incidence
 - Medicaid payments
 - Federally Qualified Health Center (FQHC) expenditures
 - Disproportionate Share Hospital (DSH) payments
 - Physicians per population
 - Hospital beds
 - Outpatient visits

Community-level Factors

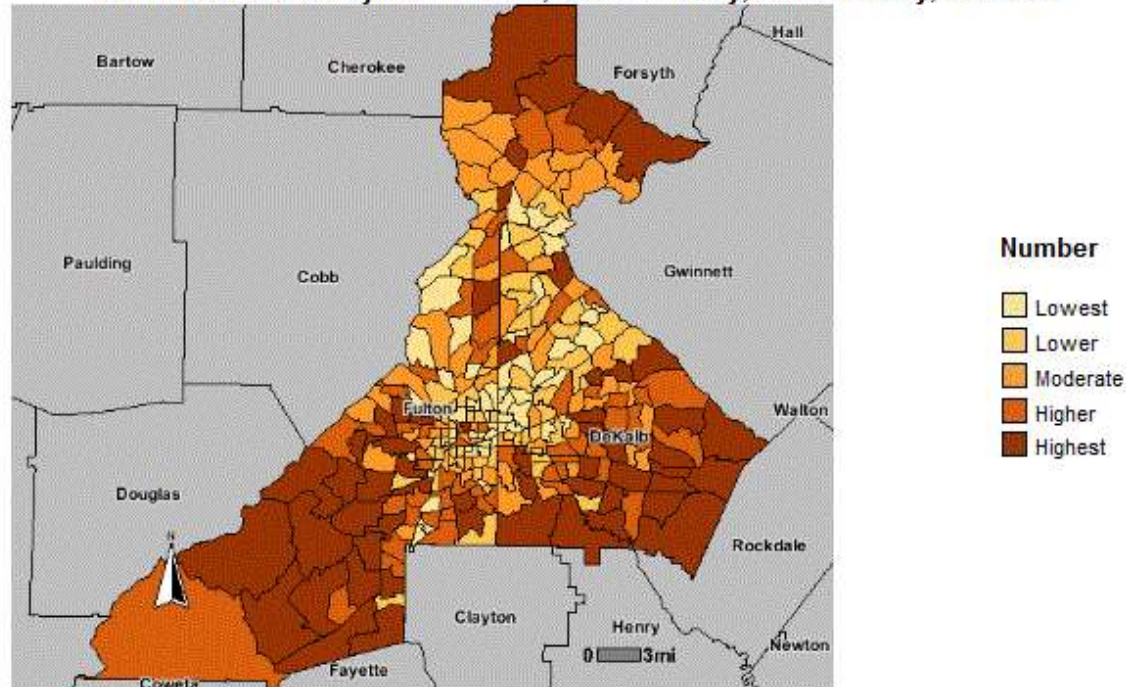
	DeKalb	Fulton	Georgia
AIDS incidence per 100,000	598.2	798.7	242.1
Medicaid payments per enrollee	\$5,136	\$5,136	\$4,986
FQHC expenditures per 1,000 < 125% FPL	\$15,419	\$89,329	\$19,681
FQHCs per 1,000(<200% FPL)	0.013	0.012	0.006
DSH payments	\$15,088,700	\$159,502,298	\$269,036,230
Physicians per 1,000 population	3.18	3.88	1.81
Hospital beds per 1,000	2.4	4.7	2.6
% outpatient Grady visits	35%	54%	
% outpatient teaching hospital visits	27%	35%	

Access and Outcomes

- Measures like:
 - Uninsured discharges
 - Medicaid discharges
 - Ambulatory Care Sensitive Conditions (ACSC) discharges
 - Mortality
 - Premature death

ER Visits, 2008-2010

Number of ER Visits by Census Tract, DeKalb County, Fulton County, 2008-2010



Georgia Department of Public Health
OASIS Mapping Tool <http://oasis.state.ga.us>
Office of Health Indicators for Planning (OHIP)

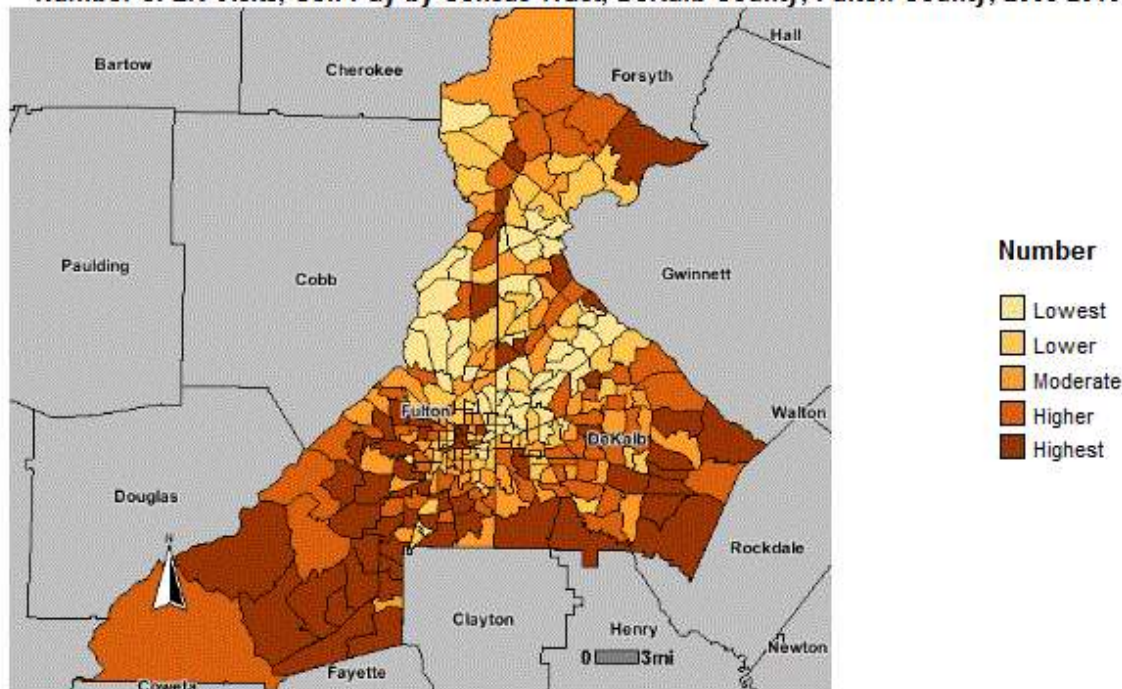
Map Created: Aug 21, 2012

Note: This is a color map.

Data Classification Method: Quantiles.

Uninsured ER Visits, 2008-2010

Number of ER Visits, Self-Pay by Census Tract, DeKalb County, Fulton County, 2008-2010



Georgia Department of Public Health
OASIS Mapping Tool <http://oasis.state.ga.us>
Office of Health Indicators for Planning (OHIP)

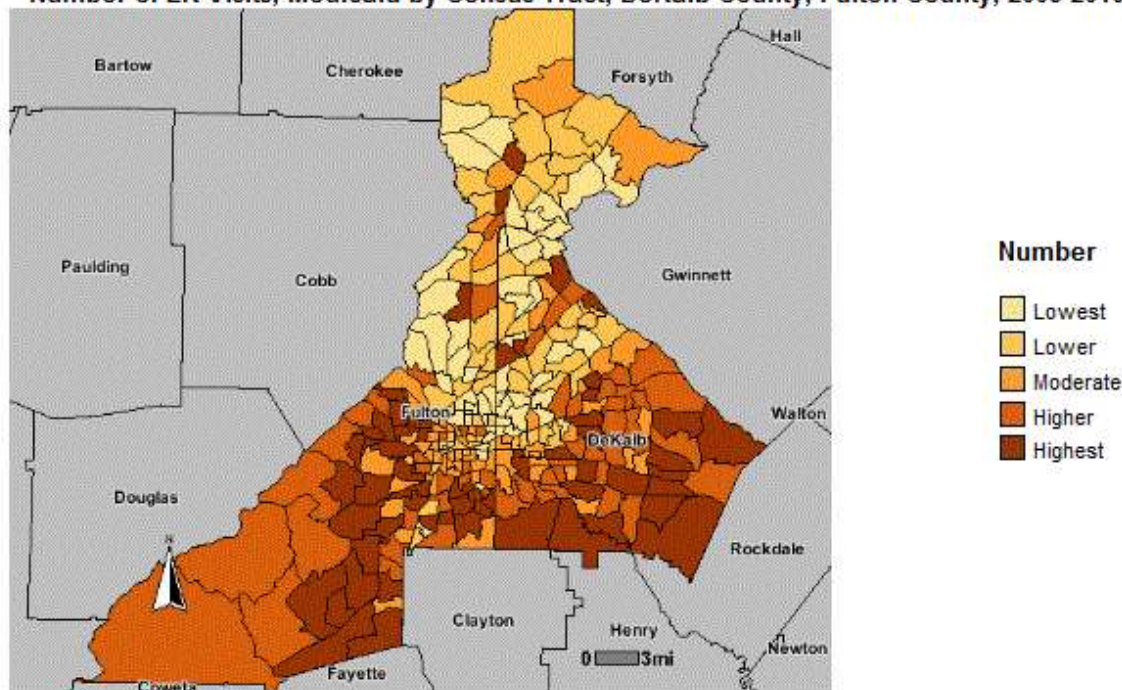
Map Created: Aug 21, 2012

Note: This is a color map.

Data Classification Method: Quantiles.

Medicaid ER Visits, 2008-2010

Number of ER Visits, Medicaid by Census Tract, DeKalb County, Fulton County, 2008-2010



Georgia Department of Public Health
OASIS Mapping Tool <http://oasis.state.ga.us>
Office of Health Indicators for Planning (OHIP)

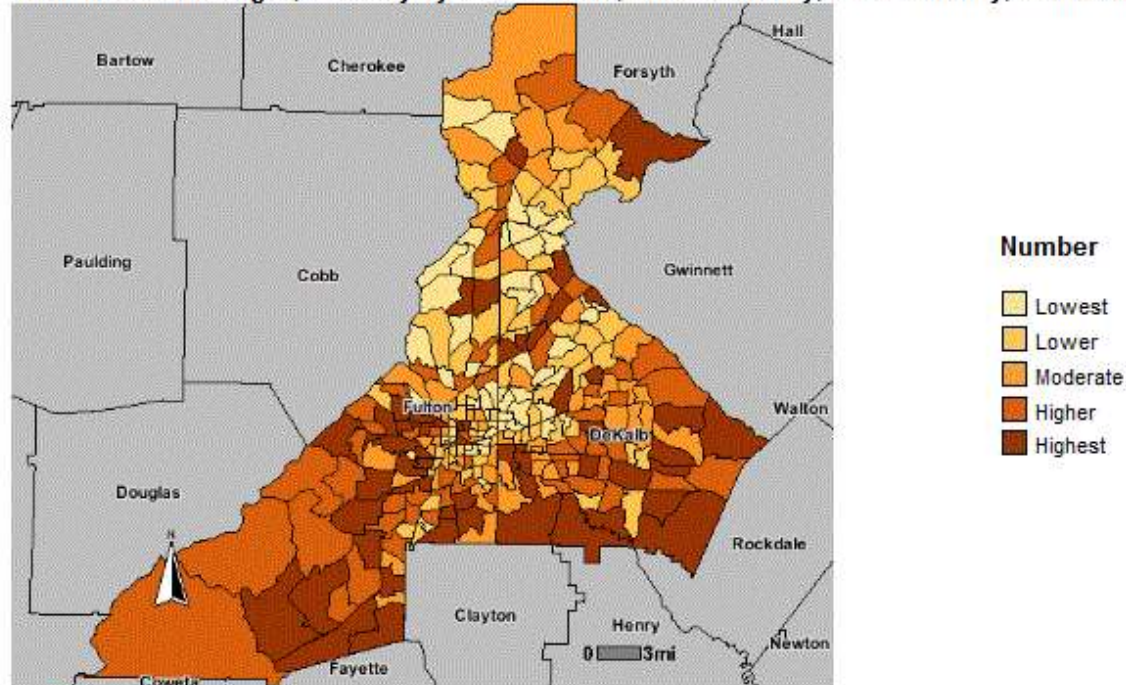
Map Created: Aug 21, 2012

Note: This is a color map.

Data Classification Method: Quantiles.

Uninsured Discharges, 2008-2010

Number of Discharges, Self-Pay by Census Tract, DeKalb County, Fulton County, 2008-2010



Georgia Department of Public Health
OASIS Mapping Tool <http://oasis.state.ga.us>
Office of Health Indicators for Planning (OHIP)

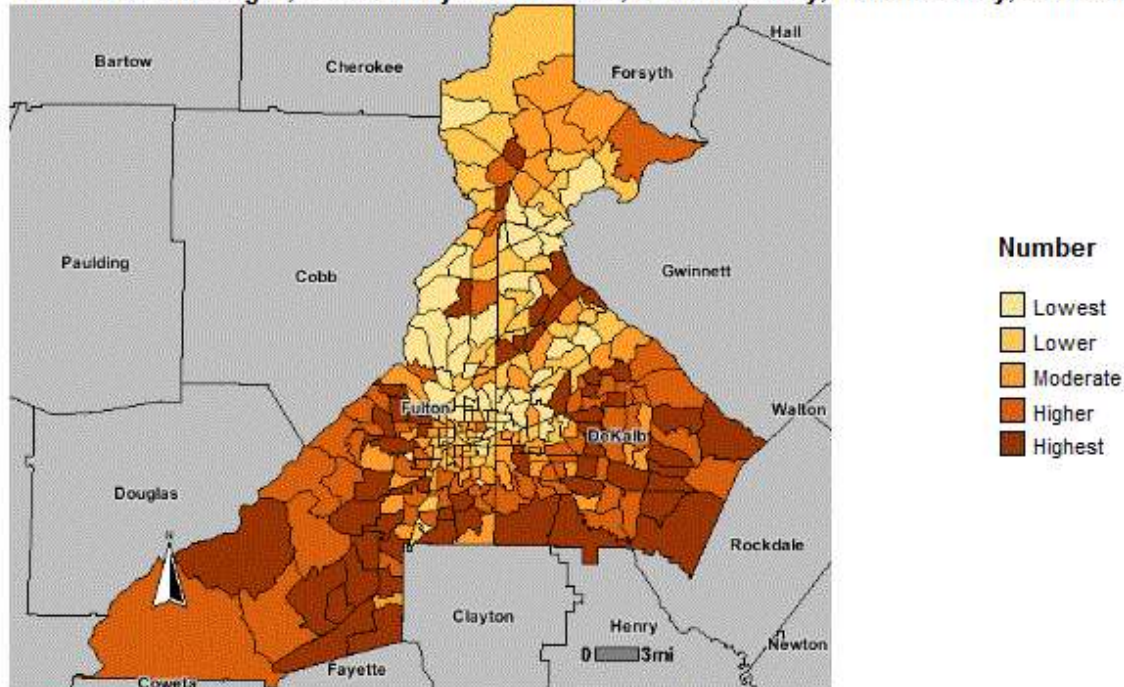
Map Created: Aug 21, 2012

Note: This is a color map.

Data Classification Method: Quantiles.

Medicaid Discharges, 2008-2010

Number of Discharges, Medicaid by Census Tract, DeKalb County, Fulton County, 2008-2010



Georgia Department of Public Health
OASIS Mapping Tool <http://oasis.state.ga.us>
Office of Health Indicators for Planning (OHIP)

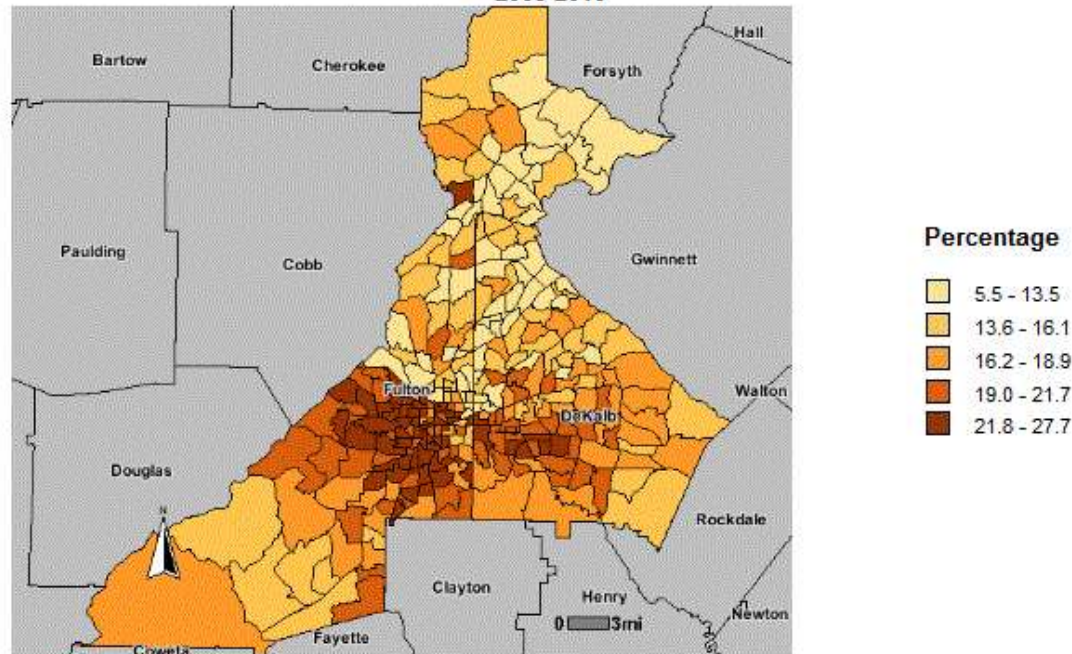
Map Created: Aug 21, 2012

Note: This is a color map.

Data Classification Method: Quantiles.

Percent of ACSC Discharges, 2008-2010

Percent of Discharges by ACS Condition by Census Tract, DeKalb County, Fulton County, 2008-2010



Georgia Department of Public Health
OASIS Mapping Tool <http://oasis.state.ga.us>
Office of Health Indicators for Planning (OHIP)

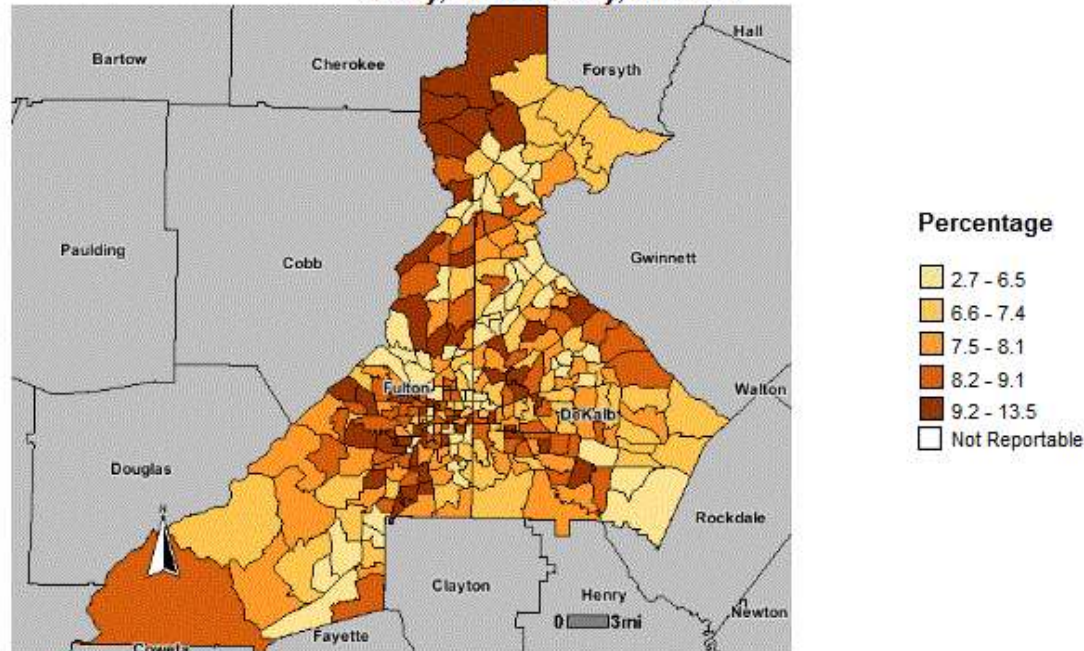
Map Created: Aug 9, 2012

Note: This is a color map.

Data Classification Method: Quantiles.

Percent of ACSC Discharges – Acute, 2008-2010

Percent of Discharges by ACS Condition, Any Acute Condition by Census Tract, DeKalb County, Fulton County, 2008-2010



Georgia Department of Public Health
OASIS Mapping Tool <http://oasis.state.ga.us>
Office of Health Indicators for Planning (OHIP)

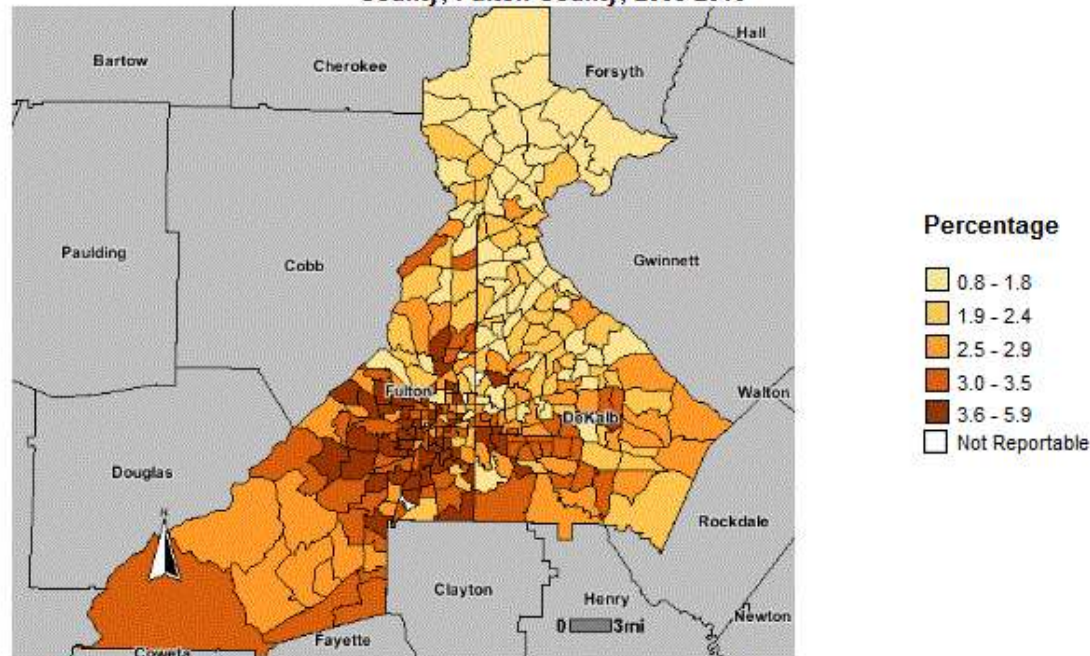
Map Created: Aug 9, 2012

Note: This is a color map.

Data Classification Method: Quantiles.

Percent of ACSC Discharges – Avoidable, 2008-2010

Percent of Discharges by ACS Condition, Any Avoidable Illness by Census Tract, DeKalb County, Fulton County, 2008-2010



Georgia Department of Public Health
OASIS Mapping Tool <http://oasis.state.ga.us>
Office of Health Indicators for Planning (OHIP)

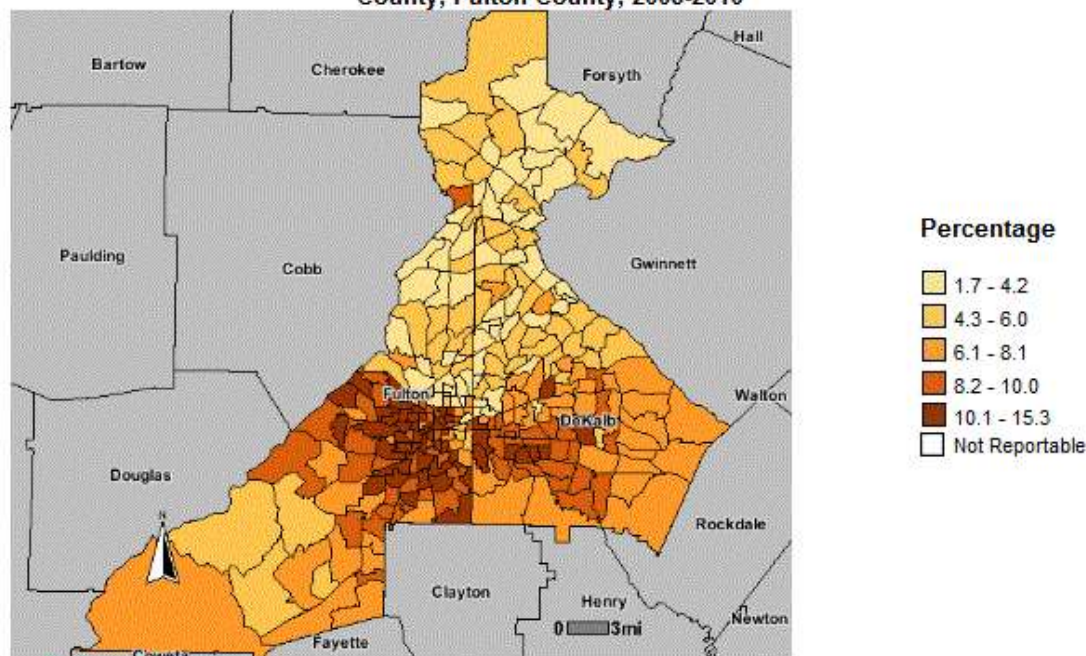
Map Created: Aug 9, 2012

Note: This is a color map.

Data Classification Method: Quantiles.

Percent of ACSC Discharges – Chronic, 2008-2010

Percent of Discharges by ACS Condition, Any Chronic Condition by Census Tract, DeKalb County, Fulton County, 2008-2010



Georgia Department of Public Health
OASIS Mapping Tool <http://oasis.state.ga.us>
Office of Health Indicators for Planning (OHIP)

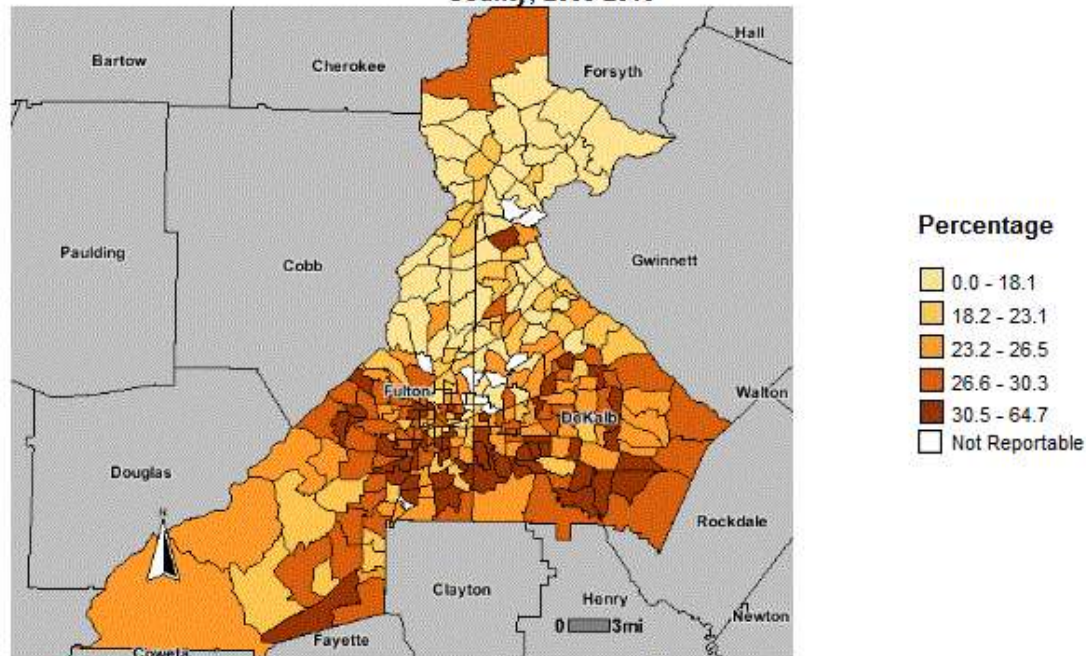
Map Created: Aug 9, 2012

Note: This is a color map.

Data Classification Method: Quantiles

Percent ACSC Uninsured Discharges, 2009-2010

Percent of Discharges by ACS Condition, Self-Pay by Census Tract, DeKalb County, Fulton County, 2008-2010



Georgia Department of Public Health
OASIS Mapping Tool <http://oasis.state.ga.us>
Office of Health Indicators for Planning (OHIP)

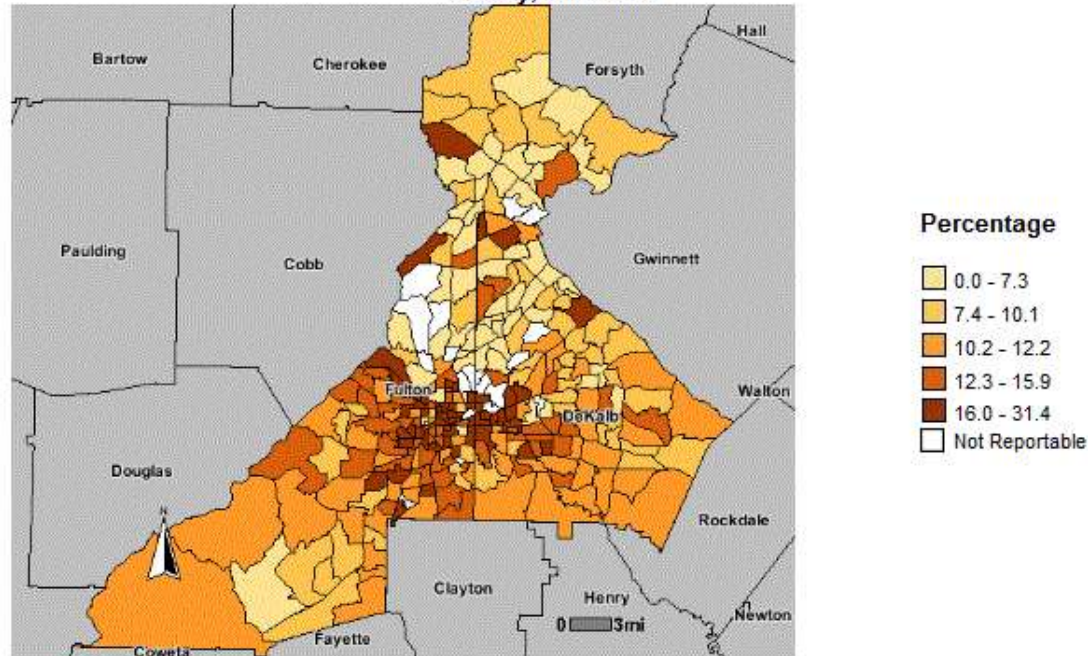
Map Created: Aug 21, 2012

Note: This is a color map.

Data Classification Method: Quantiles.

Percent ACSC Medicaid Discharges, 2008-2010

Percent of Discharges by ACS Condition, Medicaid by Census Tract, DeKalb County, Fulton County, 2008-2010



Georgia Department of Public Health
OASIS Mapping Tool <http://oasis.state.ga.us>
Office of Health Indicators for Planning (OHIP)

Map Created: Aug 21, 2012

Note: This is a color map.

Data Classification Method: Quantiles.

Age Adjusted Mortality Rank

- DeKalb

- Malignant neoplasms
- Diseases of heart
- Cerebrovascular disease
- Unintentional injuries
- Chronic lower respiratory disease
- Nephritis
- Alzheimer's disease
- Septicemia
- Diabetes
- Influenza

- Fulton

- Diseases of heart
- Malignant neoplasms
- Cerebrovascular disease
- Unintentional injuries
- Chronic lower respiratory disease
- Nephritis
- Alzheimer's disease
- Septicemia
- Influenza
- Diabetes

Source: <http://oasis.state.ga.us>

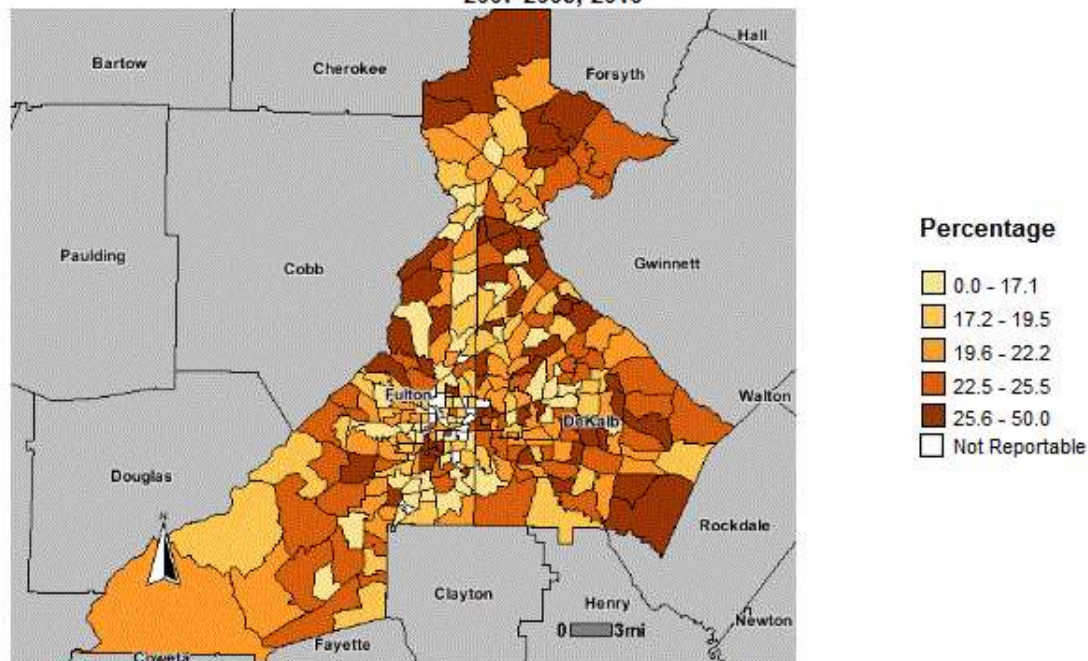
Leading Causes of Premature Death

- DeKalb
 - Malignant neoplasms
 - Diseases of heart
 - Unintentional injuries
 - Assault
 - Conditions in the perinatal period
 - HIV
 - Suicide
 - Cerebrovascular disease
 - Congenital malformations
 - Diabetes
- Fulton
 - Malignant neoplasms
 - Diseases of heart
 - Unintentional injuries
 - HIV
 - Assault
 - Conditions in the perinatal period
 - Suicide
 - Cerebrovascular disease
 - Nephritis
 - Septicemia

Source: <http://oasis.state.ga.us>

Percent of Deaths Caused by Cancer, 2007-2008, 2010

Percent of Deaths by Cause, All Cancers by Census Tract, DeKalb County, Fulton County, 2007-2008, 2010



Georgia Department of Public Health
OASIS Mapping Tool <http://oasis.state.ga.us>
Office of Health Indicators for Planning (OHIP)

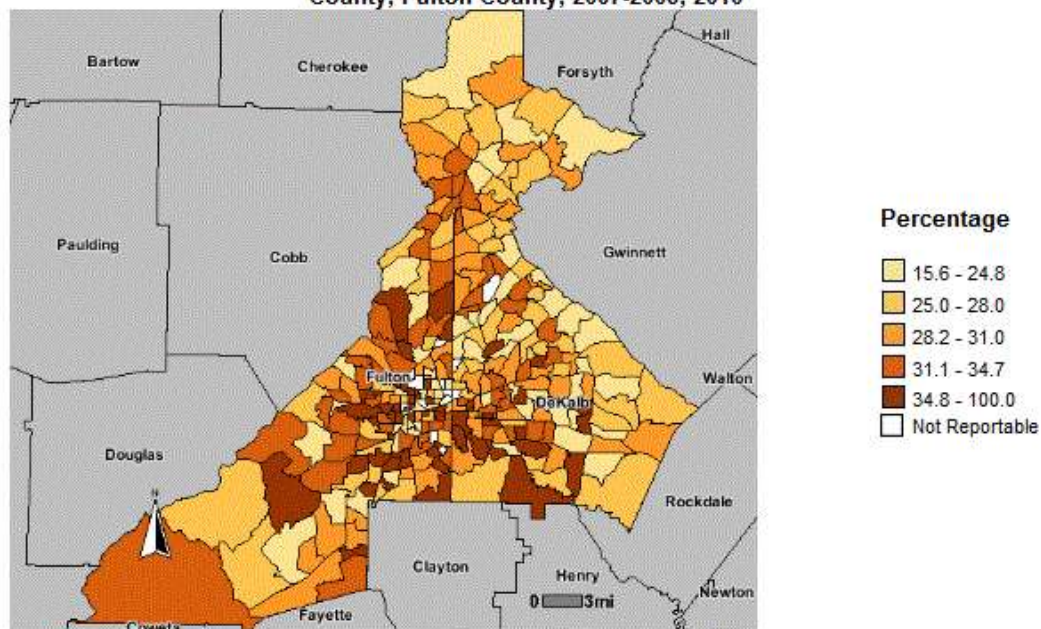
Map Created: Aug 9, 2012

Note: This is a color map.

Data Classification Method: Quantiles.

Percent of Deaths Caused by Cardiovascular Disease, 2007-2008, 2010

Percent of Deaths by Cause, All Major Cardiovascular Diseases by Census Tract, DeKalb County, Fulton County, 2007-2008, 2010



Georgia Department of Public Health
OASIS Mapping Tool <http://oasis.state.ga.us>
Office of Health Indicators for Planning (OHIP)

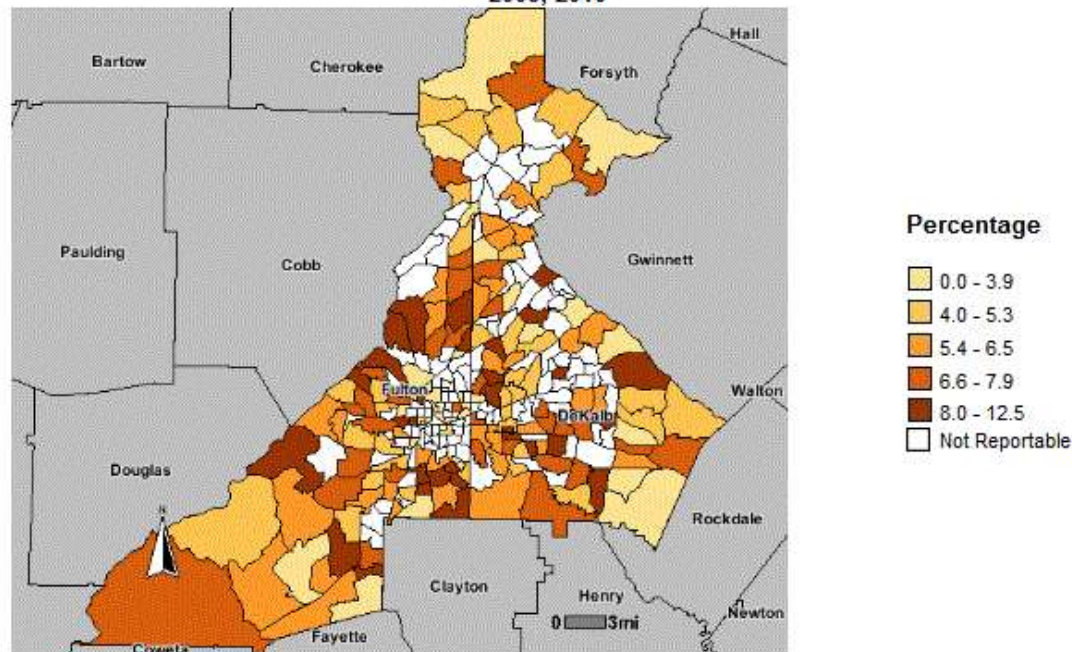
Map Created: Aug 9, 2012

Note: This is a color map.

Data Classification Method: Quantiles.

Percent of Deaths Caused by Stroke, 2007-2008, 2010

Percent of Deaths by Cause, Stroke by Census Tract, DeKalb County, Fulton County, 2007-2008, 2010



Georgia Department of Public Health
OASIS Mapping Tool <http://oasis.state.ga.us>
Office of Health Indicators for Planning (OHIP)

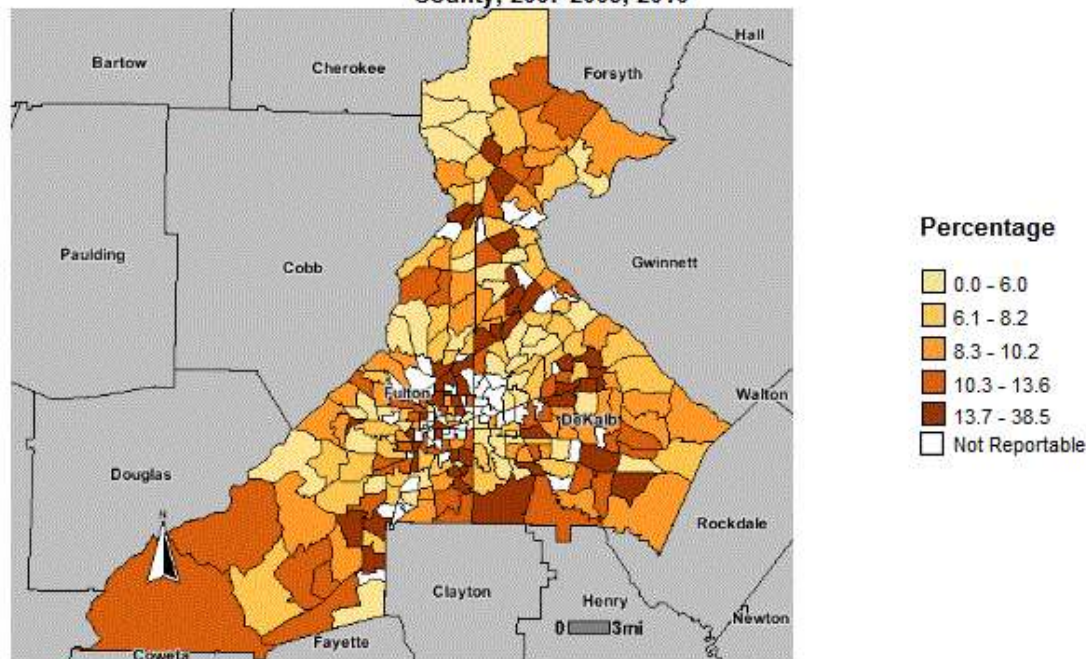
Map Created: Aug 9, 2012

Note: This is a color map.

Data Classification Method: Quantiles.

Percent of Deaths Caused by External Causes, 2007-2008, 2010

Percent of Deaths by Cause, All External Causes by Census Tract, DeKalb County, Fulton County, 2007-2008, 2010



Georgia Department of Public Health
OASIS Mapping Tool <http://oasis.state.ga.us>
Office of Health Indicators for Planning (OHIP)

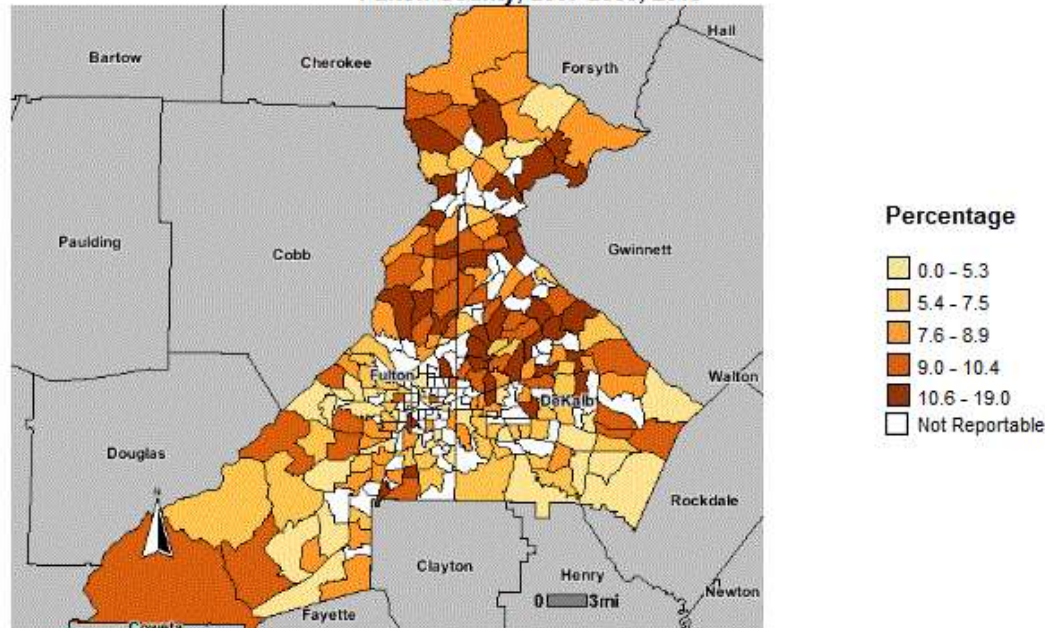
Map Created: Aug 9, 2012

Note: This is a color map.

Data Classification Method: Quantiles.

Percent of Deaths Caused by Respiratory Diseases, 2007-2008, 2010

Percent of Deaths by Cause, All Respiratory Diseases by Census Tract, DeKalb County, Fulton County, 2007-2008, 2010



Georgia Department of Public Health
OASIS Mapping Tool <http://oasis.state.ga.us>
Office of Health Indicators for Planning (OHIP)

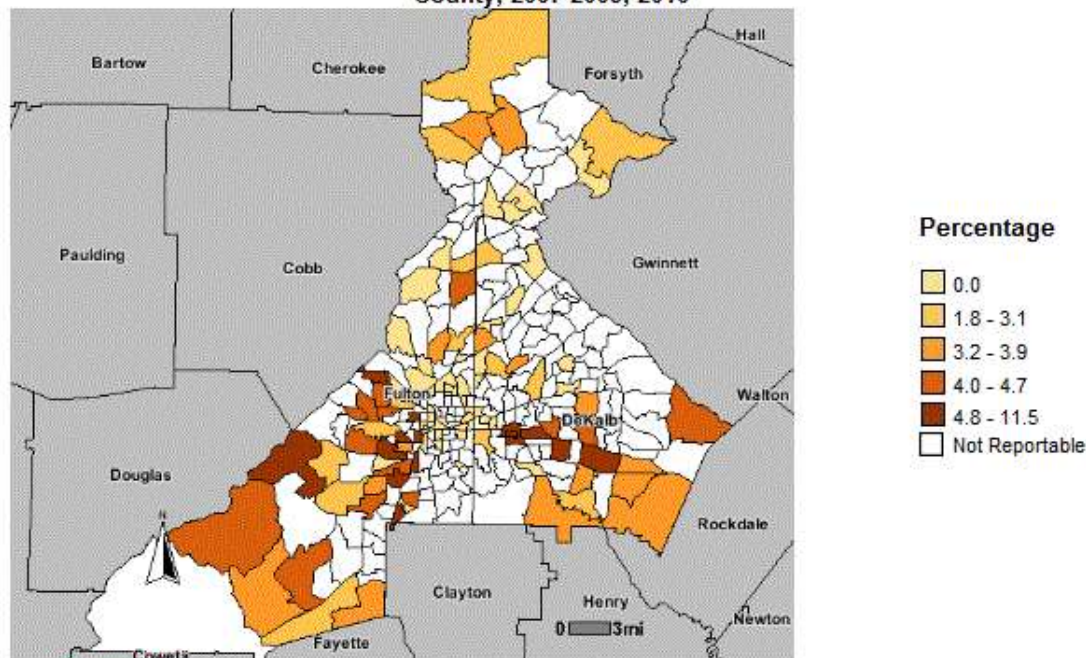
Map Created: Aug 10, 2012

Note: This is a color map.

Data Classification Method: Quantiles.

Percent of Deaths Caused by Kidney Disease, 2007-2008, 2010

Percent of Deaths by Cause, Kidney Diseases by Census Tract, DeKalb County, Fulton County, 2007-2008, 2010



Georgia Department of Public Health
OASIS Mapping Tool <http://oasis.state.ga.us>
Office of Health Indicators for Planning (OHIP)

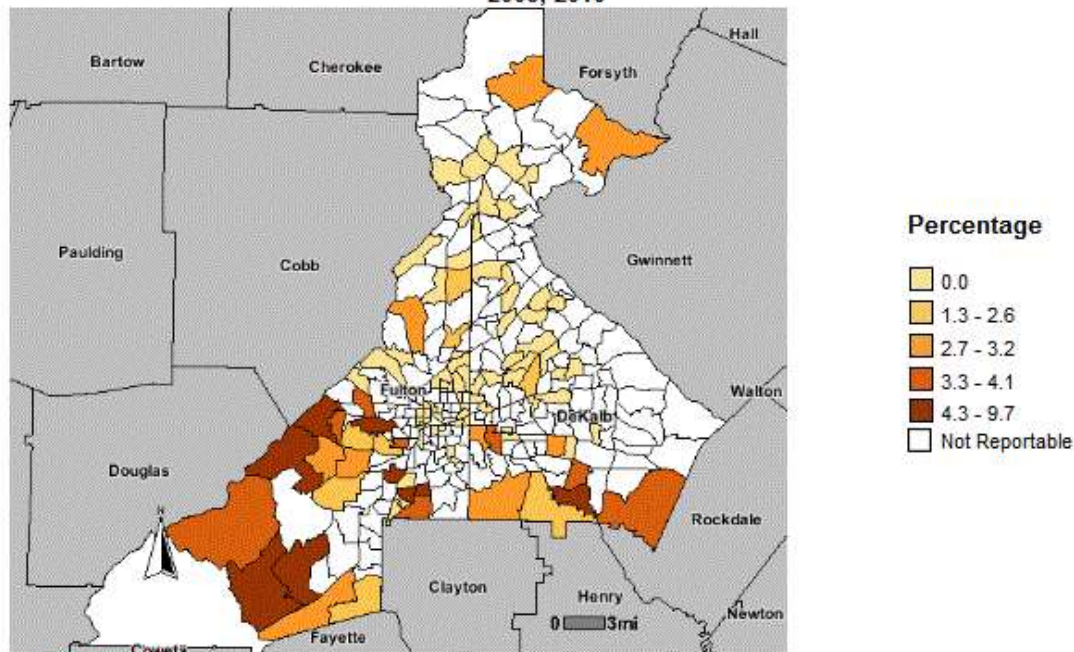
Map Created: Aug 10, 2012

Note: This is a color map.

Data Classification Method: Quantiles.

Percent of Deaths Caused by Diabetes. 2007-2008. 2010

Percent of Deaths by Cause, Diabetes by Census Tract, DeKalb County, Fulton County, 2007-2008, 2010



Georgia Department of Public Health
OASIS Mapping Tool <http://oasis.state.ga.us>
Office of Health Indicators for Planning (OHIP)

Map Created: Aug 9, 2012

Note: This is a color map.

Data Classification Method: Quantiles.

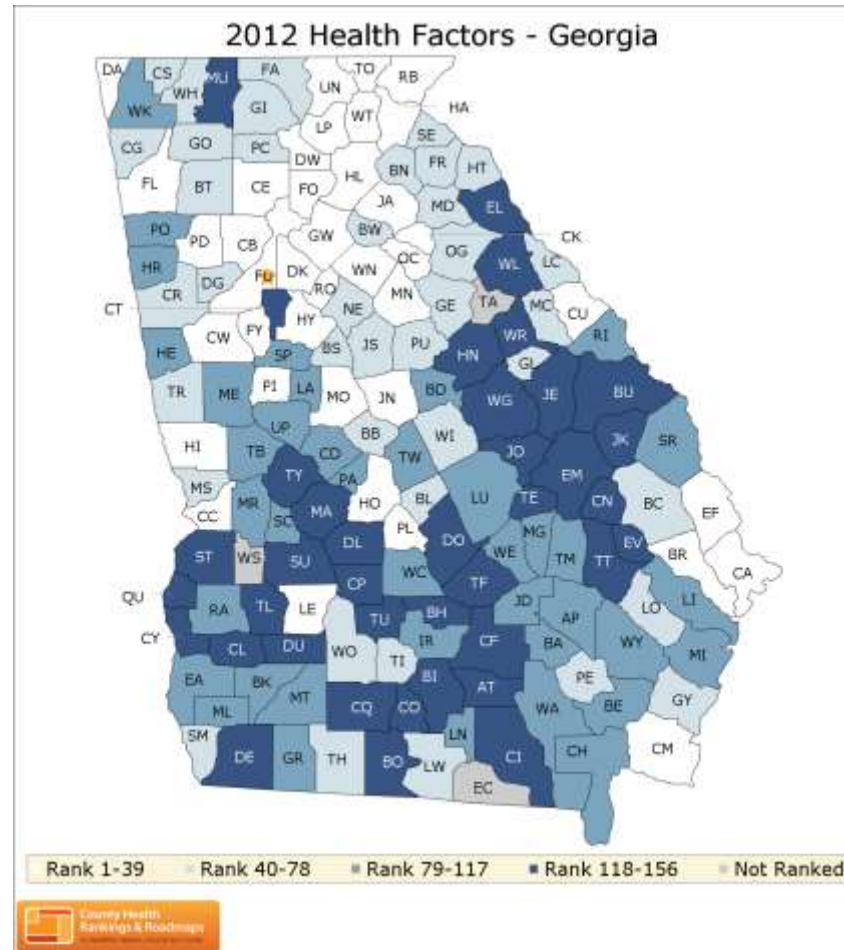
Access and Outcomes

	DeKalb	Fulton	Georgia
% uninsured	23%	23%	21%
% ACSC discharges	17.2	18.1	19.1
% ACSC 0-19	7.8	6.6	8.5
% ACSC 20-59	15.1	15.9	16.1
% ACSC 60+	27.2	28.2	28.2
Uninsured discharges per 100,000	4085.2	3755.2	3858.7
Medicaid discharges per 100,000	2815.5	2449.2	2449.6

County Health Rankings

County Health Rankings

Health Factors



County Health Rankings

Health Outcomes

