

# ARCHI



December 7, 2016

Atlanta Regional Collaborative for Health Improvement

*Joining Forces to Improve Health Outcomes in Metro Atlanta*

# Welcome, Introductions & Year End Report



*Evonne Yancey, ARCHI*

# Leadership

---

Executive Director

Collaboration Agreement



# By the Numbers

---

- ❧ \$1 million dollar, multi-year grant from Kaiser Permanente
- ❧ \$200,000 cash and in-kind contributions provided by Steering Committee members
- ❧ 70+ diverse partners have signed a membership agreement

# Branding & Communications

---

- ❧ Interviews with 20 stakeholders regarding branding
- ❧ Feedback received from the partners regarding frequency and communications desired
- ❧ Work with marketing and branding experts improved the clarity and effectiveness of the collaborative's communications



# Alignment

---

- ❧ Alignment for Health Equity and Development (AHEAD) partners support DeLowe Villiage
- ❧ Partnerships to Improve Community Health (PICH) resulted in a “Complete Streets” plan for East Point



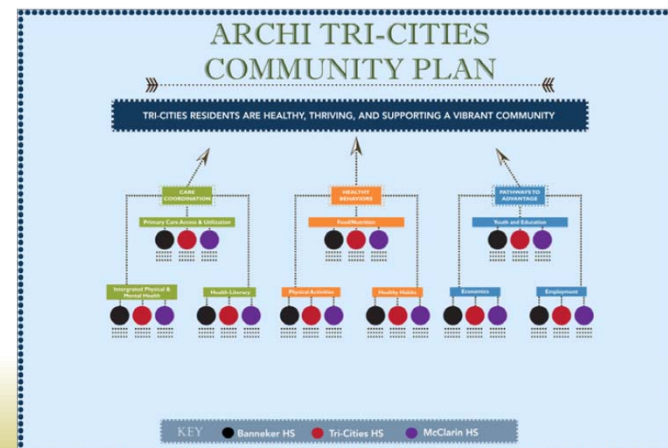
# Collaboration

---

- ❧ Shared Community Health Needs Assessment by Grady Health System, Piedmont Healthcare, Kaiser Permanente of Georgia, Saint Joseph's Health System, and WellStar Health System
- ❧ Collective Impact Initiative

# Transformational Communities

- Tri Cities celebrated a two-year anniversary
- Tri-Cities community plan
- Youth Community Health Worker training program
- Three learning sessions held in DeKalb County-Clarkston, Columbia, and Cross Keys High School cluster





# Recognition

---

- ❧ ARCHI profile published in a Grantmakers In Health supplement on innovations in health equity, published in the spring 2016 issue of the *Stanford Social Innovation Review*
- ❧ The Dekalb Board of Commissioners presented a proclamation to ARCHI
- ❧ The Best Collaboration of the Year award from Health Connect South



# Announcements



*Karen Minyard, Georgia Health Policy Center*



# ATLANTA REGIONAL COLLABORATIVE FOR HEALTH IMPROVEMENT 2017

ENGAGE BEYOND EGGS

ENGAGE WITH TRANSFORMATIONAL COMMUNITIES

COCKTAIL PARTY COMMUNICATIONS

SHARED LEADERSHIP

SHARED MEASUREMENTS





# Collective Impact Initiative Update



*John Hammond, Atlanta Regional Commission*

*Kathryn Lawler, Atlanta Regional Commission*

# Metro Atlanta Speaks Survey Panel



*Ginneh Baugh, United Way of Greater Atlanta*

*Robyn Bussey, Georgia Health Policy Center*

*Mike Carnathan, Atlanta Regional Commission*

*Dan Enger, Global Dialogues*

*Mary Wilson, Tri-Cities Stewardship Group*



## *Shifting Sands on the Same Beach*

Mike Carnathan  
mcarnathan@atlantaregional.com  
December, 2016

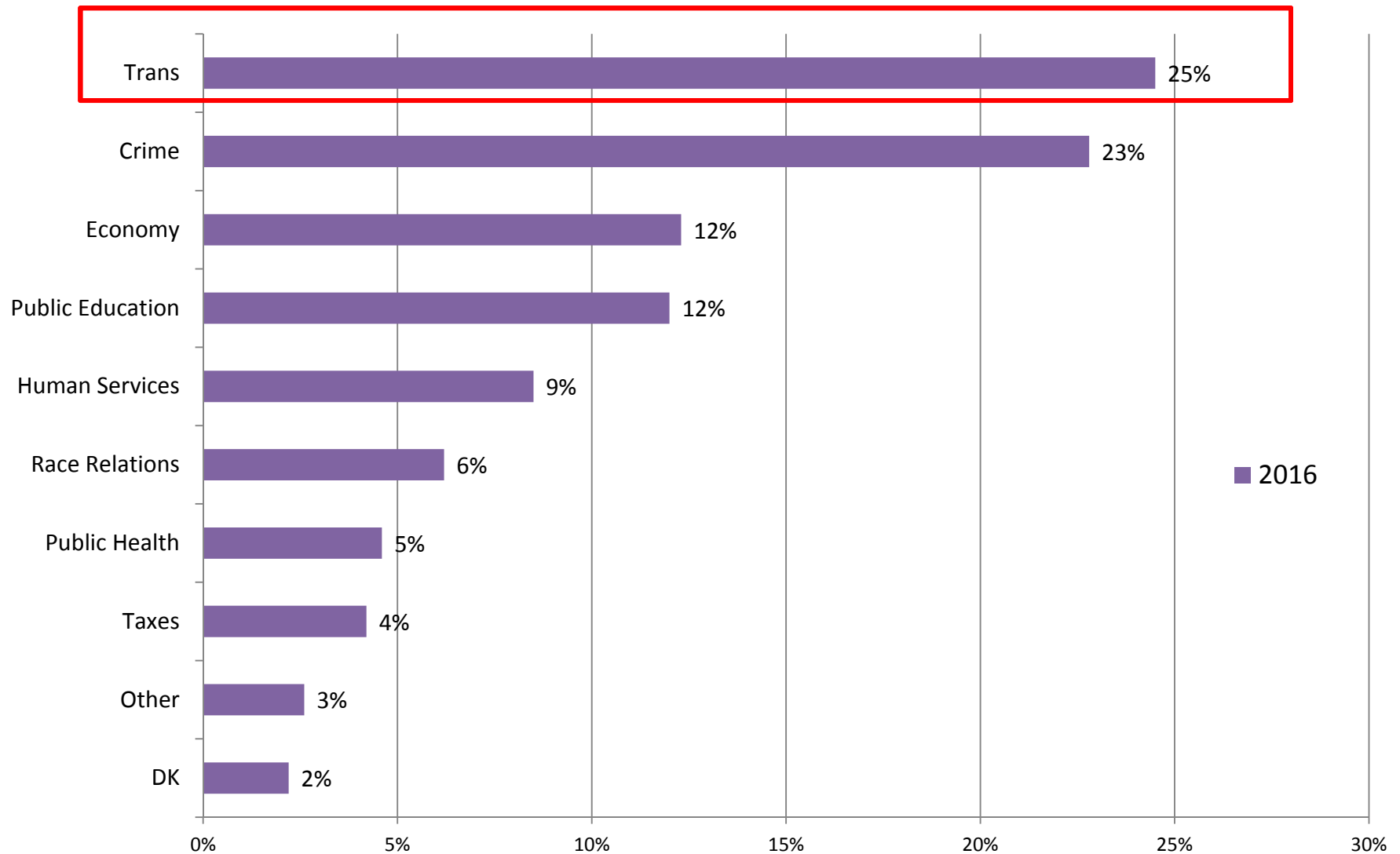
## 2016 Headlines

- **Transportation** stays the #1 concern
  - Transit support ticking up
- *Caveat:* Concern with **Crime** Rising...
  - BUT we feel safe in our own communities
- **Economy** is getting better and better
  - Was the #1 concern in 2013, now #4
- Optimism for **The Future** Remains
  - 1/3 See Things “Better next 3-4 years”



# ***TRANSPORTATION***

## Biggest Problem Facing Residents in Metro Atlanta: Responses - 2016



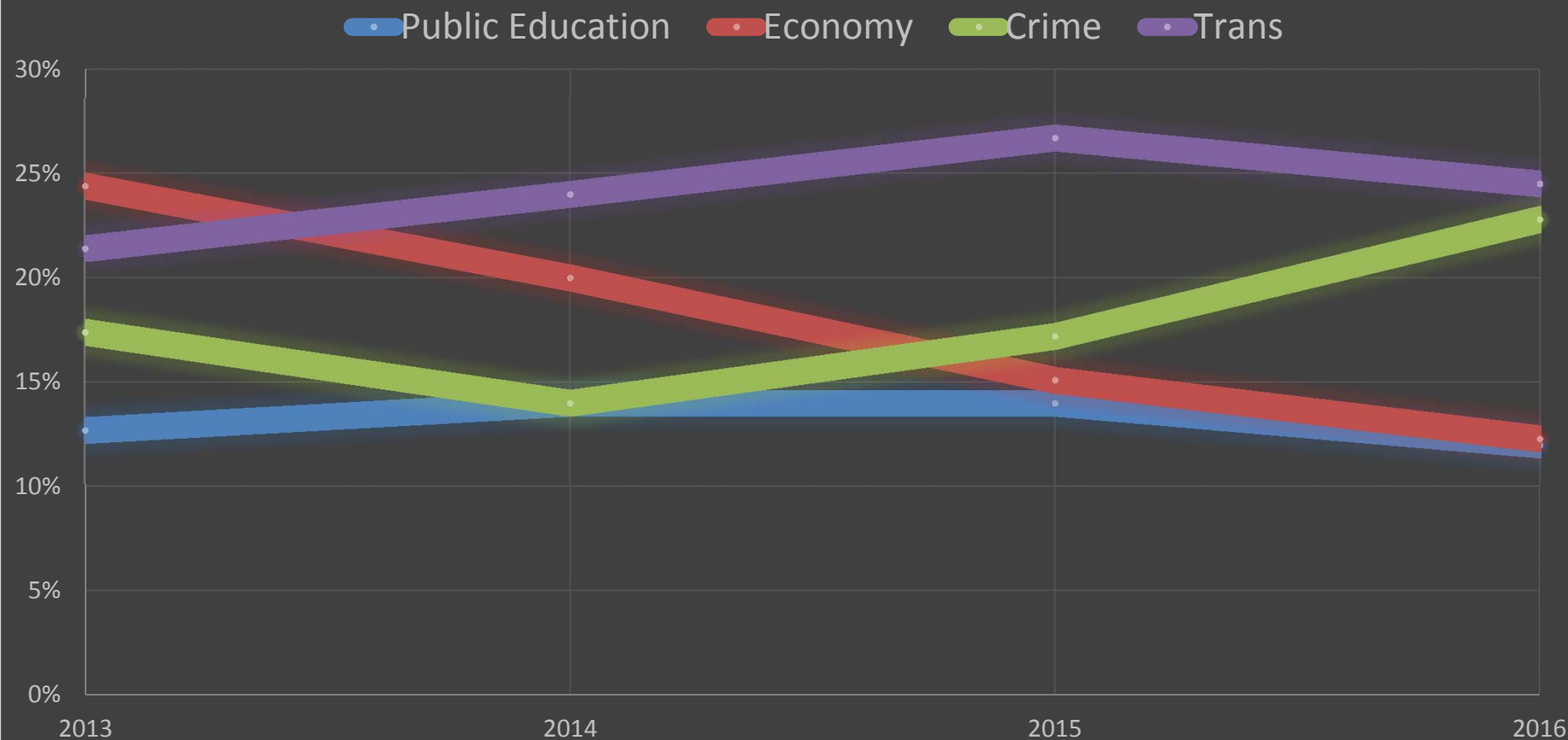
## Most Likely to Say that Transportation is the #1 Issue?

- Residents of Cherokee, Cobb or Gwinnett
- Those with at least a bachelor's degree
- Whites and Latinos
- Those with higher incomes
- Males



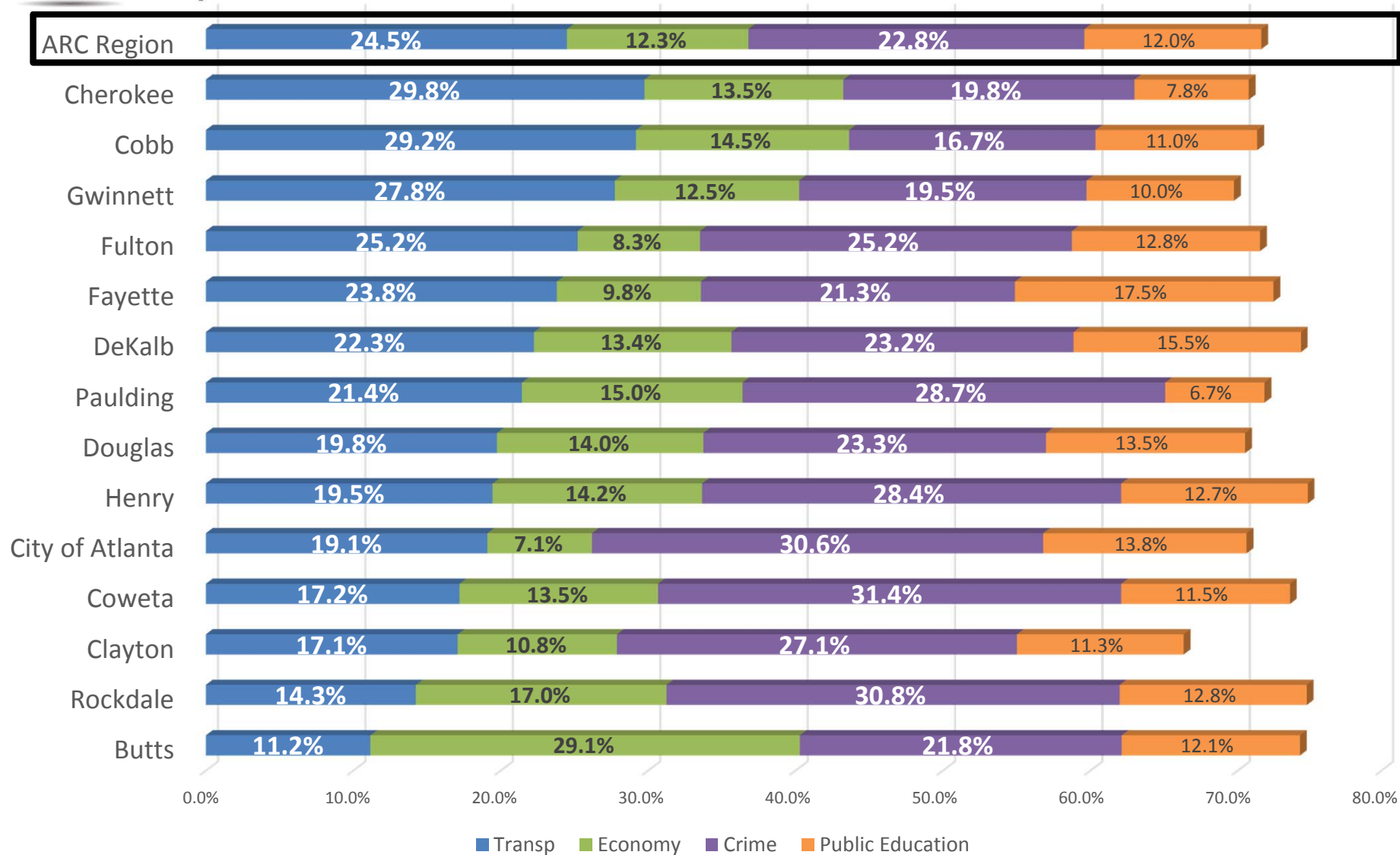
# Biggest Problem Facing Residents in Metro Atlanta: Responses – 2013-2016

Change in Perceptions of Biggest Problem 2013-2016

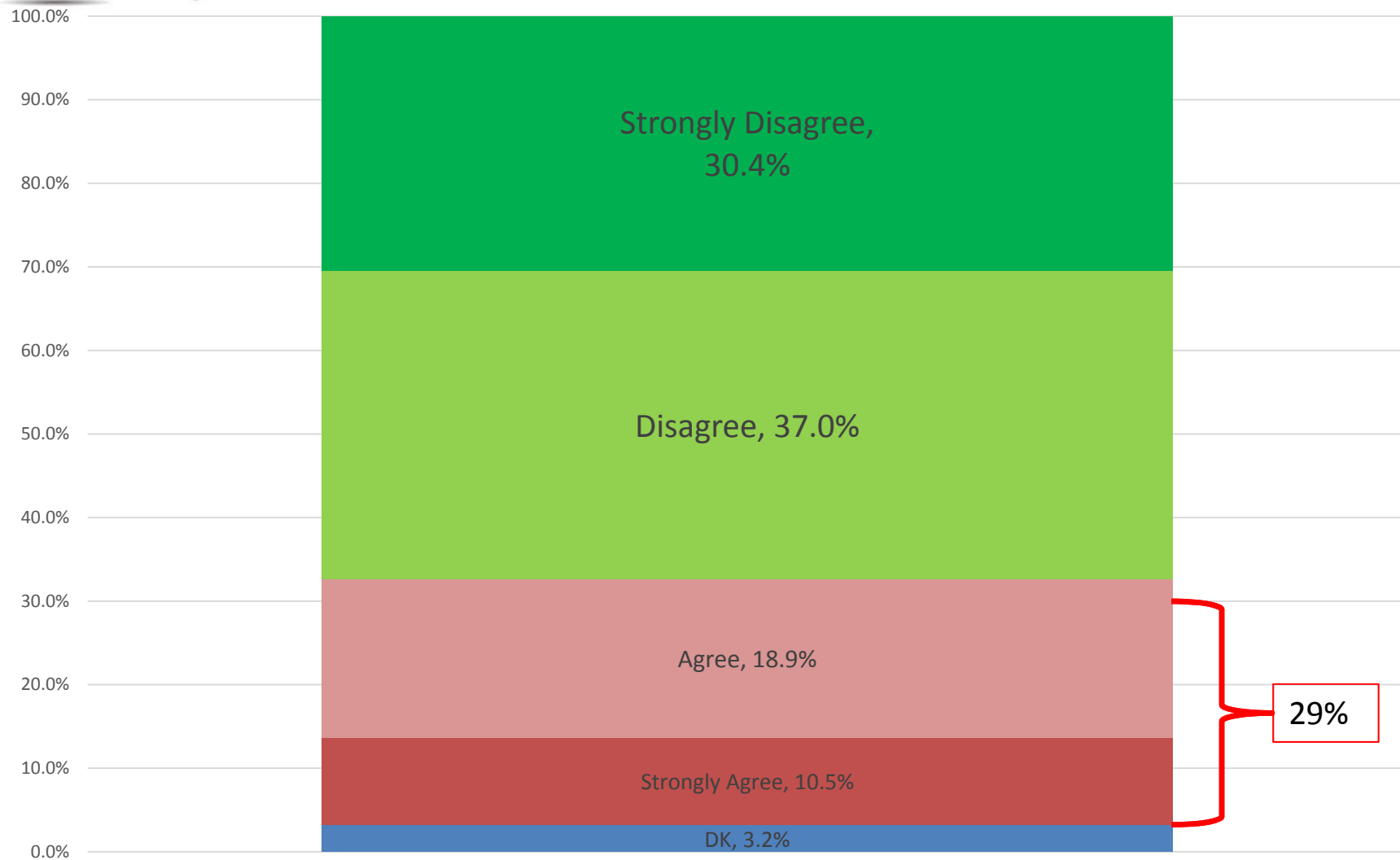




## Biggest Problem for Metro Atlanta: 2016



## "I Frequently Lack Transportation to Get to Places I Need to Go..."

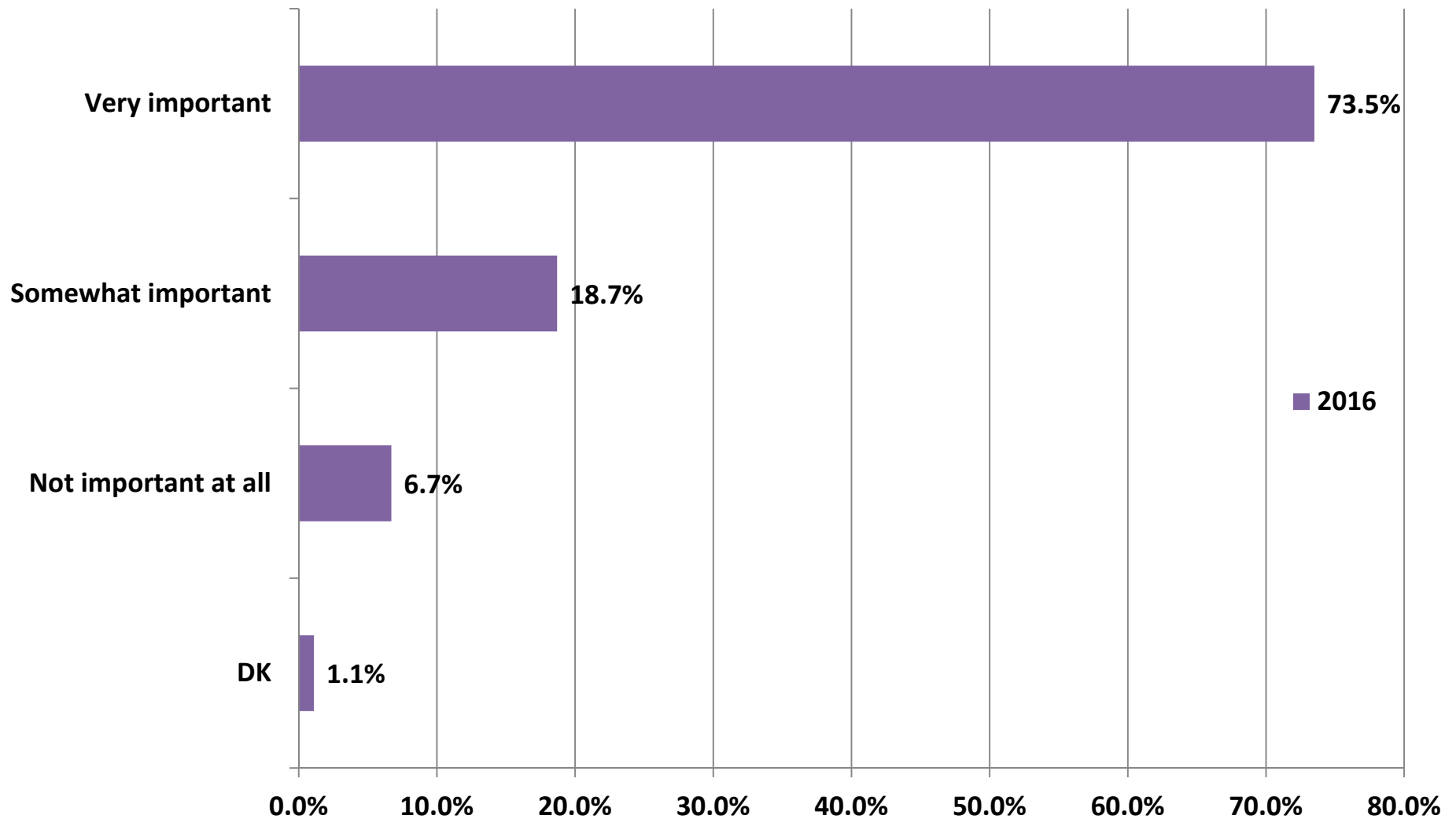


## Most Likely to Indicate Having Problems with Accessing Needed Transportation...

- Residents of Clayton, DeKalb and Rockdale
- Millennials and Seniors
- Those with the least amount of education
- Blacks and Latinos
- Those relatively new to the region

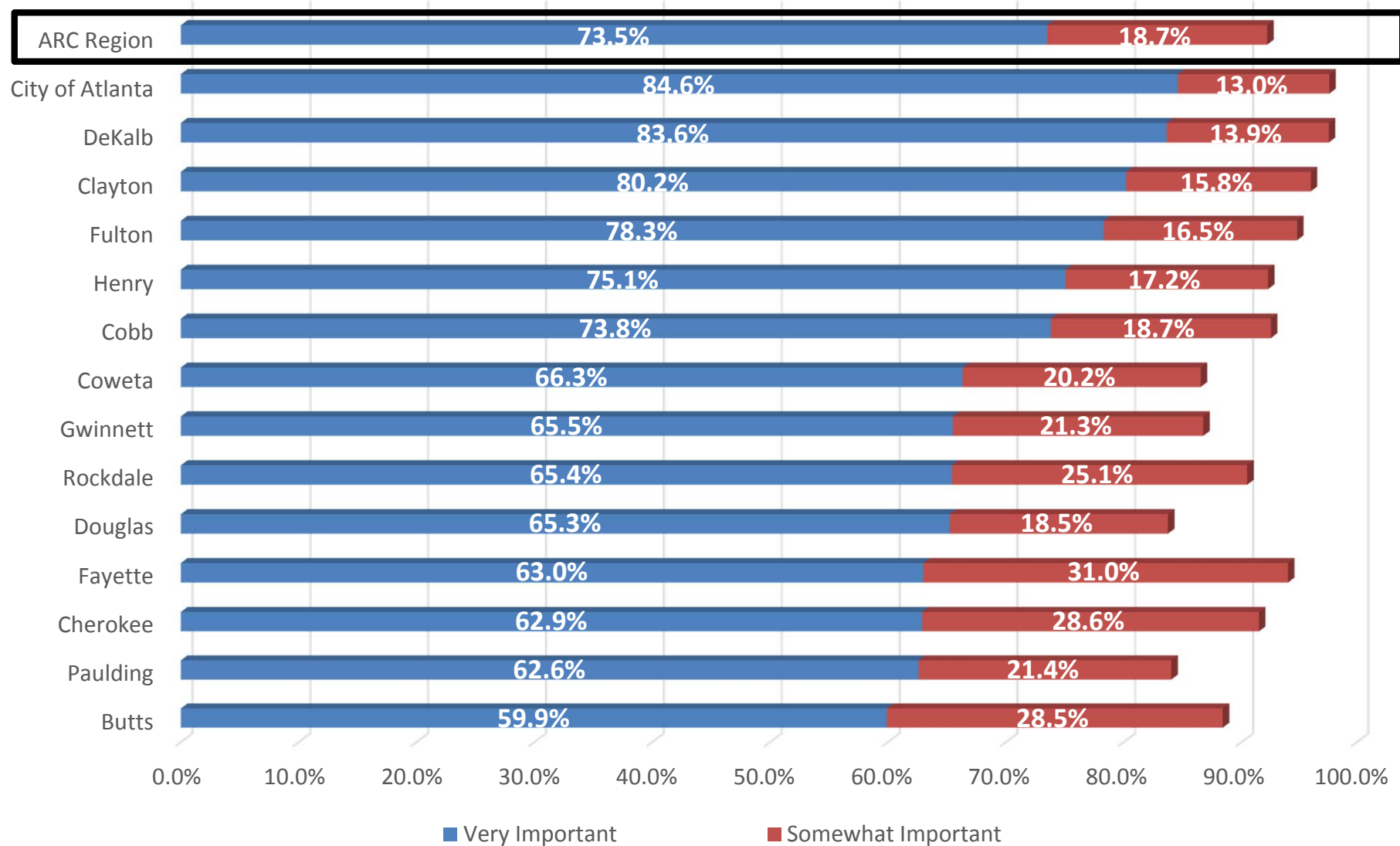


## Importance of Public Transit: Responses 2016

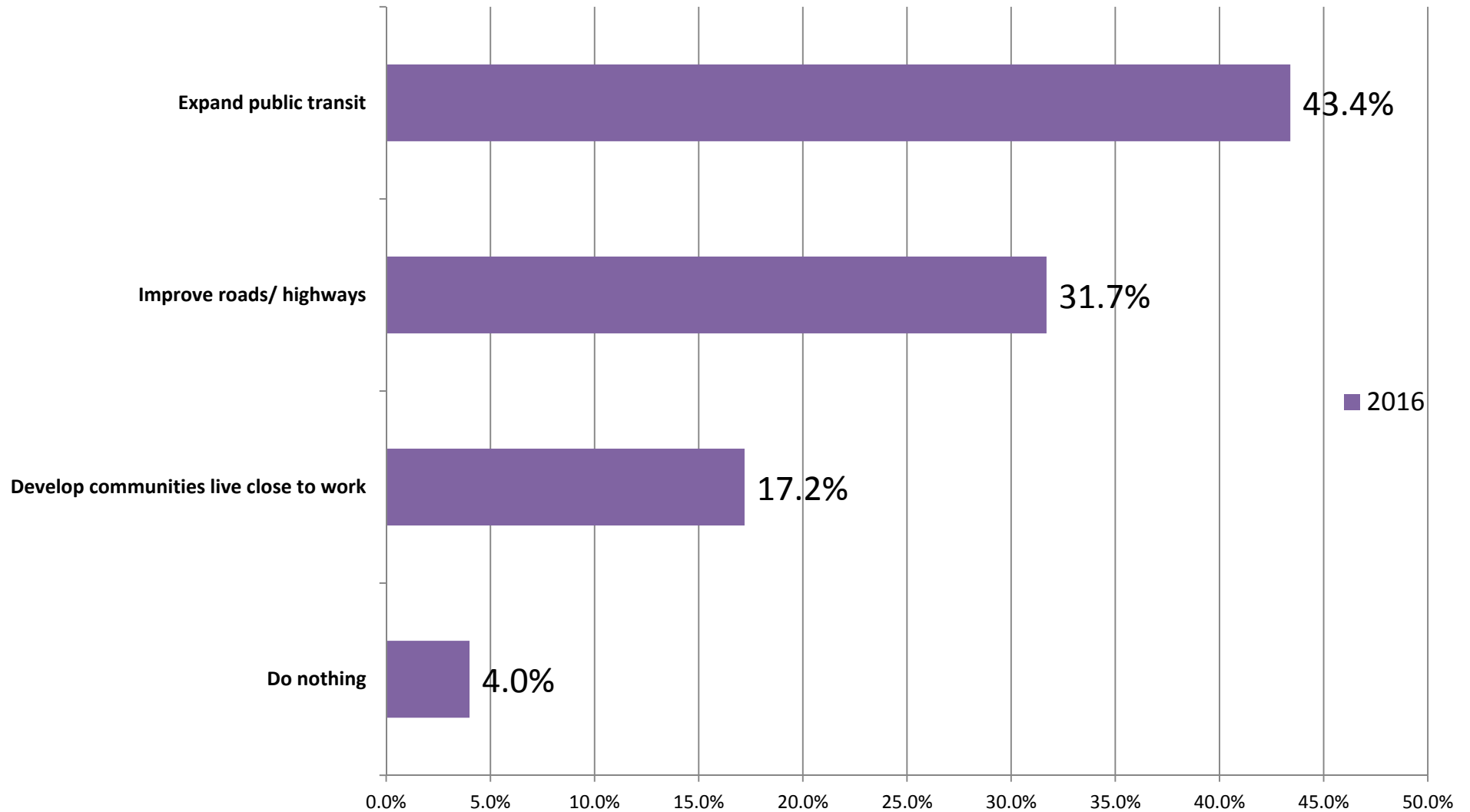




## Importance of Public Transit to the Region: 2016



## Best Way to Fix Traffic? Responses 2016

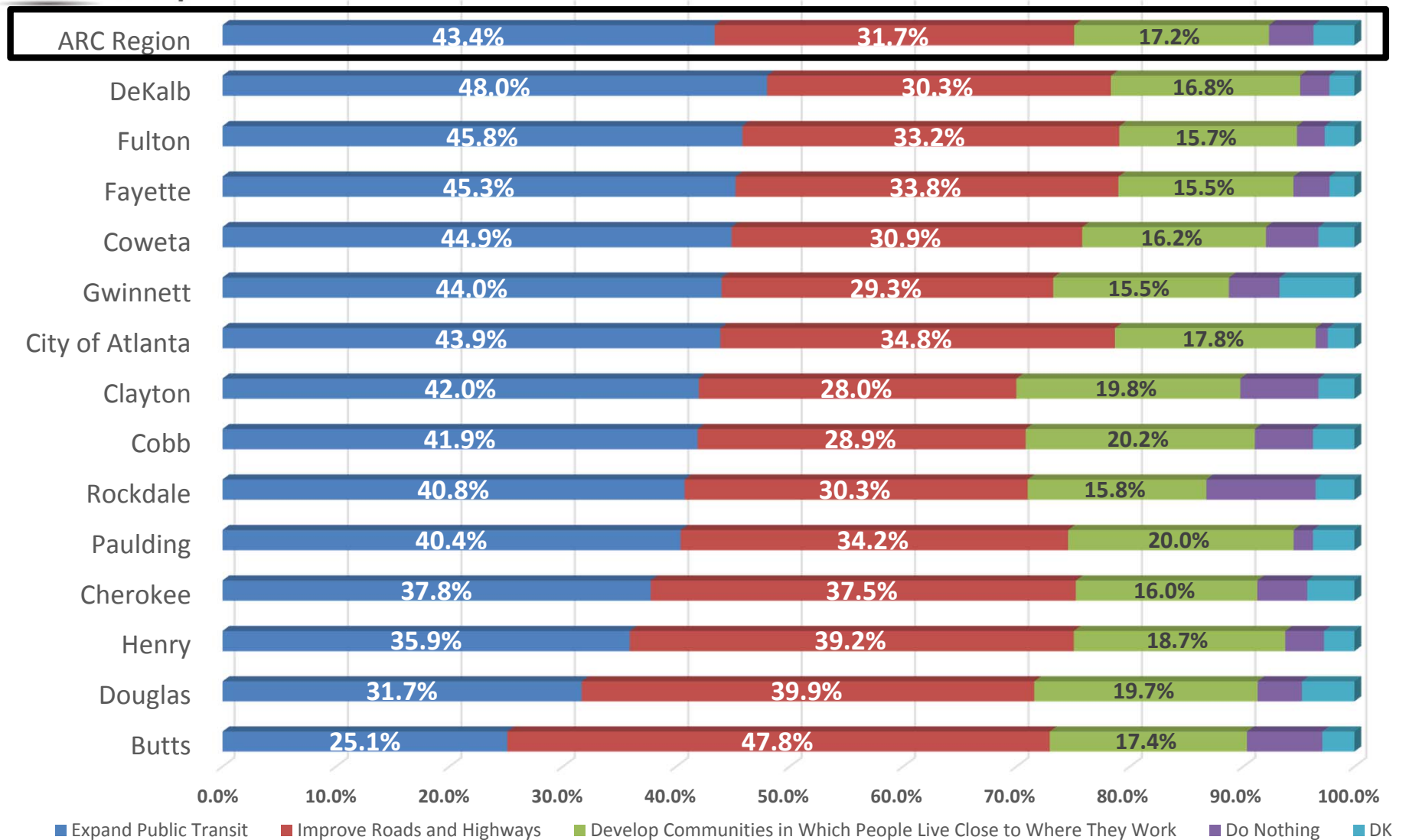


## Most Likely to Indicate “Expanding Public Transit” as the Best Long-Term Fix to Traffic Problems...

- Residents of DeKalb, Fulton and Fayette
- Those with at least a bachelor’s degree

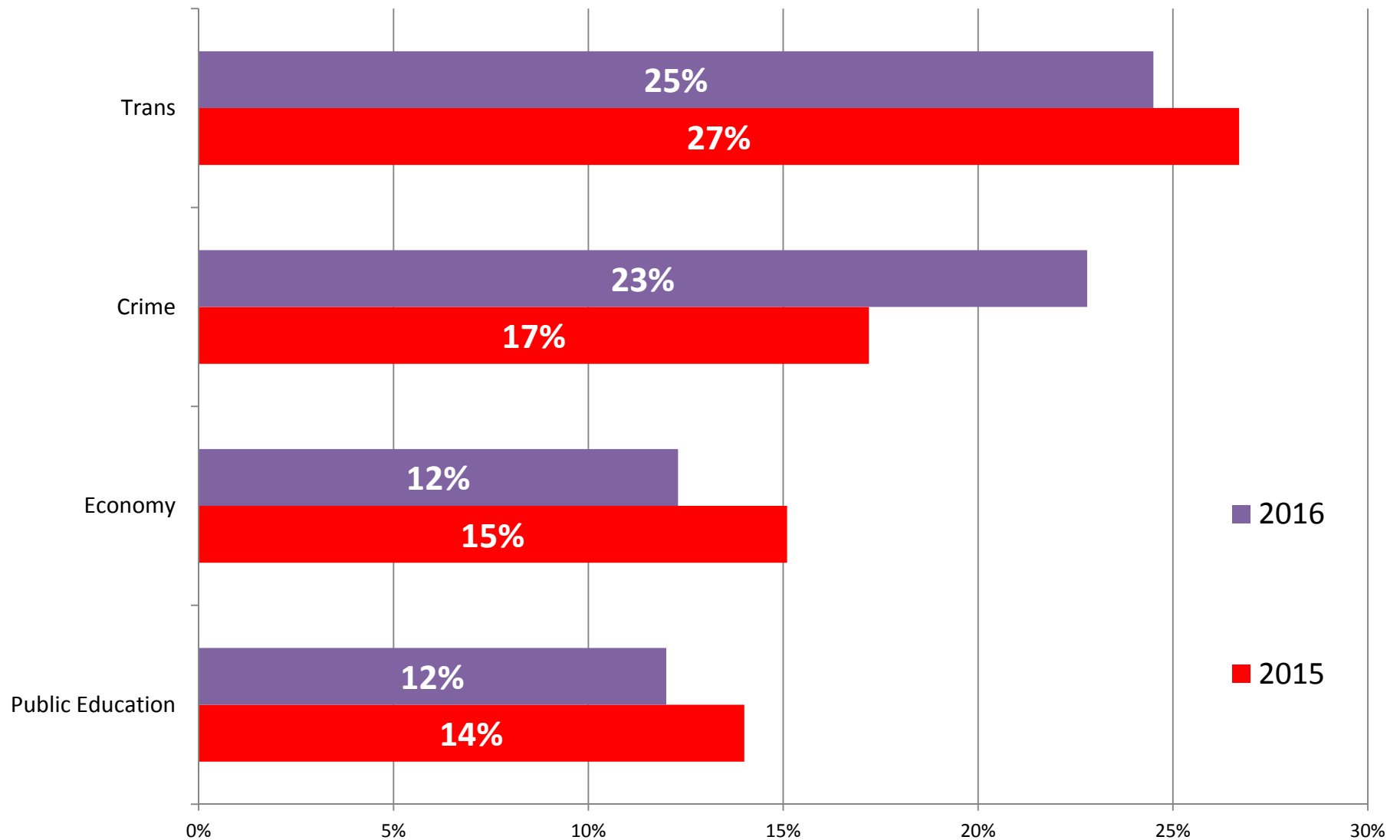


## Best Long-Term Solution to Traffic?: 2016



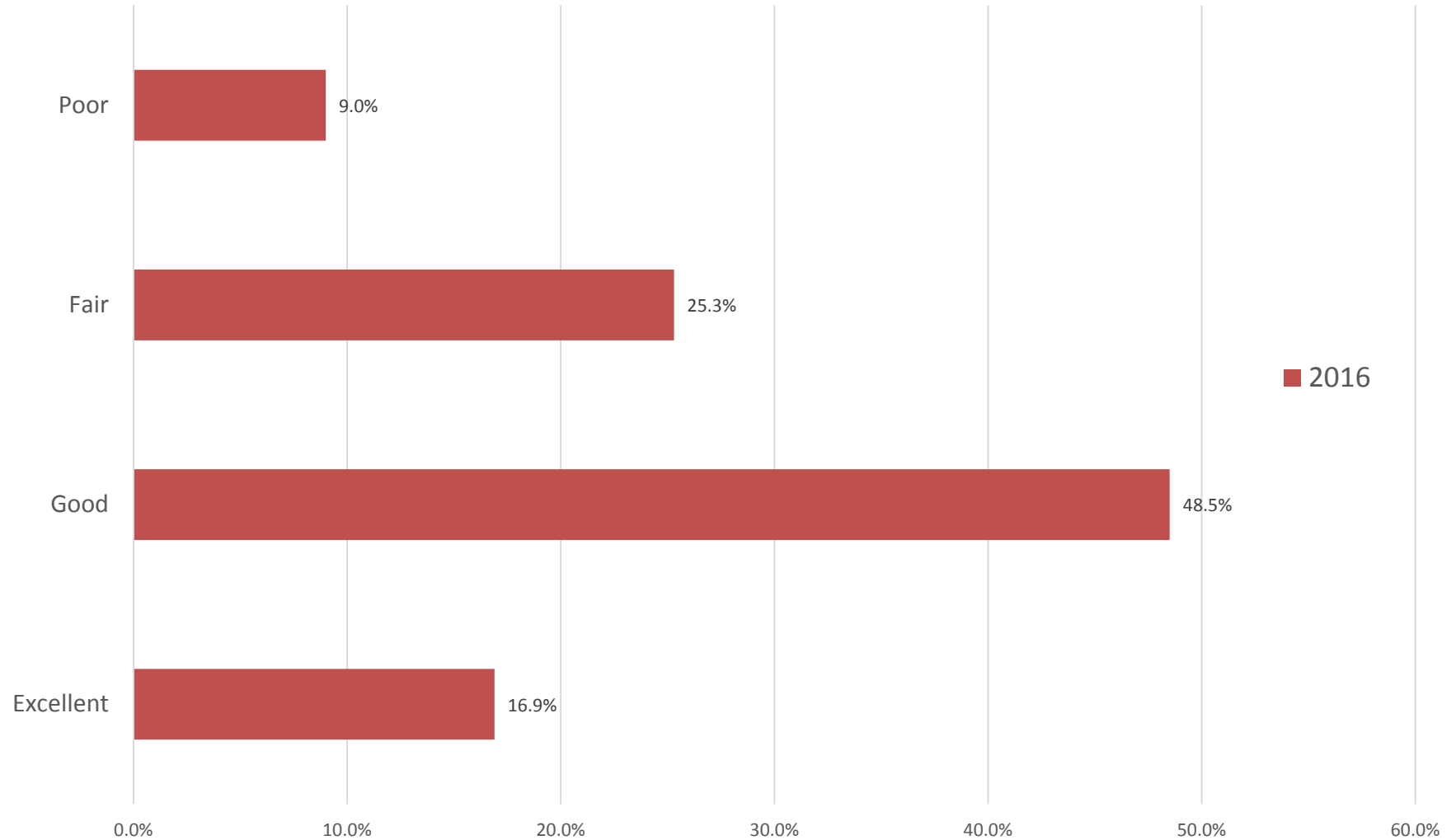
# *Crime*

## Biggest Problem Facing Residents in Metro Atlanta: Responses – 2015-2016





## Safety of Residents in Community: 2016

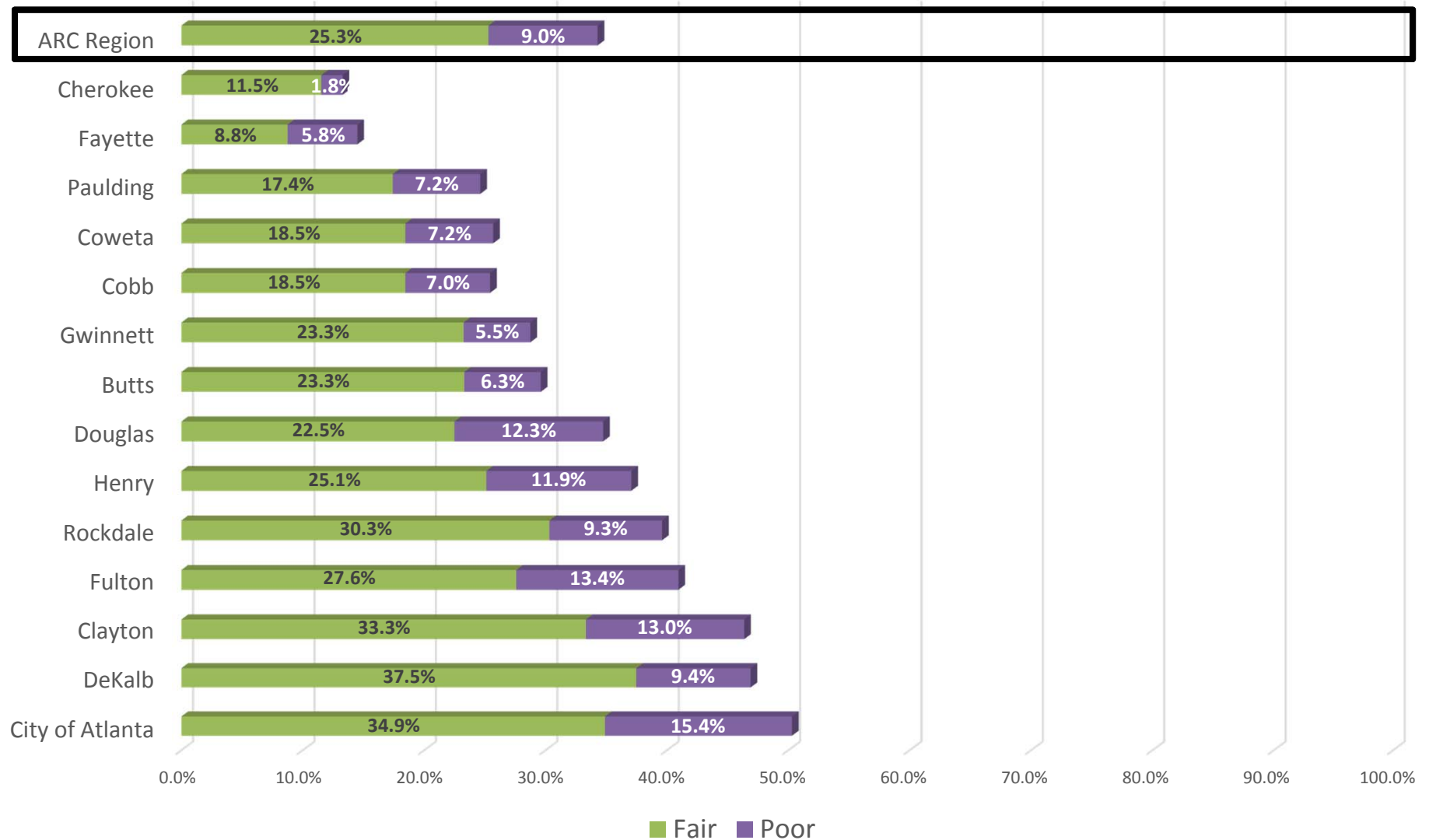


## Most Likely to Say that Crime is the #1 Issue?

- Residents of Coweta, Rockdale or City of Atlanta
- Seniors
- Those with the least amount of education
- Blacks
- Females
- Long-term residents

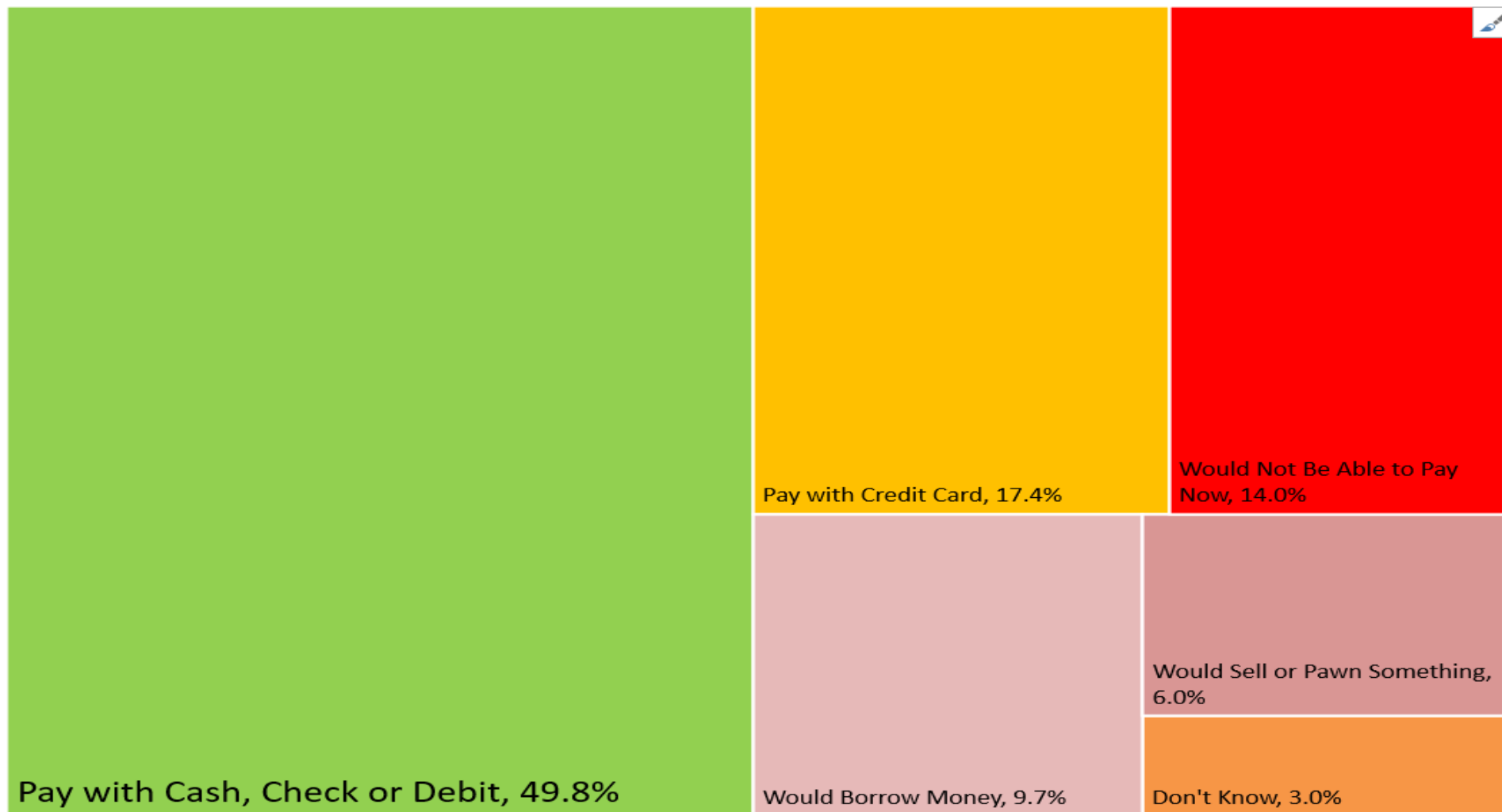


## Rate Resident Safety in your Community: 2016

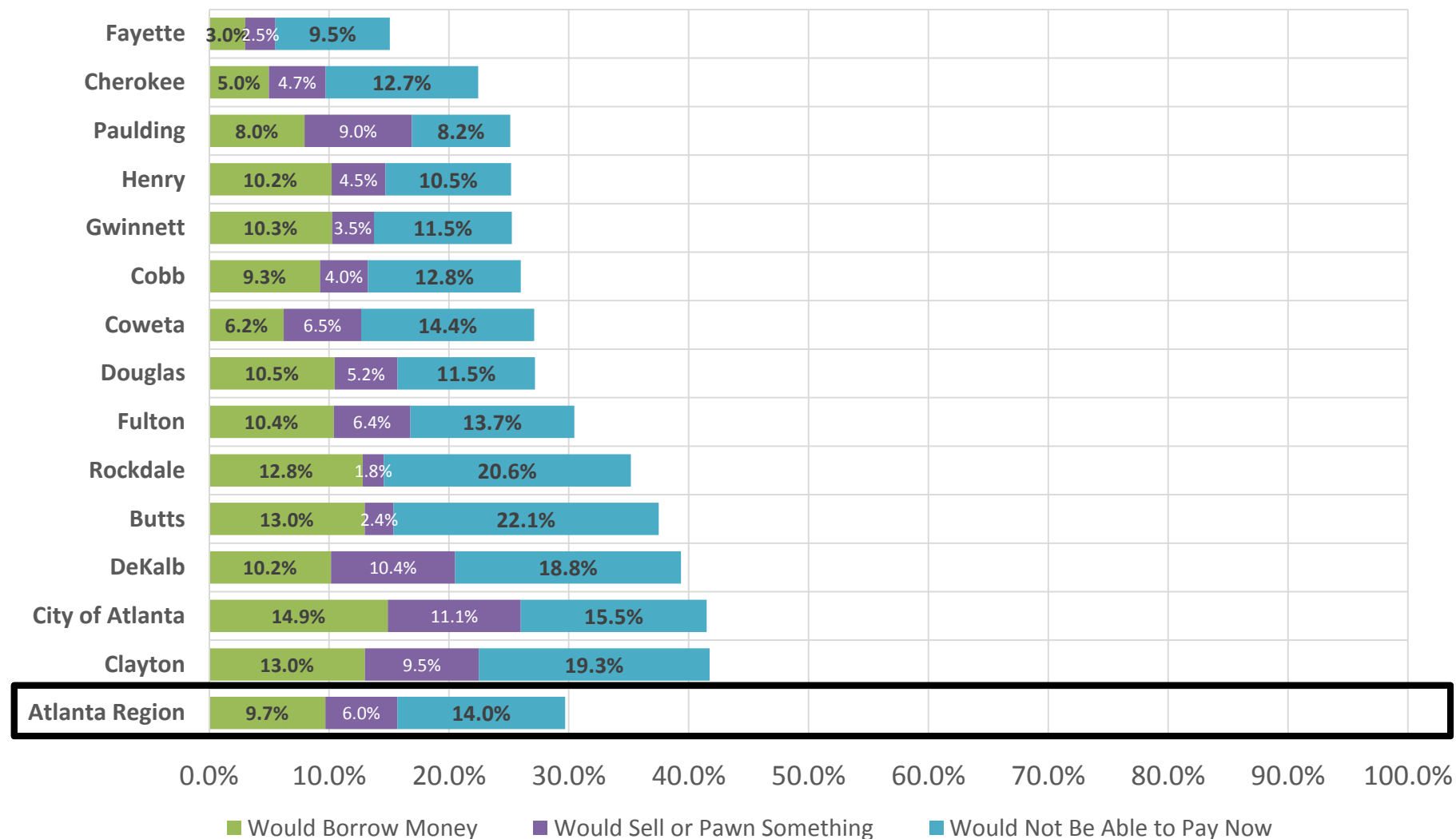


# ***ECONOMY***

## Methods of Paying for a \$400 Financial Emergency

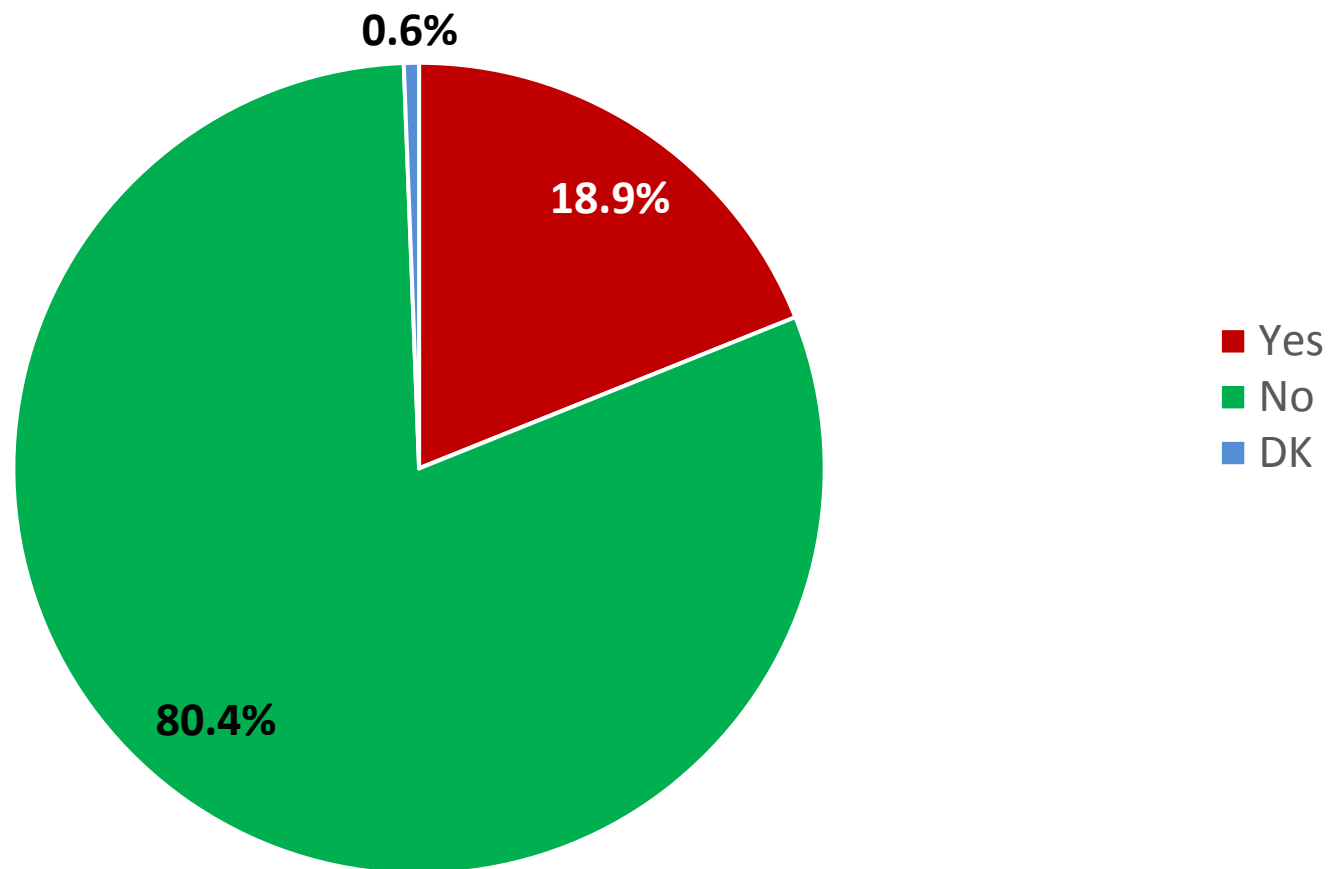


## Methods of Paying for a \$400 Financial Emergency, By County





## Skipped Meals or Reduced Portions re: Lack of Money

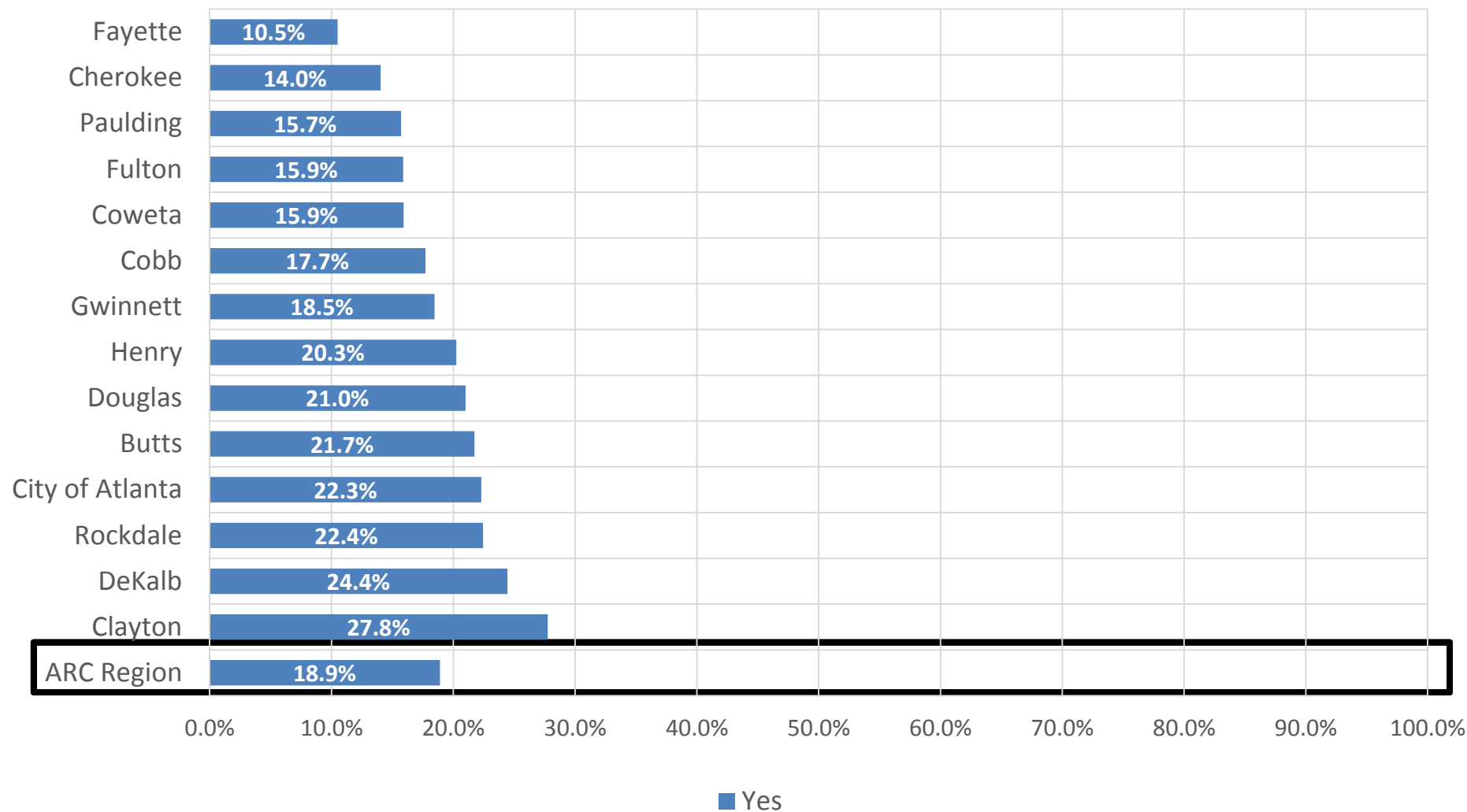


## Most Likely to Say that they skipped meals or reduced portions due to lack of money

- Residents of Clayton, DeKalb or Rockdale
- Millennials
- Those with the least amount of education
- Blacks
- Females
- Households with Children

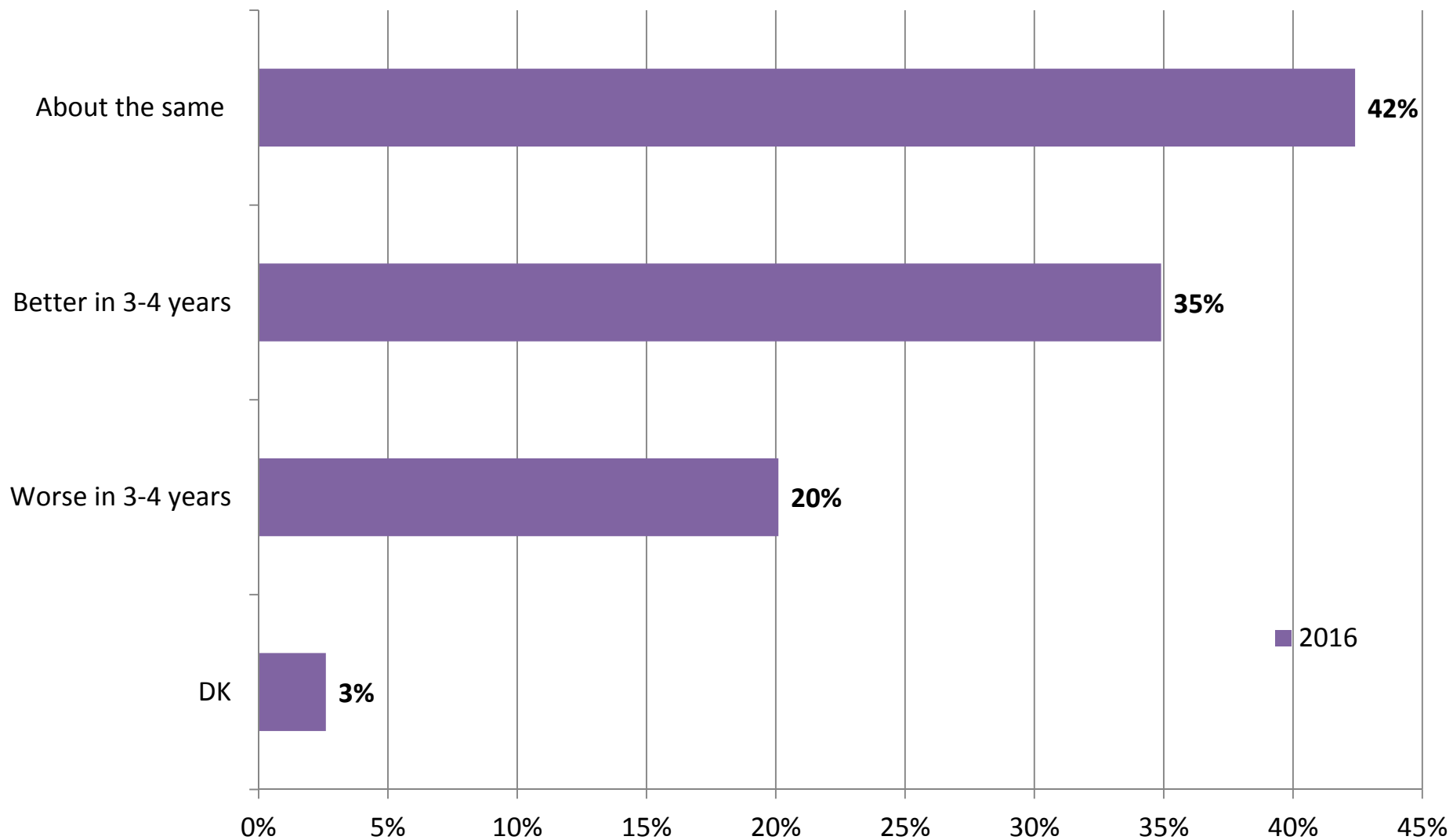


## Skipped Meals or Reduced Portions: 2016



# ***THE FUTURE?***

## Future Assessment of Living Conditions: Responses 2016



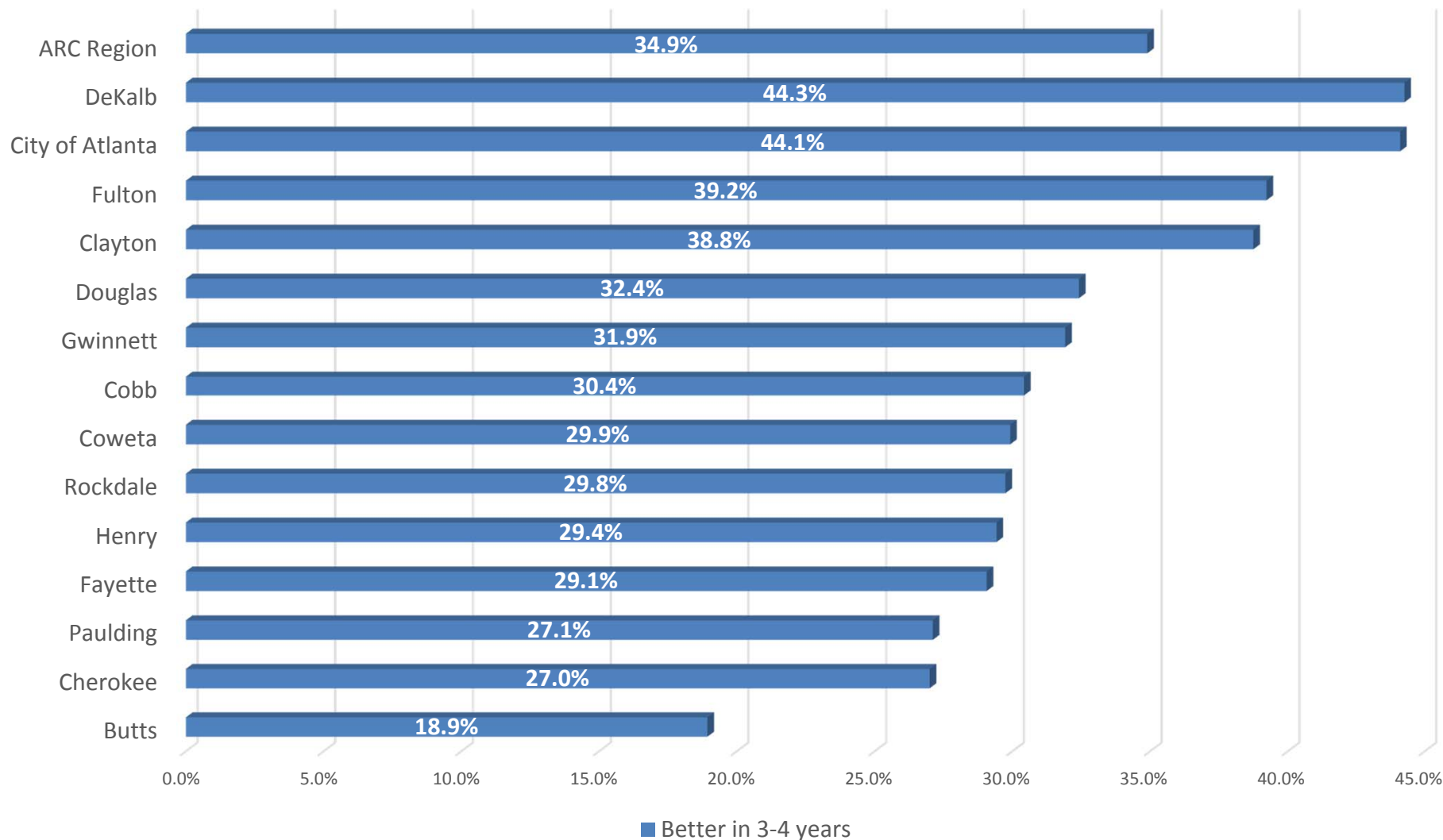
## Most Likely to Say that things will be better in 3-4 years

- Residents of DeKalb, Fulton or City of Atlanta
- Millennials
- Blacks and Latinos
- Those relatively new to the region





## Things in the Future Will Be... (by County): 2016



## For More Information

<http://www.atlantaregional.com/info-center/metro-atlanta-speaks>



ABOUT US INFO CENTER LAND USE ENVIRONMENT TRANSPORTATION LOCAL GOVERNMENT AGING RESOURCES WORKFORCE SOLUTIONS Search ARC GO

### Info Center

Overview

Forecasts

2010 Census

ARC Region

GIS Data and Maps

Interactive Mapping

2016 State of the Region Update

ARC Newsletters and Blogs

ARC Events

ARC Products

ARC Archives

Calendar

Metro Atlanta Speaks

[Home](#) | [Info Center](#) | [Metro Atlanta Speaks](#)

## Metro Atlanta Speaks



The Metro Atlanta Speaks (MAS) public opinion survey gives elected, business and community leaders the knowledge they need to understand residents' perceptions of the strengths and weaknesses of the Atlanta region. It seeks to assess residents' attitudes and opinions about key regional issues such as transportation, the economy, local and regional public education, regional and neighborhood quality of life, and aging. The MAS, inspired by the Houston area's long-running Kinder Survey, is now in its fourth year.

### 2016 Metro Atlanta Speaks Data Dashboard

2016 Metro Atlanta Speaks: 2016 Results



### Other information

- [Full Report](#) (PDF)
- [Short version - Summary Slides](#) (PDF)
- [Long version- all slides](#) (PDF)
- [List of questions](#) (PDF)



# **A TRI-CITIES STORY**

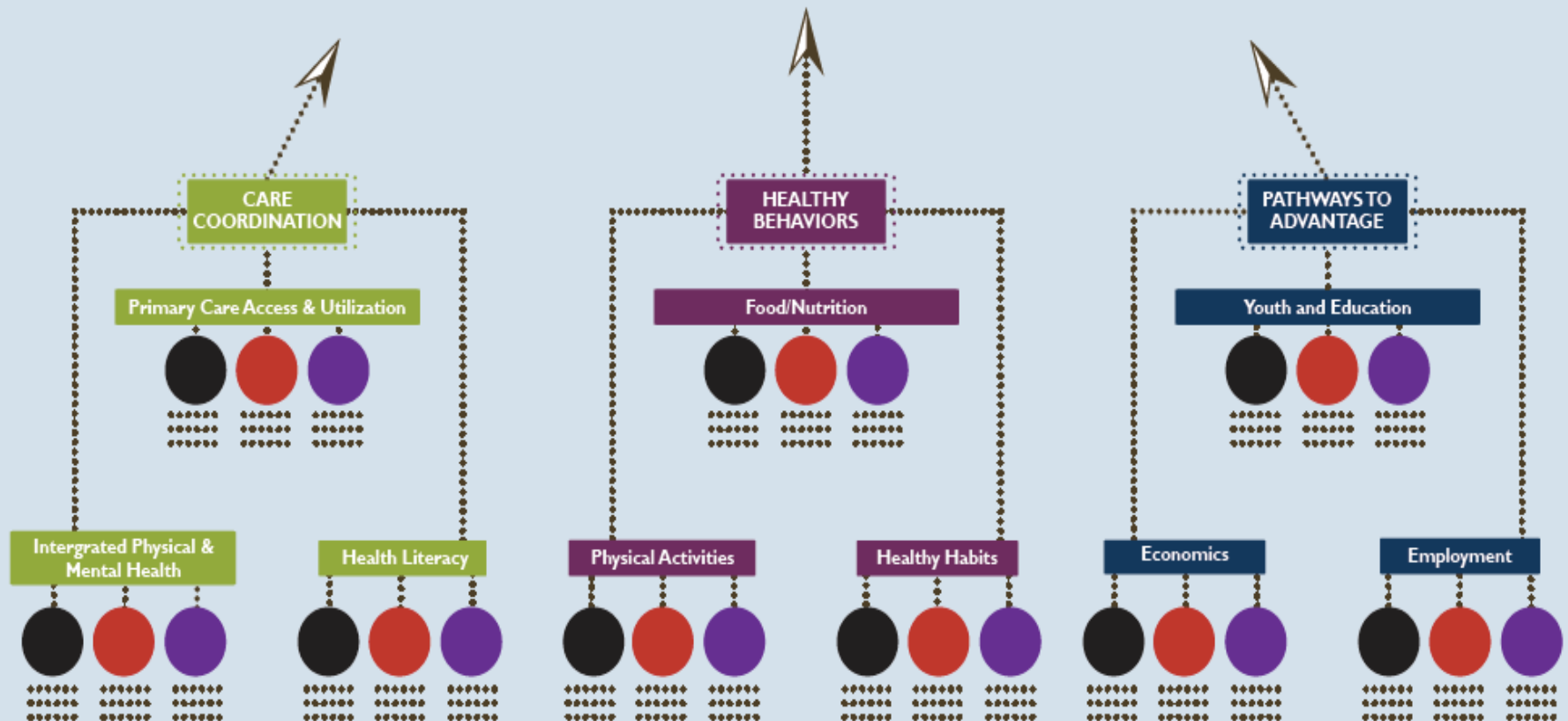
**Daniel Enger**  
**Executive Director, Global Dialogues**

KEY

- BANNER HS
- TRI-CITIES HS
- McCLARIN HS

# ARCHI TRI-CITIES COMMUNITY PLAN

TRI-CITIES RESIDENTS ARE HEALTHY, THRIVING, AND SUPPORTING A VIBRANT COMMUNITY.



# Panel Q&A



# Closing



*Karen Minyard, Georgia Health Policy Center*



# Partnership Agreement



# ARCHI Partners



- |  |  |  |
|--|--|--|
| ❧ American Cancer Society                        | ❧ Evonne Yancey  | ❧ Partnership for Southern Equity                    |
| ❧ Annie E. Casey Foundation- Get Georgia Reading | ❧ Fulton County Government   | ❧ Paul Stange  |
| ❧ Alliant GMCF                                   | ❧ Friends of Refugees  | ❧ Perkins & Will                                     |
| ❧ Atlanta Community Food Bank                    | ❧ Georgia Alliance for Health Literacy   | ❧ Piedmont Healthcare                                |
| ❧ Atlanta Neighborhood Development Partnership   | ❧ Georgia Center for Nonprofits  | ❧ RiteAid Pharmacy                                   |
| ❧ Atlanta Regional Commission                    | ❧ Georgia Department of Public Health  | ❧ Saint Joseph's Health System                       |
| ❧ Atlanta Volunteer Lawyers Foundation           | ❧ Georgia Health Policy Center   | ❧ Saving Our Sons & Sisters International            |
| ❧ Cathie Berger                                  | ❧ Georgia State University   | ❧ South Fulton Human Services Coalition              |
| ❧ Charitable Connections                         | ❧ Georgia Institute of Technology  | ❧ Southside Medical Center                           |
| ❧ ChildKind                                      | ❧ Global Dialogues   | ❧ TechBridge   |
| ❧ CHRIS Kids, Inc.                               | ❧ Gordon Meredith  | ❧ The Arthur M. Blank Family Foundation              |
| ❧ Civic League of Atlanta                        | ❧ Grady Health System  | ❧ The Carter Center                                  |
| ❧ Clayton State University                       | ❧ Gwen Smith   | ❧ The Common Market Georgia                          |
| ❧ Club E. Atlanta                                | ❧ Health Equity Advocacy & Resource Center   | ❧ The Community Foundation for Greater Atlanta, Inc. |
| ❧ Community Health Interfaith Partners           | ❧ Historic Westside Gardens Atlanta, Inc.  | ❧ Truly Living Well                                  |
| ❧ Community of College Park                      | ❧ Insure Georgia   | ❧ United Way of Greater Atlanta                      |
| ❧ Concerned Black Clergy                         | ❧ Kaiser Permanente of Georgia   | ❧ Veterans Empowerment Organization                  |
| ❧ DeKalb County Board of Health                  | ❧ Legacy Community Housing, GreenSHADES Foundation                                     | ❧ Voices of Georgia's Children                       |
| ❧ DeKalb County Government                       | ❧ Live Living International Foundation   | ❧ Wellstar Atlanta Medical Center                    |
| ❧ Diabetes Community Action Coalition, Inc.      | ❧ Marcus Autism Center/Children's Healthcare of Atlanta/Emory Department of Pediatrics | ❧ Downtown and South                                 |
| ❧ Emory Healthcare                               | ❧ Metro Atlanta Urban Farm   | ❧ West End Medical Center Inc.                       |
| ❧ Emory University - Urban Health Program        | ❧ Metropolitan Counseling  |  |
| ❧ Emory University- Fuqua Center                 | ❧ Muni Cares, Inc.   |  |
| ❧ Emory Urban Health Initiative                  | ❧ Odyssey Family Counseling Center   |  |
| ❧ Enterprise Community Partners                  | ❧ One Talent Inc.  |  |
| ❧ Erica Edmond                                   | ❧ Open Hand Atlanta  |  |

# 2017 Quarterly Breakfasts



March 15<sup>th</sup>

June 21<sup>st</sup>

September 13<sup>th</sup>

December 6<sup>th</sup>

# ARCHI



December 7, 2016

Atlanta Regional Collaborative for Health Improvement

*Joining Forces to Improve Health Outcomes in Metro Atlanta*